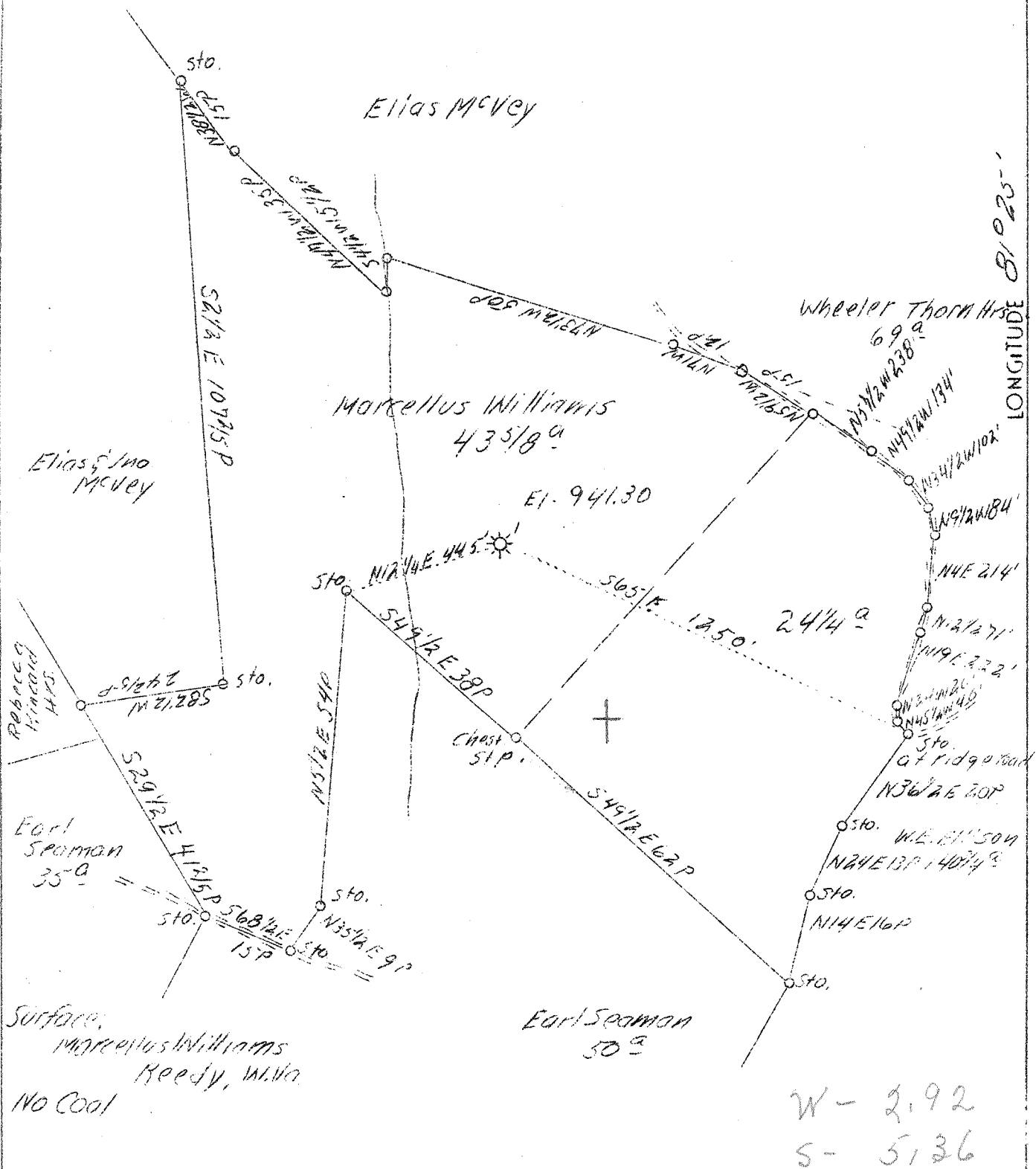


LATITUDE 39° 00'

LONGITUDE 81° 25'



A.B.D.

Company	South Penn Oil Co.
Address	411 7th Ave. Pittsburgh, Pa.
Farm	Marcellus Williams
Acres	69
Lease No.	79709
Well (Farm) No.	1
El. (S.L.)	941.30
Quadrangle	Spencer NE
County	Roano
District	Roody
Eng.	E.C. Tablor
Date	8/1/39
Scale	1" = 400'

STATE OF WEST VIRGINIA
 Department of Mines
 OIL AND GAS DIVISION
 Charleston

WELL LOCATION MAP
 File No. RC-236-A

x Denotes location of well on U.S. Topographic Maps, scale 1 to 62,500, latitude and longitude lines being represented by border lines as shown.

- Denotes one inch spaces on border line of original tracing.

Ready District, Boone County, W. Va. 203A
 By South Penn Oil Co., 131 Seventh Ave., Pittsburgh, Pa.
 Abandoned under permit No.-1.
 In 6 acres.
 Elevation, 941.70' L.
 Surface and minerals owned by Herschel Williams, Ready, W. Va.
 Drilling commenced Oct. 13, 1926; completed, Nov. 13, 1926.
 Open flow, 250,700 cu. ft.
 10" casing, 248' (pulled); 8", 1234' (pulled); 6", 2135'.
 Steel shoe on 6" casing.
 Gas well. Abandonment reported to Dept. of Mines August 14, 1939.
 Record to 202 from Div. Oilfield August 24, 1939.

	Top.	Bottom.
1st Pittsburgh Sand	67	74
2nd Pittsburgh Sand	83	87
Little Duckard Sand	100	110
Big Duckard Sand	117	130
Salt Sand	167	196
Big lime	206	207
Big Injun Sand	207	210
Sand	210	212
Slate and shells	212	215
Brown shale	215	217
Brown Sand (gas, 2512-2521')	217	2521
Blue lime	2521	2522
Total depth		2522

STATE OF WEST VIRGINIA
DEPARTMENT OF MINES
OIL AND GAS DIVISION

214

WELL RECORD

Permit No. AAA-286-A

Oil or Gas Well GAS
(Kind)

Company South Penn Oil Company
 Address 411 Seventh Ave., Pittsburgh, Pa.
 Farm Marcellus Williams Acres 69
 Location (waters) -----
 Well No. 1 Elev. 941.30'
 District Reedy County Roane
 The surface of tract is owned in fee by Marcellus Williams
 Address Reedy, W. Va.
 Mineral rights are owned by M. Williams
 Address Reedy, W. Va.
 Drilling commenced Oct. 13, 1926
 Drilling completed Nov. 19, 1926
 Date shot --- Depth of shot ---
 Open Flow --- /10ths Water in --- Inch
--- /10ths Merc. in --- Inch
 Volume 998,790 Cu. Ft.
 Rock Pressure --- lbs. --- hrs.
 Oil --- bbls., 1st 24 hrs.
 Fresh water --- feet --- feet
 Salt water --- feet --- feet

Casing and Tubing	Used in Drilling	Left in Well	Packers
Size			
16			Kind of Packer
13			<u>Steel shoe</u>
10	<u>948 (Pulled)</u>		<u>on 6-5/8" csg</u>
8 1/4	<u>1234 (Pulled)</u>		Size of
6 5/8	<u>2135</u>		Depth set <u>---</u>
5 3/16			Perf. top <u>---</u>
3			Perf. bottom <u>---</u>
2			Perf. top <u>---</u>
Liners Used			Perf. bottom <u>---</u>

CASING CEMENTED --- SIZE --- No. Ft. --- Date ---
 COAL WAS ENCOUNTERED AT --- FEET --- INCHES
--- FEET --- INCHES --- FEET --- INCHES
--- FEET --- INCHES --- FEET --- INCHES

Formation	Color	Hard or Soft	Top	Bottom	Oil, Gas or Water	Depth Found	Remarks
1st Pgh.			671	734			
2nd Pgh.			823	834			
Little Dunkard Sand			1090	1102			
Big Dunkard Sand			1179	1325			
Salt Sand			1839	1956			
Big Lime			2048	2078			
Big Injun Sand			2078	2104			
Sand			2109	2128			
Slate & Shells			2128	2495			
Brown Shale			2495	2507			
Berea Sand			2507	2521			
					<u>Gas</u>	<u>2512-2521</u>	
Blue Lime			2521	2522			
Total Depth				2522			

2078
207
11/37

