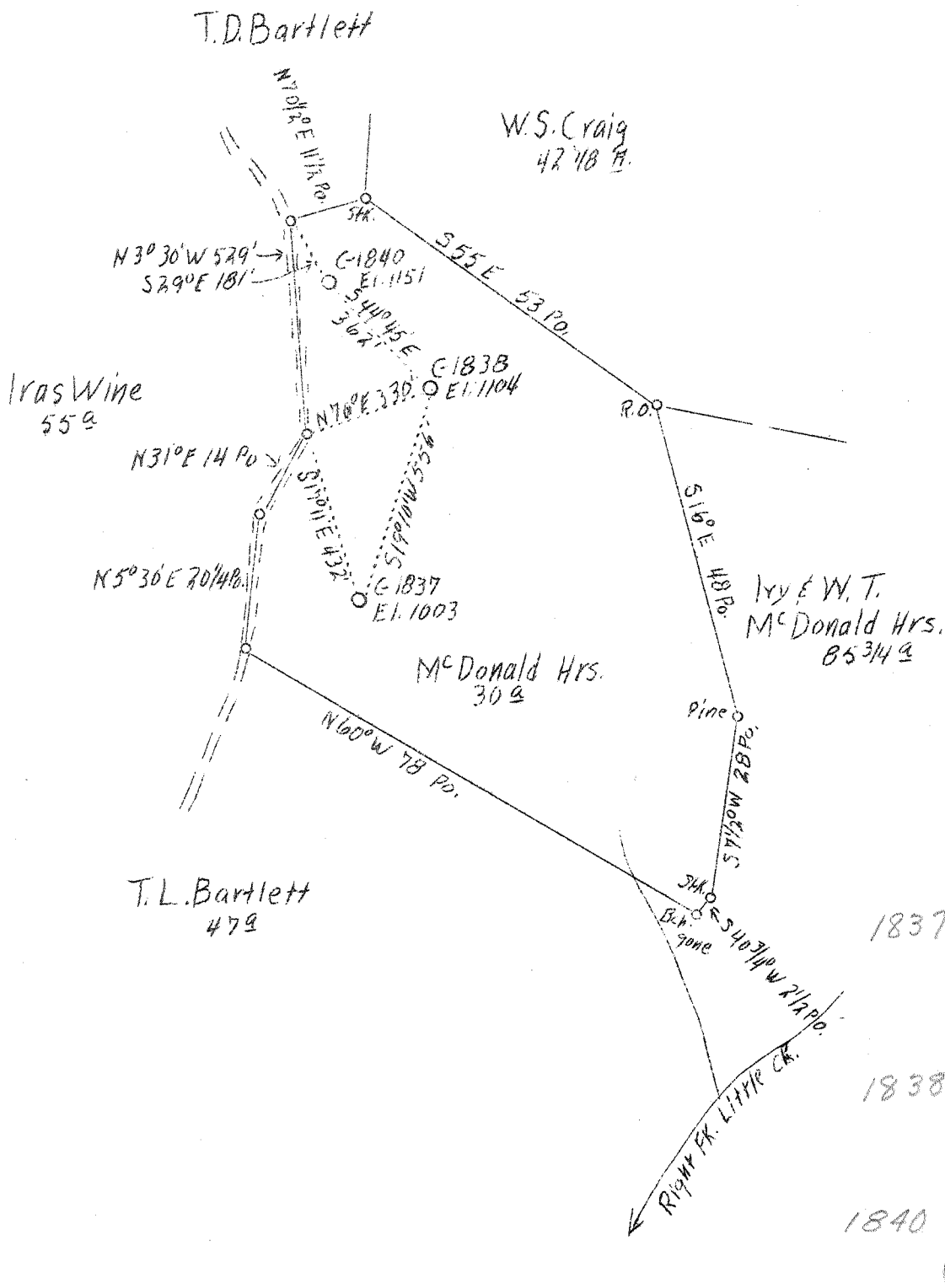


1840  
# 1838  
1837

LATITUDE 38° 50'

LONGITUDE 81° 15'



1837 { W. 3.41  
          { S. .11  
1838 { W. 3.38  
          { S. .06  
1840 { W. 3.48  
          { S. .03

A.B.D. C-1837-1838-1840

FB. 66B P 23-24 542-W40 54 4/151

Company Hope Const. & Refining Co.  
 Address Clarksburg, W. Va.  
 Farm McDonald Hrs.  
 Acres 30  
 Lease No. 5936  
 Well (Farm) No. 1, 2 and 4  
 Serial No. C-1837, C-1838 and C-1840  
 Elevation See Above  
 Quadrangle Spencer  
 County Roane  
 District Spencer  
 Engineer W. M. Bowers  
 Eng. Reg. No. 900  
 Date Dec. 5, 1938  
 Scale 1" = 400'

STATE OF WEST VIRGINIA  
 Department of Mines  
 OIL & GAS DIVISION  
 Charleston

WELL LOCATION MAP

File No. Rob-225-226-227-A

x Denotes location of well on U. S. Topographic Maps, scale 1 to 62,500, latitude and longitude lines being represented by border lines as shown.

- Denotes one inch spaces on border line of original tracing.

WEST VIRGINIA DEPARTMENT OF MINES  
OIL AND GAS DIVISION

206

WELL RECORD

Permit No. 225 A

Oil or Gas Well Oil  
(Kind)

Company Hope Construction & Refining Company  
Address Clarksburg, W. Va.  
Farm McDonald Heirs Acres 30  
Location (waters).....  
Well No. 1837 Elev. 1003  
District Spencer County Roane  
The surface of tract is owned in fee by Chas. H. McDonald  
Address Tripllett, W. Va.  
Mineral rights are owned by.....  
Address.....  
Drilling commenced 7-22-1916  
Drilling completed 10-13-1916  
Date shot 2-21-1917 Depth of shot Injun  
Open Flow /10ths Water in..... Inch  
/10ths Merc. in..... Inch  
Volume..... Cu. Ft.  
Rock Pressure..... lbs..... hrs.  
Oil..... bbls., 1st 24 hrs.  
Fresh water None recorded feet..... feet  
Salt water 1785 feet..... feet

Casing and Tubing	Used in Drilling	Left in Well	Packers
Size			Kind of Packer.....
16.....			
13.....			
10.....	895	Pulled	Size of.....
8 1/2.....	1265	Pulled	
6 5/8.....	2105	2105	Depth set.....
5 3/16.....			
3.....			Perf. top.....
2.....	2169	2169	Perf. bottom.....
Liners Used.....			Perf. top.....
			Perf. bottom.....

CASING CEMENTED..... SIZE..... No. FT..... Date  
Not cemented  
COAL WAS ENCOUNTERED AT..... FEET..... INCHES  
..... FEET No coal INCHES..... FEET..... INCHES  
..... FEET..... INCHES..... FEET..... INCHES

Formation	Color	Hard or Soft	Top	Bottom	Oil Gas or Water	Depth Found	Remarks
Red Rock	<i>Cave</i>		560	1130			
Cow Run Sand			1130	1215			
First Salt Sand			1310	1455			
Second Salt Sand			1485	1550			
Third Salt Sand			1740	1960	Water	1785	Salt
Little Lime			1994	2006			
Pencil Cave			2006	2010			
Big Lime			2010	2117			
Big Injun Sand			2117	2174	Oil	2148	
Total Depth				2179			

