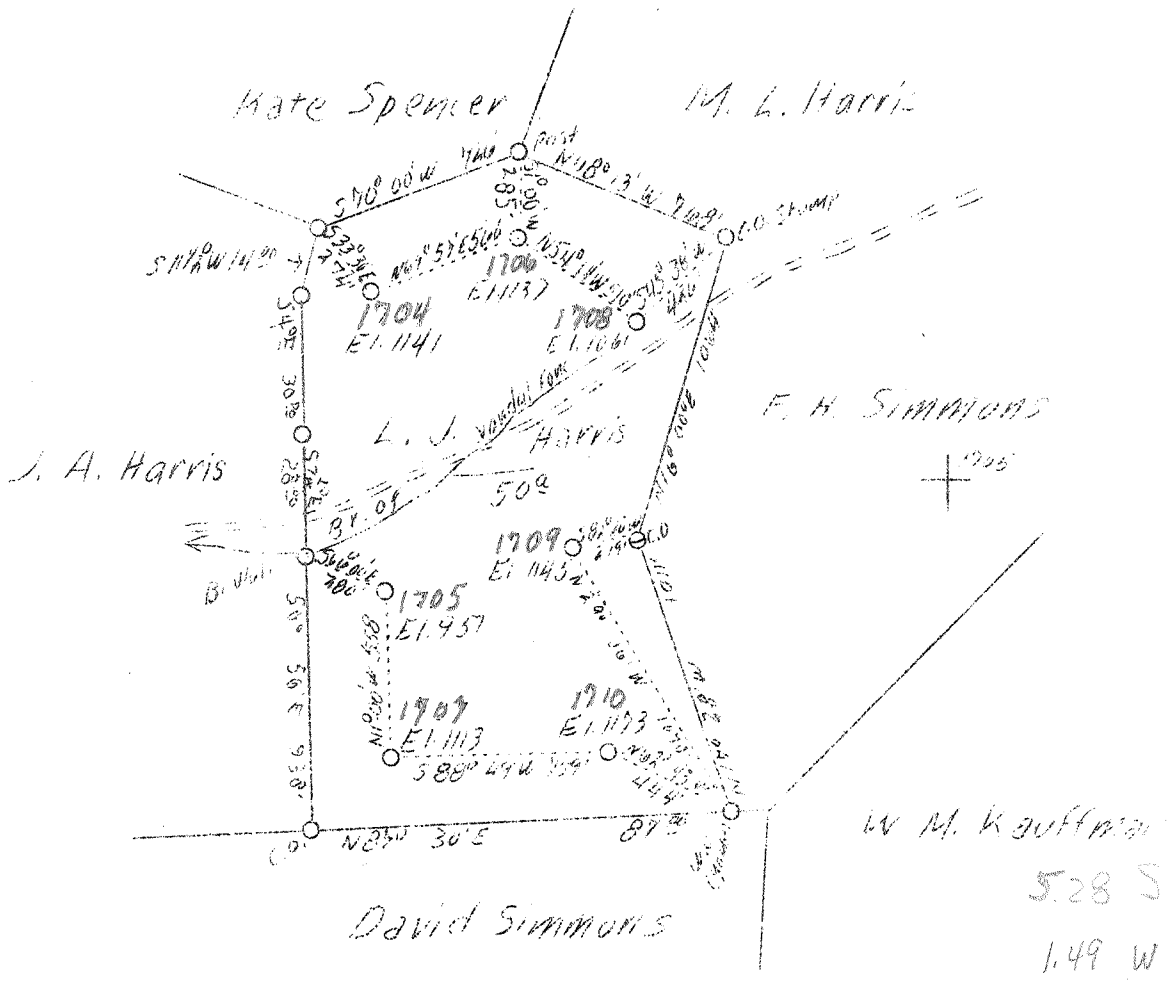


LATITUDE 38° 50'

LONGITUDE 81° 55'



To be covered by
Road & Moses
Sale W. Va.

ABD - 1704-5-7-B-9-410

F.B. WSP 71 16

Company Hope Constr. & Refing Co.
 Address Clarksburg, W. Va.
 Farm L. J. Harris
 Acres 50
 Lease No. 5917
 Well (Farm) No. 706 207 208 210
 Serial No. 1704-1705-1706-1707-1708-
 1709-1710
 Elevation (SP) 1141- 951-1137-1113-1061-
 1145-1173
 Quadrangle Spencer S, E, Millstone Run
 County Roane
 District Smithfield
 Engineer W. M. Bowers
 Eng. Reg. No. 900
 Date March 22, 1938
 Scale 1" - 40 poles

STATE OF WEST VIRGINIA
 Department of Mines
 OIL & GAS DIVISION
 Charleston

WELL LOCATION MAP

File No. 100-206-778-9-10 & 11
 ABD.

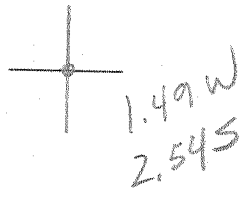
x Denotes location of well on U. S. Topo-
 graphic Maps, scale 1 to 62,500, latitude
 and longitude lines being represented by
 border lines as shown.

- Denotes one inch spaces on border line
 of original tracing.

1412

LATITUDE 38° 47' 30"

11° 00' 51" 018 LONGITUDE



7'5 OGIS topo location

7.5' loc _____ 15' loc _____
 (calc.) _____

Company _____

Farm _____

Quad Spencer 7 1/2'

County Roane

District Smithfield

WELL LOCATION MAP

File No. 087-211A

87-206A

L J Harris 1704

Elev 1141'

TD = 2316'

87-207A

L. J Harris 1705

Elev 951'

TD = 2113'

87-208A

LJ Harris 1707

Elev 1113'

TD = 2278'

87-209A

L J Harris 1709

Elev 1145'

TD = 2314

87-210A

LJ Harris 1708

Elev 1061

TD = 2238

87-211A

L J Harris 1710

Elev = 1173

TD = 2343