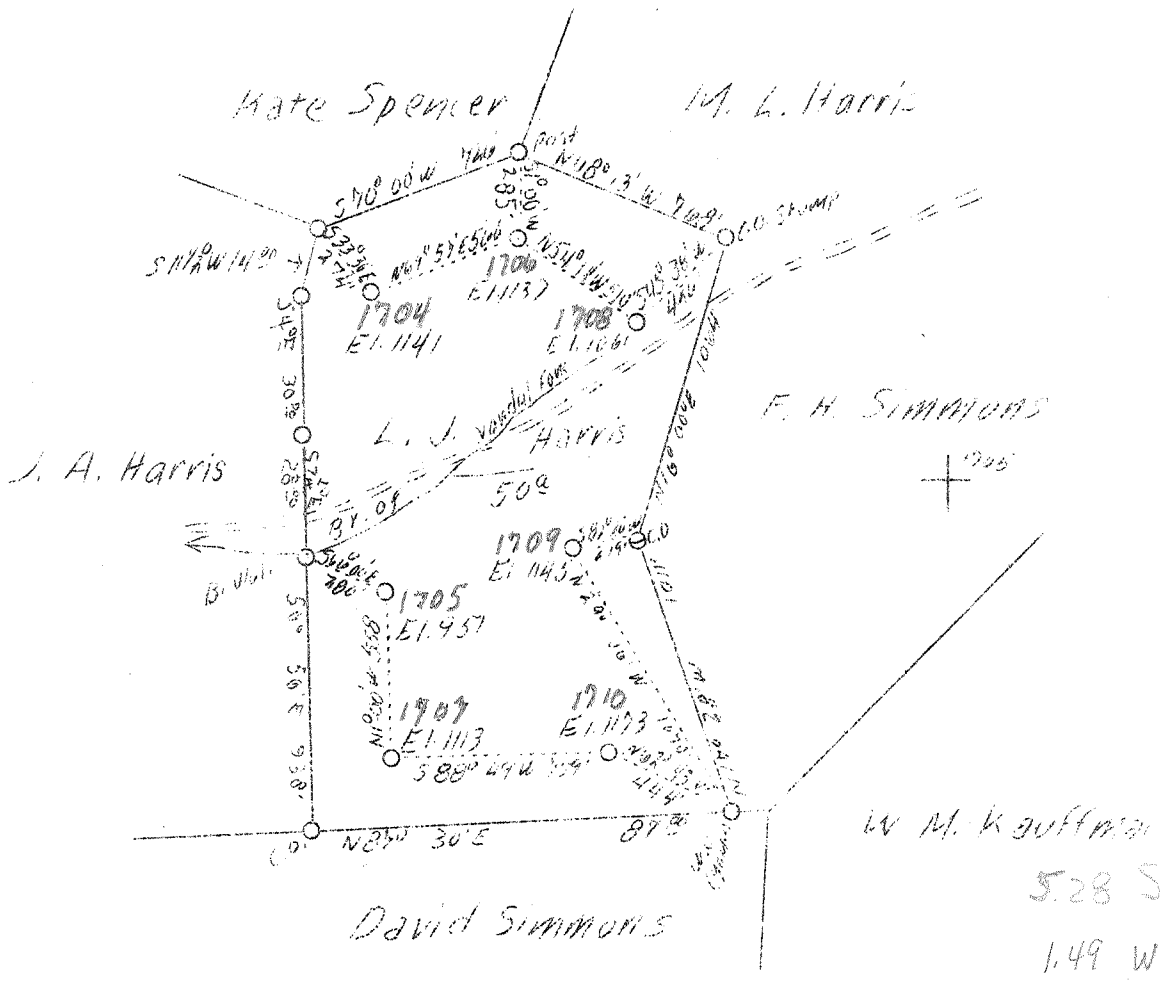


LATITUDE 38° 50'

LONGITUDE 81° 51'



To be shown by  
Road & Moses  
Salem, W. Va.

APP. - 1704-5-7-B-9-410

F.B. WSP 71 25

Company	Hope Constr. & Refing Co.
Address	Clarksburg, W. Va.
Farm	L. J. Harris
Acres	50
Lease No.	5917
Well (Farm) No.	204 207 208 210
Serial No.	1704-1705-1706-1707-1708- 1709-1710
Elevation (SP)	1141- 951-1137-1113-1061- 1145-1173
Quadrangle	Spencer S <sub>1</sub> E <sub>1</sub> Millstone Run
County	Roane
District	Smithfield
Engineer	W. M. Bowers
Eng. Reg. No.	900
Date	March 22, 1938
Scale	1" - 40 poles

STATE OF WEST VIRGINIA  
Department of Mines  
OIL & GAS DIVISION  
Charleston

WELL LOCATION MAP

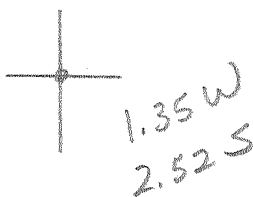
File No. ROC-206-178-9-104  
APP.

x Denotes location of well on U. S. Topo-  
graphic Maps, scale 1 to 62,500, latitude  
and longitude lines being represented by  
border lines as shown.

- Denotes one inch spaces on border line  
of original tracing.

LATITUDE 38° 47' 30"

100/51018 LONGITUDE



7'5 OGIS topo location

7.5' loc \_\_\_\_\_ 15' loc \_\_\_\_\_  
 \_\_\_\_\_ (calc.) \_\_\_\_\_

Company \_\_\_\_\_

Farm \_\_\_\_\_

Quad Spencer 7 1/2'

County Roane

District Smithfield

WELL LOCATION MAP

File No. 087-2084

87-206A

L J Harris 1704

Elev 1141'

TD = 2316'

87-207A

L. J Harris 1705

Elev 951'

TD = 2113'

87-208A

LJ Harris 1707

Elev 1113'

TD = 2278'

87-209A

L J Harris 1709

Elev 1145'

TD = 2314

87-210A

LJ Harris 1708

Elev 1061

TD = 2238

87-211A

L J Harris 1710

Elev = 1173

TD = 2343