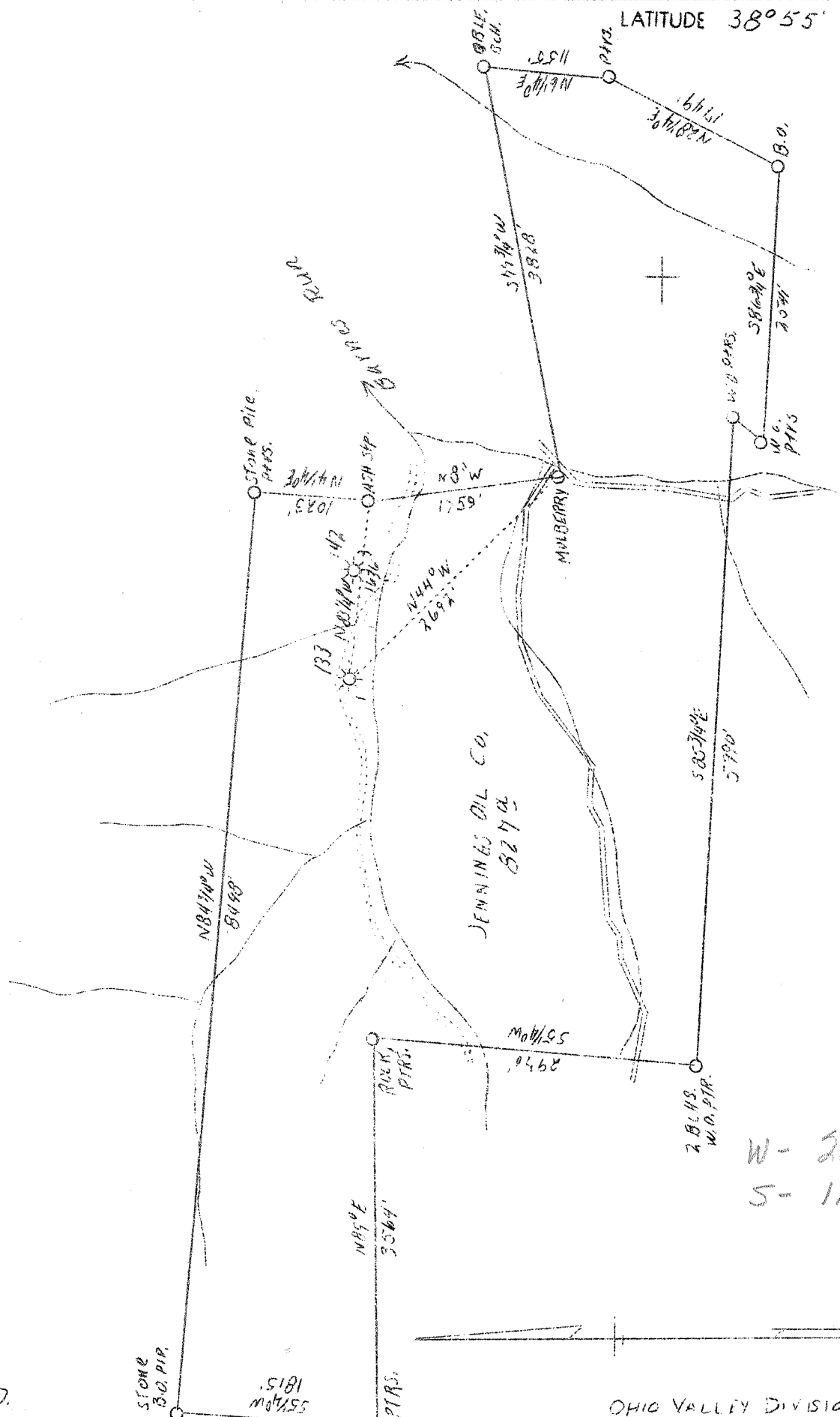


LATITUDE 38° 55'

LONGITUDE 81° 15'



A.B.D.

OHIO VALLEY DIVISION

Company	W. Va. Gas Corp.
Address	401 Union Bldg., Charleston, W. Va.
Farm	Jennings Oil Co.
Acres	827
Lease No.	Deed OV19
Well (Farm) No.	One
Serial No.	OV133
Elevation (SL)	731.9
Quadrangle	Spencer N. E.
County	Roane
District	Spencer
Engineer	Robert S. Hyde
Eng. Reg. No.	646
File No.	3
Drawing No.	R.O.119
Date 10/18/38	Scale 1" - 1320'

STATE OF WEST VIRGINIA
Department of Mines
OIL & GAS DIVISION
Charleston

WELL LOCATION MAP

File No. Roa-203-A

x Denotes location of well on U. S. Topographic Maps, scale 1 to 62,500, latitude and longitude lines being represented by border lines as shown.

- Denotes one inch spaces on border line of original tracing.

87-30203

See microfilm for well record

completed 5/14/1913

TD = 2175

Shot 8/27/13 → 2151'

Vol. 800 McF