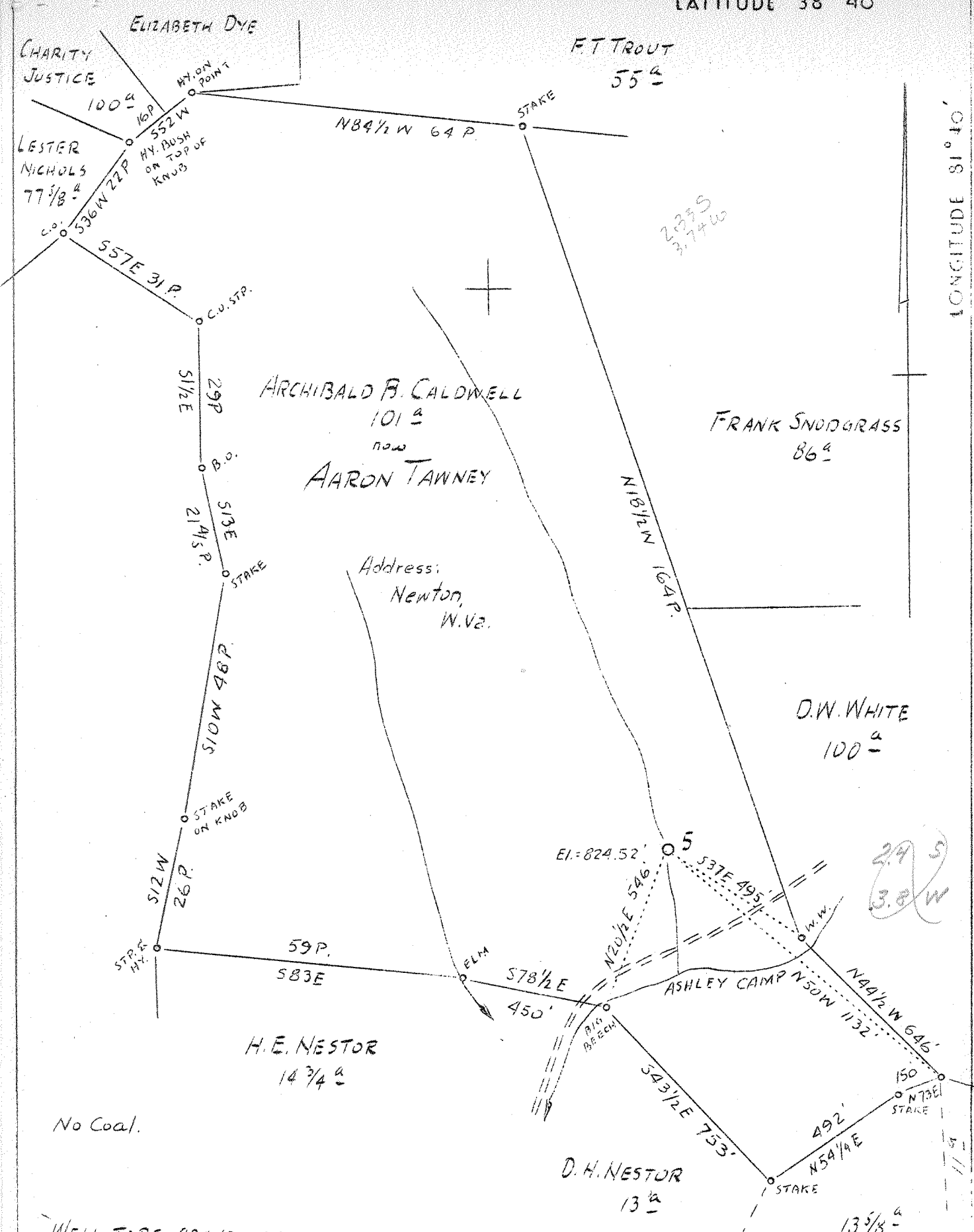


LATITUDE 38° 40'

LONGITUDE 81° 40'



No Coal.

WELL TO BE ABANDONED

Company	South Penn Oil Co.
Address	411 Seventh Avenue, Pittsburgh, Pa.
Form	A.B. Caldwell
Acres	101
Lease No	60219
Well (Form) No	5
Quadrangle	Otter WC
County	Roane
District	Smithfield
Engineer	E.C. Tabler
Date	August 15, 1938
Scale	1"=400'

STATE OF WEST VIRGINIA
 Department of Mines
 OIL AND GAS DIVISION
 Charleston

WELL LOCATION MAP

File No. ROA - 198A

x Denotes location of well on United States Topographic Maps, scale 1 to 62,500, latitude and longitude lines being represented by border lines as shown

- Denotes one inch spaces on border line of original tracing.

Smithfield District, Roane County, W. Va.

By South Penn Oil Co., 411 Seventh Ave., Pittsburgh, Pa.

On 101 acres, on Lefthand.....

Elevation, 824.52' L.

Surface owned by Aaron Tawney, Newton, W. Va., and minerals by
Clay Cook et al., R. D. No. 1, Minersville, Ohio.

Drilling commenced May 13, 1916; completed, June 15, 1916.

Shot June 30, 1916, in Big Injun Sand.

Oil, 5 bbls., 1st 24 hrs.

Salt water at 1400'.

10" casing, 140'; 8 $\frac{1}{2}$ "², 485'; 6 $\frac{5}{8}$ "², 1720'; conductor, 16'; all left in.

Oil well. Abandonment reported to Dept. of Mines Aug. 23, 1938.

Record to RCT from Mrs. Griffith Sept. 22, 1938.

	Top.	Bottom.
Big Dunkard Sand	440	- 560
Salt Sand (water, 1400')	1350	- 1580
Maxton Sand	1610	- 1635
Little Lime	1650	- 1685
Pencil Cave	1685	- 1700
Big Lime	1700	- 1804
Keener Sand	1804	- 1812
Big Injun Sand (oil and gas, 1822')	1812	- 1840
Slate	1840	- 1857
Total depth		1857

WEST VIRGINIA DEPARTMENT OF MINES
OIL AND GAS DIVISION

192

WELL RECORD

Permit No. 198-A

Oil or Gas Well OIL
(Kind)

Company SOUTH PENN OIL COMPANY
 Address 411 Seventh Ave., Pittsburgh, Pa.
 Farm A. B. Caldwell Acres 101
 Location (waters) Left Hand
 Well No. 5 Elev. 824.52'
 District Smithfield County Roane
 The surface of tract is owned in fee by Aaron Tawney
 Address Newton, W. Va.
 Mineral rights are owned by Clay Cook et al
R.D. #1, Address Minersville, Ohio
 Drilling commenced May 15, 1916
 Drilling completed June 15, 1916
 Date shot 6-30-16 Depth of shot Big Injun
 Open Flow /10ths Water in - Inch
 /10ths Merc. in - Inch
 Volume - Cu. Ft.
 Rock Pressure - lbs. - hrs.
 Oil 5 bbls., 1st 24 hrs.
 Fresh water - feet - feet
 Salt water 1400 feet 1 feet

Casing and Tubing	Used in Drilling	Left in Well	Packers
Size			Kind of Packer
16			-
13			-
10	140		Size of
8 1/4	485		-
6 5/8	1720		Depth set
5 3/16			-
3			Perf. top
2			Perf. bottom
Liners Used			Perf. top
Cond. 16			Perf. bottom

CASING CEMENTED - SIZE - No. FT. - Date -
 COAL WAS ENCOUNTERED AT - FEET - INCHES
- FEET - INCHES - FEET - INCHES
- FEET - INCHES - FEET - INCHES

Formation	Color	Hard or Soft	Top	Bottom	Oil Gas or Water	Depth Found	Remarks
Big Dunkard Sand			440	560	Water	1400	
Salt Sand			1350	1580			
Mason Sand			1610	1635	Oil & Gas	1822	
Little Lime			1650	1685			
Pencil Cave			1685	1700			
Big Lime			1700	1804			
Keener Sand			1804	1812			
Big Injun Sand			1812	1840			
Slate			1840	1857			
Total Depth				1857			

