

1

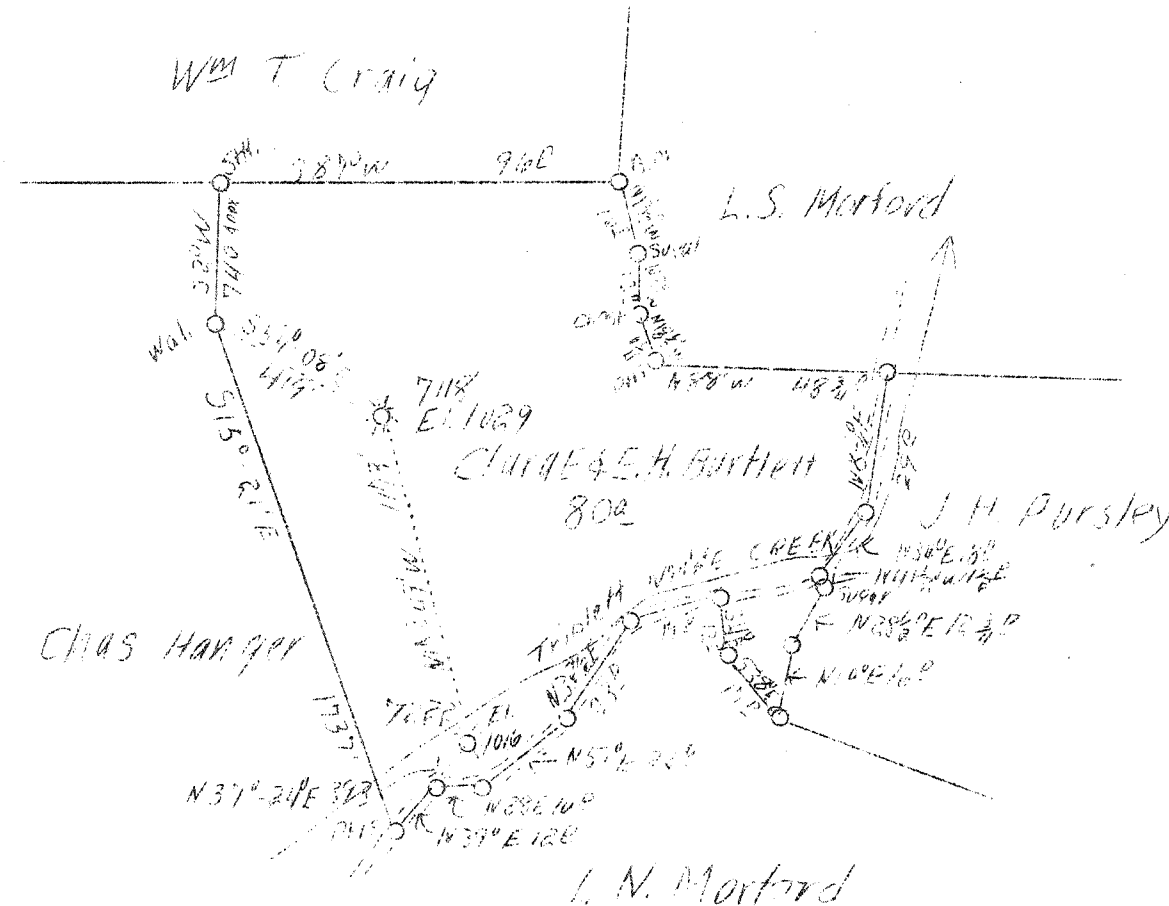
2

3

LATITUDE 38° 50'

1545  
2107

LONGITUDE 81° 15'



15 S  
21 W

7118

Company	Hope Natural Gas Co.
Address	Clarksburg, W.Va.
Farm	Craig-Bartlott
Tract	Acres 80 Lease No. 42767
Well ( Farm) No.	Serial No. 7118-7222
Elevation (Spirit Level)	1029-1016
Quadrangle	Spencer S.E.
County	Roane District Spencer
Engineer	W.M. Bowers
Engineer's Registration No.	900
File No.	Drawing No.
Date	May 11, 1938 Scale 1"-40 P.

STATE OF WEST VIRGINIA  
 Department of Mines  
 OIL AND GAS DIVISION  
 CHARLESTON

WELL LOCATION MAP

File No. Roan-158-A

Denotes location of well on United States Topographic Maps, scale 1 to 62,500, latitude and longitude lines being represented by border lines as shown.

Denotes one inch spaces on border line of original tracing.

Spencer District, Roane County, W. Va.  
 By Hope Natural Gas Co., Clarksburg, W. Va.  
 On 80 acres, on Triplett Creek.  
 Elevation, 1029' L.  
 Drilling commenced 2-24-1925; completed, 4-6-1925.  
 Well was not shot.  
 No fresh water recorded; salt water at 1840'.  
 10" casing, 875' (pulled); 8 $\frac{1}{2}$ "<sup>1</sup>, 1300'; 6 $\frac{5}{8}$ "<sup>2</sup>, 2077'; 2" tubing,  
 2250' (pulled).  
 Casing not cemented.  
 No coal was encountered.  
 Gas well. Abandonment reported to Dept. of Mines May 11, 1938.  
 Record to RCT from Mrs. Griffith May 27, 1938.

	Top.	Bottom.
Slate and shells	685	- 1340
Gas Sand	1340	- 1535
First Salt Sand	1535	- 1810
Second Salt Sand (water, 1840')	1810	- 1925
Maxton Sand	1925	- 1979
Little Lime	1979	- 2012
Pencil Cave	2012	- 2017
Big Lime	2017	- 2184
Big Injun Sand (gas, 2212, 2223, 2247 $\frac{1}{2}$ ' <sup>1</sup> )	2184	- 2256
Total depth		2260

WEST VIRGINIA DEPARTMENT OF MINES  
OIL AND GAS DIVISION

177

WELL RECORD

Permit No. ROA-185A

Oil or Gas Well.....  
(Kind)

Company Hope Natural Gas Company,  
Address Clarksburg, W. Va.,  
Farm Craig-Bartlett Acres 80  
Location (waters) Triplet Creek  
Well No. 7118 Elev. 1029  
District Spencer County Roane  
The surface of tract is owned in fee by.....  
Address.....  
Mineral rights are owned by.....  
Address.....  
Drilling commenced 2-24-1925  
Drilling completed 4-6-1925  
Date shot Not shot Depth of shot.....  
Open Flow /10ths Water in..... Inch  
/10ths Merc. in..... Inch  
Volume..... Cu. Ft.  
Rock Pressure..... lbs..... hrs.  
Oil..... bbls., 1st 24 hrs.  
Fresh water None recorded feet..... feet  
Salt water 1840 feet..... feet

Casing and Tubing	Used in Drilling	Left in Well	Packers
Size			Kind of Packer
16.....			
13.....			
10.....	<u>875</u>	<u>Pulled</u>	Size of.....
8 1/4.....	<u>1300</u>	<u>1300</u>	
6 5/8.....	<u>2077</u>	<u>2077</u>	Depth set.....
5 3/16.....			
3.....			Perf. top.....
2.....	<u>2250</u>	<u>Pulled</u>	Perf. bottom.....
Liners Used.....			Perf. top.....
			Perf. bottom.....

CASING CEMENTED..... SIZE..... No. FT..... Date  
Not cemented  
COAL WAS ENCOUNTERED AT..... FEET..... INCHES  
No coal  
..... FEET..... INCHES..... FEET..... INCHES  
..... FEET..... INCHES..... FEET..... INCHES

Formation	Color	Hard or Soft	Top	Bottom	Oil Gas or Water	Depth Found	Remarks
Slate & Shells			685	1540			
Gas Sand			1540	1535			
First Salt Sand			1535	1810			
Second Salt Sand			1810	1925	Water	1840	
Maxon Sand			1925	1979			
Little Lime			1979	2012			
Pencil Cave			2012	2017			
Big Lime			2017	2184			
Big Injun Sand			2184	2256	Gas	2212-2225-2247.	
Total Depth				2260			

