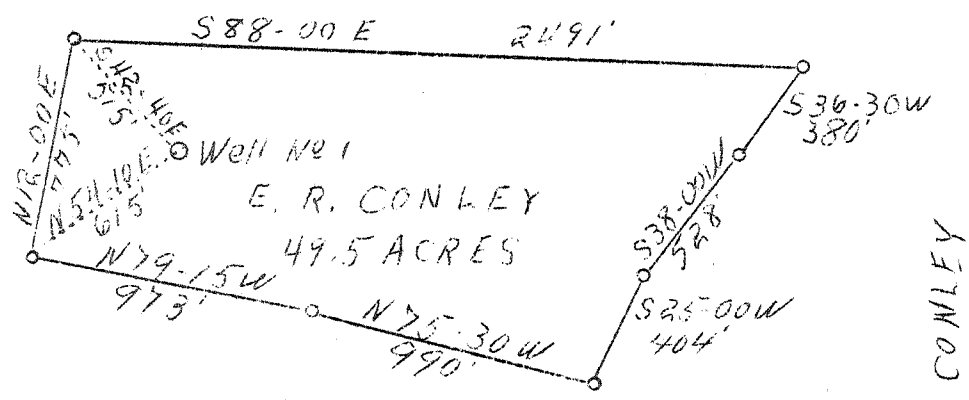


1 2 3

LATITUDE 38° 40'

LONGITUDE 81° 05'

JAS. A. BOGGS



CAL CONLEY

W. R. HUNT

1.9 S
3.7 W

ABD.

Company	United Carbon Co.
Address	Charleston, W.Va.
Farm	E.R. Conley
Tract	Acres 49.5 Lease No. 1840
Well (Farm) No.	1 Serial No. 423
Elevation (Spirit Level)	Not given
Drangle	Otter C
County	Roane District Geary
Engineer	C.B. Wilson
Engineer's Registration No.	494
File No.	Drawing No.
Date	April 26, 1938 Scale 1"=660'

STATE OF WEST VIRGINIA
 Department of Mines
 OIL AND GAS DIVISION
 CHARLESTON

see microfilm for well record

WELL LOCATION MAP
 File No. 100-184-A

Denotes location of well on United States Topographic Maps, scale 1 to 62,500, latitude and longitude lines being represented by border lines as shown.

Denotes one inch spaces on border line of original tracing.