

LATITUDE 38°55'

3.625
0.26W

LONGITUDE
81°15'

7'5 OGIS topo location

7.5' loc _____ 15' loc _____
(calc.) _____

Company _____

Farm Nick Company 1848

Quad Spencer EC 15'

County Roane

District Spencer

see microfilm for
Plat & Well Record

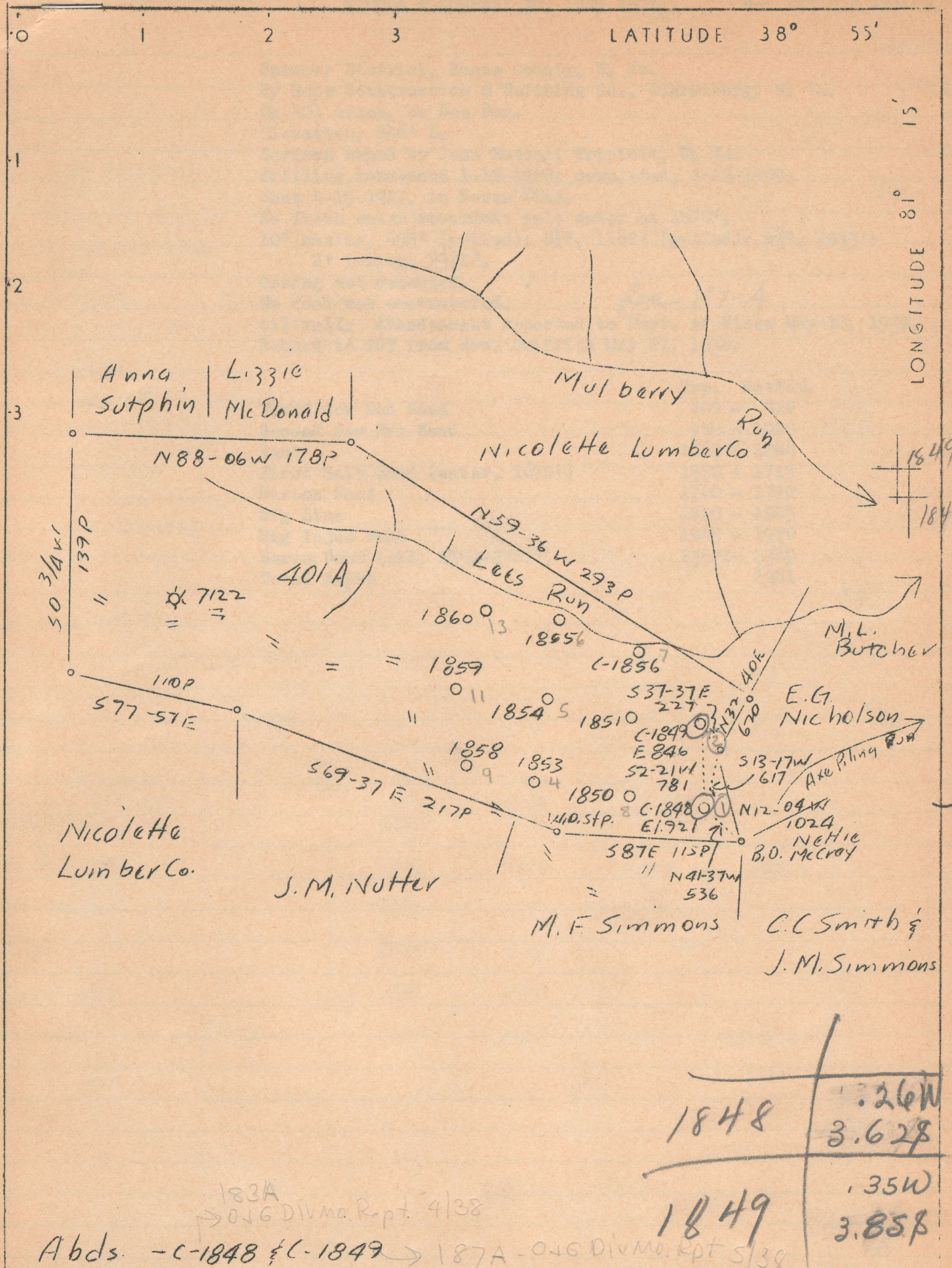
WELL LOCATION MAP

File No. 087 183A

See 187A

LATITUDE 38° 55'

LONGITUDE 81° 15'



Company Hope Constr. & Ref. Co.
 Address Clarksburg, W.Va.
 Farm Nicola & Co.
 Tract Acres 401 Lease No. C-1848
 Well (Farm) No. Serial No. C-1849
 Elevation (Spirit Level) 921, 846
 Quadrangle Spencer
 County Roane District Spencer
 Engineer W.M. Bowers
 Engineer's Registration No. 900
 File No. Drawing No.
 Date Apr. 6, 1938 Scale 1"-80 Poles

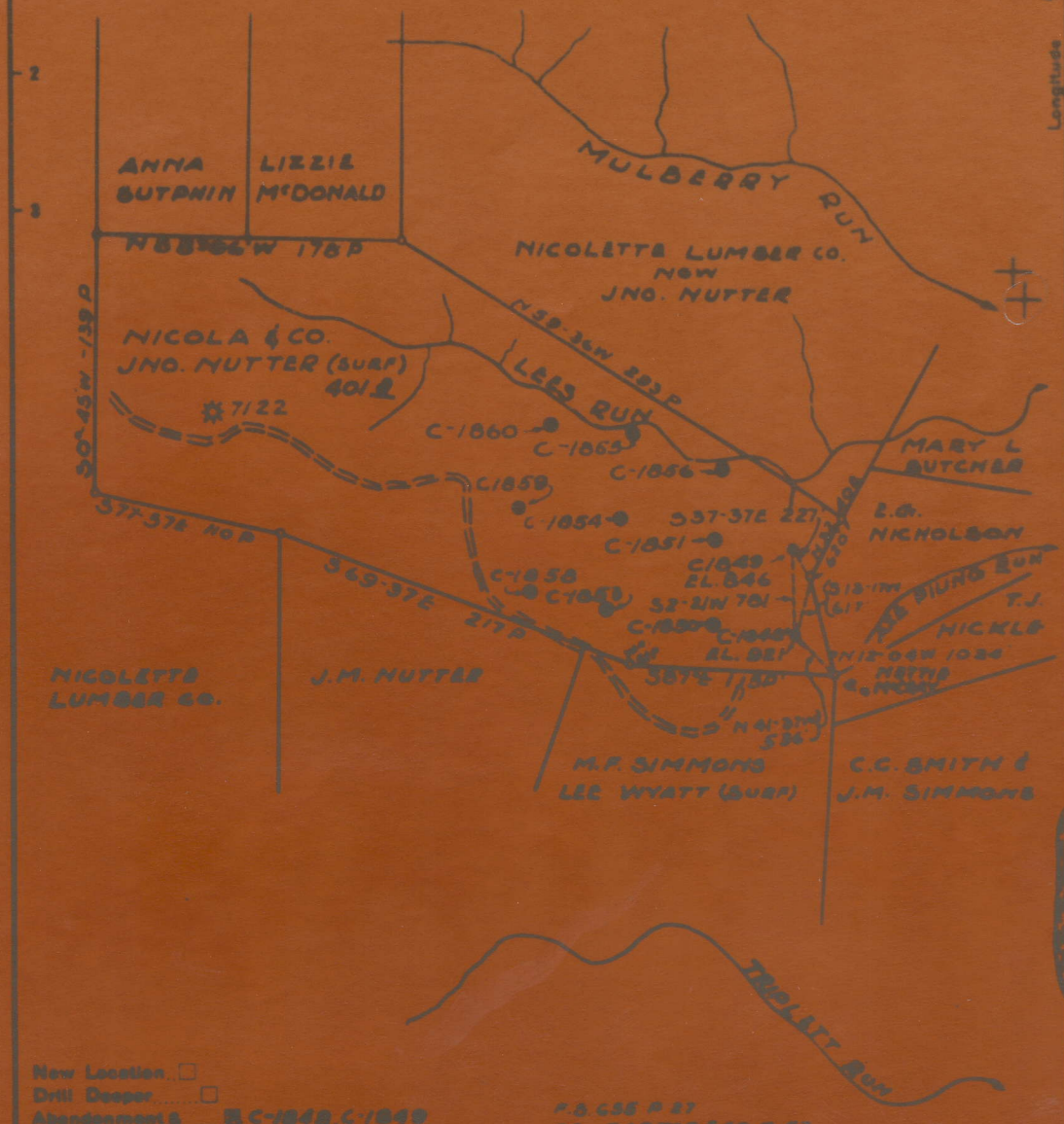
STATE OF WEST VIRGINIA
 Department of Mines
 OIL AND GAS DIVISION
 CHARLESTON

WELL LOCATION MAP

File No. ROA-182A & 183A + 187A

Denotes location of well on United States Topographic Maps, scale 1 to 62,500, latitude and longitude lines being represented by border lines as shown.

Denotes one inch spaces on border line of original tracing.



New Location
 Drill Deeper
 Abandonment C-1048, C-1049

P.D. 655 P. 27
 P.S. - CARTER #49 P. 37

Company HOPS CONSTR. & REP. CO.
 Address CLARKSBURG, W.VA.
 Firm NICOLA & CO
 Tract Acres 401 Lease No. 7-18228

STATE OF WEST VIRGINIA
 DEPARTMENT OF MINES
 OIL AND GAS DIVISION
 CHARLESTON