

1 2 3

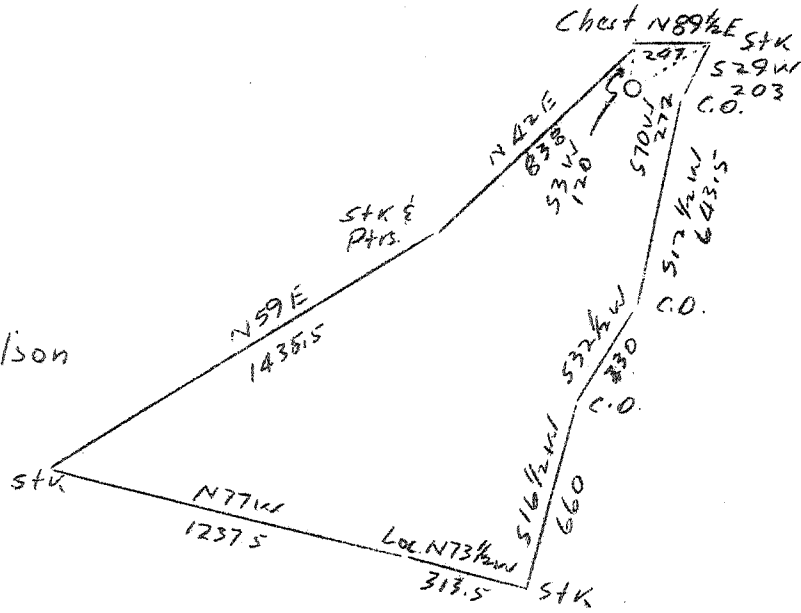
LATITUDE 38° 40'

LONGITUDE 81° 05'

T. F. Simmons

R. F. Wilson

Jno. C. Harold



R. F. Wilson

3.15 W
2.27 A

Abd

Company	Northeastern Oil & Gas
Address	Charleston, W.Va.
Farm	Everett Wilson
Tract	Acres 34 Lease No. 21
Well (Farm) No.	1 Serial No. 28
Elevation (Spirit Level)	1265-B
Quadrangle	Otter C.
County	Roane District Geary
Engineer	B.B. Couk
Engineer's Registration No.	Pa. 4274
File No.	21 Drawing No.
Date	4-2-38 Scale 1"=600'

STATE OF WEST VIRGINIA
 Department of Mines
 OIL AND GAS DIVISION
 CHARLESTON

see microfilm for Well record

WELL LOCATION MAP

File No. ROA-181A

Denotes location of well on United States Topographic Maps, scale 1 to 62,500, latitude and longitude lines being represented by border lines as shown.

Denotes one inch spaces on border line of original tracing.