

LATITUDE 38° 35' 00"



LONGITUDE 81° 22' 30"

7'5 OGIS topo location

7.5' loc _____ 15' loc _____
 (calc.) _____

Company _____

Farm _____

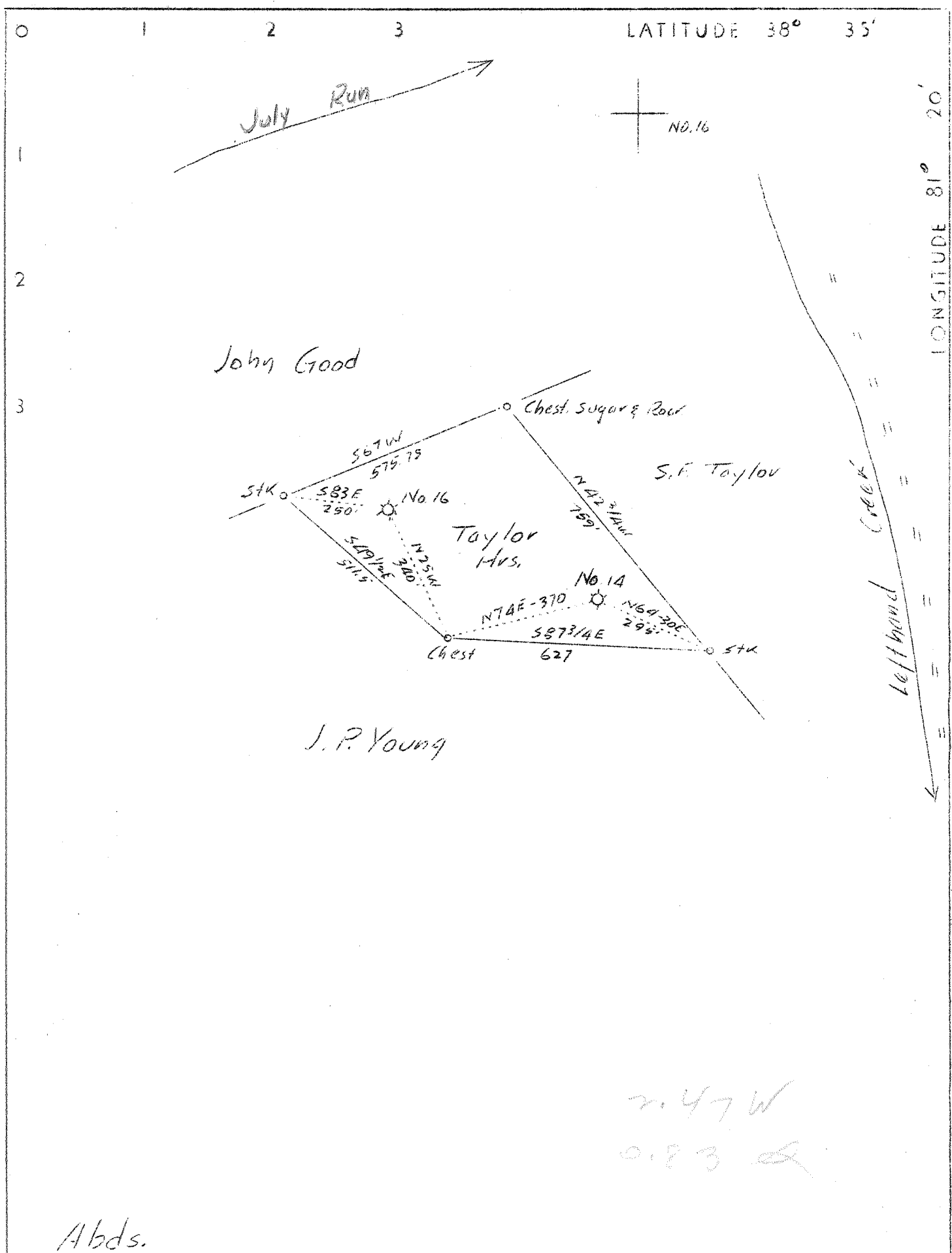
Quad Katbs 7 1/2'

County Roane

District Walton

WELL LOCATION MAP

File No. 087-172A



2.47 W
0.83 E

Abds.

Company	Northeastern Oil & Gas Co.
Address	Charleston, W.Va.
Farm	Taylor Heirs
Tract	6 Acres 6 Lease No. 6
Well (Farm) No.	Serial No. 14 & 16
Elevation (Spirit Level)	945-B & 950-B
Quadrangle	Walton 30
County	Roane District Walton
Engineer	B.B. Cook
Engineer's Registration No.	Surveyor 4274 Pa.
File No.	Drawing No.
Date	12-14-37 Scale 1"-500'

STATE OF WEST VIRGINIA
 Department of Mines
 OIL AND GAS DIVISION
 CHARLESTON

No well records on microfilm

WELL LOCATION MAP

File No. ROA-171A&172A

+ Denotes location of well on United States Topographic Maps, scale 1 to 62,500, latitude and longitude lines being represented by border lines as shown.

— Denotes one inch spaces on border line of original tracing.

(198)