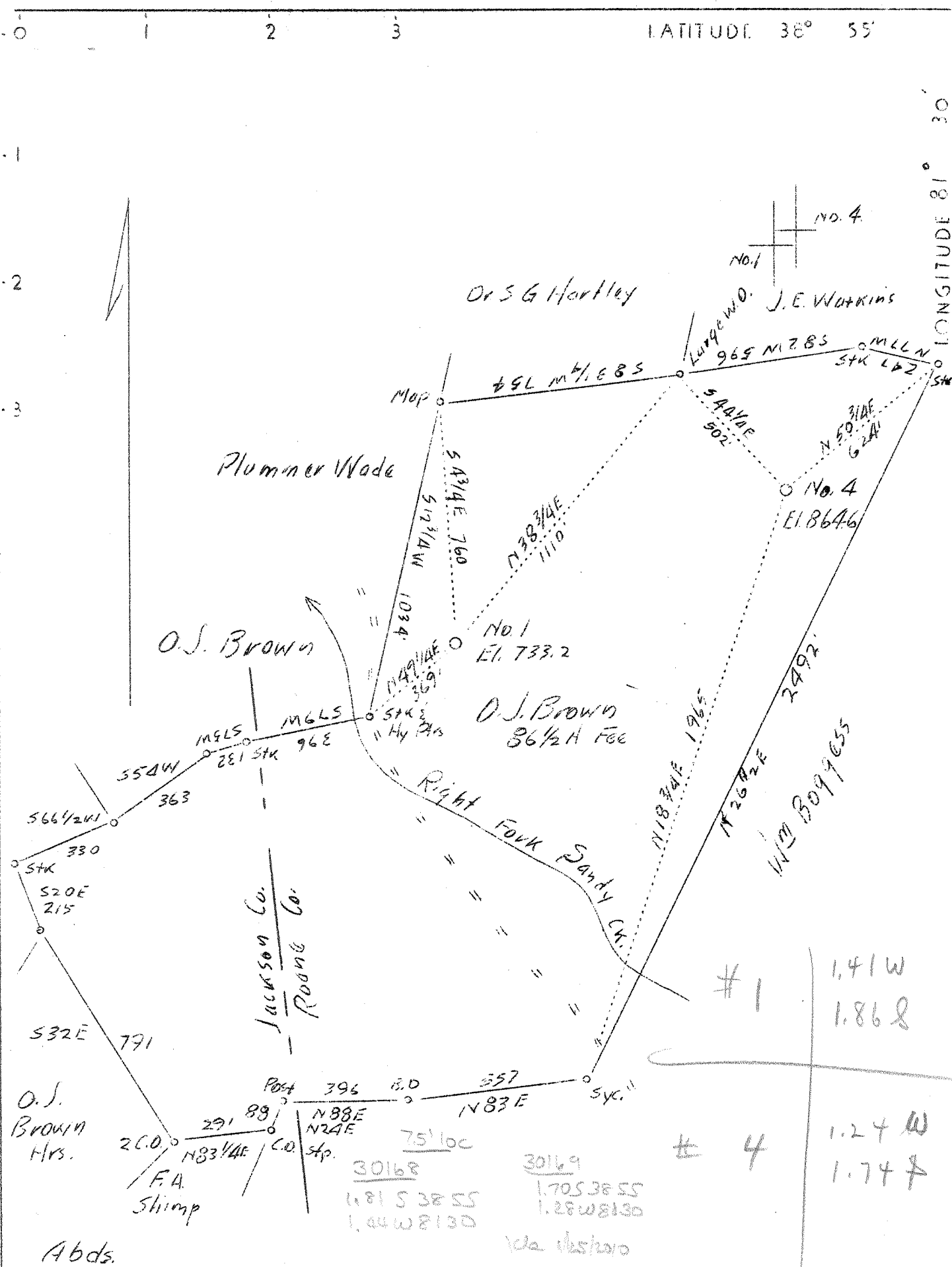


LATITUDE 38° 55'

LONGITUDE 81° 30'



Company South Penn Oil Co.  
 Address 411 Seventh Ave., Pittsburgh, Pa.  
 Farm O.J. Brown  
 Tract Acres 87 Lease No. 79671  
 Well (Farm) No. 1 & 4 Serial No.  
 Quadrangle Ripley/Liverpool E 6  
 County Roane  
 District Reedy  
 Engineer E.C. Tabler  
 Engineer's Registration No.  
 File No. Drawing No.  
 Date Oct. 26, 1937 Scale 1"=400'

STATE OF WEST VIRGINIA  
 Department of Mines  
 OIL AND GAS DIVISION  
 CHARLESTON

WELL LOCATION MAP

File No. ROA-168A&169A

+ Denotes location of well on United States Topographic Maps, scale 1 to 62,500, latitude and longitude lines being represented by border lines as shown.

— Denotes one inch spaces on border line of original tracing.

WEST VIRGINIA DEPARTMENT OF MINES  
OIL AND GAS DIVISION

171

WELL RECORD

Permit No. ROA-168-A

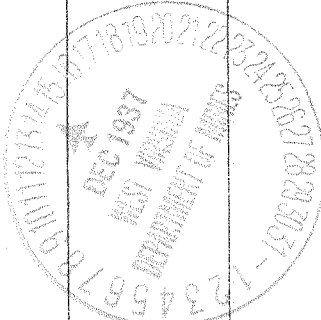
Oil or Gas Well OIL  
(Kind)

Company SOUTH PENN OIL COMPANY  
 Address 411 Seventh Ave., Pittsburgh, Pa.  
 Farm O. J. Brown Acres 87  
 Location (waters) Sand Creek  
 Well No. 1 Elev. 733.20  
 District Reedy County Roane  
 The surface of tract is owned in fee by O. J. Brown  
 Address Liverpool, W. Va.  
 Mineral rights are owned by O. J. Brown et al  
 Address Liverpool, W. Va.  
 Drilling commenced March 1, 1921.  
 Drilling completed April 6, 1921  
 Date shot Apr. 6, 1921 Depth of shot 2369 1/2'  
 Open Flow /10ths Water in - Inch  
 /10ths Merc. in - Inch  
 Volume - Cu. Ft.  
 Rock Pressure - lbs. - hrs.  
 Oil ? bbls., 1st 24 hrs.  
 Fresh water - feet - feet  
 Salt water - feet - feet

| Casing and Tubing | Used in Drilling     | Left in Well | Packers                 |
|-------------------|----------------------|--------------|-------------------------|
| Size              |                      |              |                         |
| 16                |                      |              | Kind of Packer <u>-</u> |
| 13                |                      |              | <u>-</u>                |
| 10                | <u>750 (Pulled)</u>  |              | Size of <u>-</u>        |
| 8 1/4             | <u>1075 (Pulled)</u> |              | <u>-</u>                |
| 6 5/8             | <u>1964</u>          |              | Depth set <u>-</u>      |
| 5 3/16            | <u>2005</u>          |              | <u>-</u>                |
| 3                 |                      |              | Perf. top <u>-</u>      |
| 2                 |                      |              | Perf. bottom <u>-</u>   |
| Liners Used       |                      |              | Perf. top <u>-</u>      |
|                   |                      |              | Perf. bottom <u>-</u>   |

CASING CEMENTED - SIZE - No. FT. - Date -  
 COAL WAS ENCOUNTERED AT - FEET - INCHES  
- FEET - INCHES - FEET - INCHES  
- FEET - INCHES - FEET - INCHES

| Formation           | Color      | Hard or Soft | Top  | Bottom   | Oil Gas or Water | Depth Found      | Remarks |
|---------------------|------------|--------------|------|----------|------------------|------------------|---------|
| Pittsburgh          | <u>Red</u> |              | 500  | 585      |                  |                  |         |
| Shells & Sand       |            |              | 750  | 790      |                  |                  |         |
| Little Dunkard Sand |            |              | 950  | 995      |                  |                  |         |
| Sand                |            |              | 1020 | 1050     |                  |                  |         |
| Sand                |            |              | 1110 | 1200     |                  |                  |         |
| Salt Sand           |            |              | 1630 | 1880     |                  |                  |         |
| Big Lime            |            |              | 1880 | 1930     |                  |                  |         |
| Big Injun           |            |              | 1930 | 1960     |                  |                  |         |
| Hard Shell          |            |              | 1975 | 2125     |                  |                  |         |
| Brown Shell         |            |              | 2344 | 2364     |                  |                  |         |
| Berea Grit          |            |              | 2364 | 2367     |                  |                  |         |
| Break               |            |              | 2367 | 2369     |                  |                  |         |
| Hard                |            |              | 2369 | 2371     |                  |                  |         |
| Bottom of Sand      |            |              |      | 2378     | <u>Pay</u>       | <u>2371-2378</u> |         |
| Total Depth         |            |              |      | 2382 1/2 |                  |                  |         |



| Formation | Color | Hard or Soft | Top | Bottom | Oil, Gas or Water | Depth Found | Remarks |
|-----------|-------|--------------|-----|--------|-------------------|-------------|---------|
|           |       |              |     |        |                   |             |         |
|           |       |              |     |        |                   |             |         |
|           |       |              |     |        |                   |             |         |
|           |       |              |     |        |                   |             |         |
|           |       |              |     |        |                   |             |         |
|           |       |              |     |        |                   |             |         |
|           |       |              |     |        |                   |             |         |
|           |       |              |     |        |                   |             |         |
|           |       |              |     |        |                   |             |         |
|           |       |              |     |        |                   |             |         |

Date December 13, 19 37

APPROVED SOUTH PENN OIL COMPANY, Owner

By Elliott Young Land Agent.  
(Title)