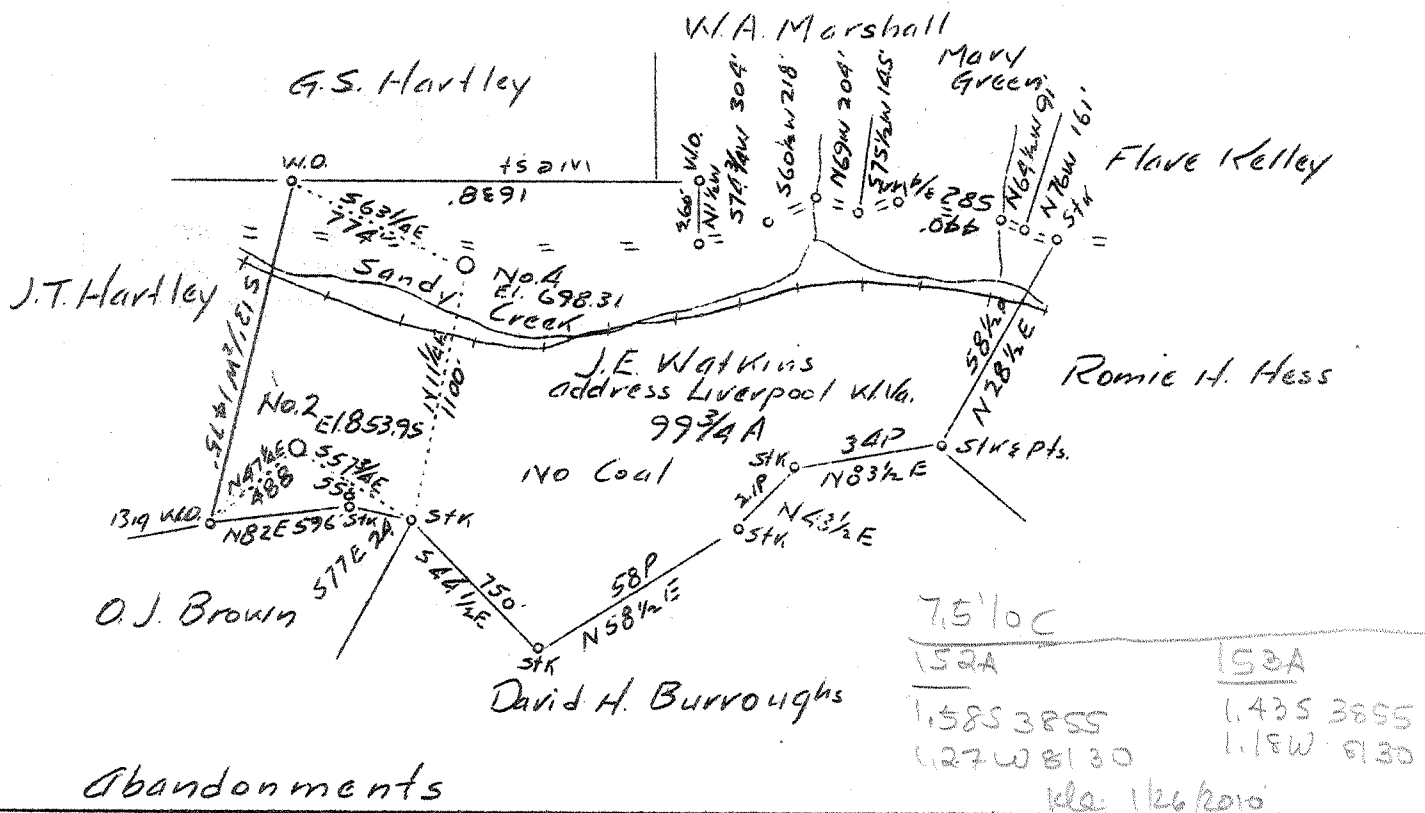


153 #4
152 #10

1465
120 W
1164 S
124 W

No. 4 - 1.2 W
1.47 A

No. 2 - 1.24 W
1.64 A



75' loc

152A 153A

1.585 3855 1.435 3855

1.27 W 8130 1.15 W 8130

126/2010

Abandonments

Company	South Penn Oil Co.
Address	411 7th Ave., Pittsburgh, Pa.
Farm	C. P. Davis
Tract	Acres 100 Lease No. 79676
Well (Farm) No.	2 & 4 Serial No.
Quadrangle	Ripley <u>EC</u>
County	Roane <u>Liverpool 75' good</u>
District	Reedy
Engineer	E. C. Tabler
Engineer's Registration No.	
File No.	Drawing N.
Date	3-1-37 Scale 1" = 800'

STATE OF WEST VIRGINIA
 Department of Mines
 OIL AND GAS DIVISION
 Charleston

WELL LOCATION MAP

File No. ROA-152A & 153A

+ Denotes location of well on U. S. Topographic Maps, scale 1 to 62,500 latitude and longitude lines being represented by border lines as shown.

— Denotes one inch spaces on border line of original tracing.

152A

Reedy District, Reane County, W. Va.
 By South Penn Oil Co., C. of C. Bldg., Pittsburgh, Pa.
 On 100 acres, on Sandy Creek; surface owned by J. E. Watkins, Liverpool,
 W. Va., and minerals by L. C. Davis et al., Box 28, Charlesten, W.Va.

Elevation, 653.95' L.

Drilling commenced Nov. 11, 1921; completed, Dec. 22, 1921.

6-bbl. oil well.

Salt Water at 1845'.

10" casing, 862' (pulled); 8 $\frac{1}{2}$ " , 1260' (pulled); 6-5/8" , 2101'; 2" tubing,
 2511'; conductor, 14'.

No coal was encountered.

Abandonment reported to Dept. of Mines March 17, 1927.

Record to RCT from Dept. of Mines 4-30-37.

	Top.	Bottom.
Salt Sand (water, 1845')	1550	- 2004
Big lime	2004	- 2047
Big Injun Sand	2047	- 2097
Brown shale	2480	- 2495
Merca Sand (oil and gas, 2497-2507')	2495	- 2507
Blue lime	2507	- 2511
Total Depth		2511

WEST VIRGINIA DEPARTMENT OF MINES
OIL AND GAS DIVISION

162

WELL RECORD

Permit No. ROA 152-A

Oil or Gas Well OIL
(Kind)

Company SOUTH PENN OIL COMPANY
 Address C. of C. Bldg., Pittsburgh, Pa.
 Farm C. P. Davis Acres 100
 Location (waters) Sand Creek
 Well No. 2 Elev. 853.95'
 District Reedy County Roane
 The surface of tract is owned in fee by J. E. Watkins
 Address Liverpool, W.Va.
 Mineral rights are owned by L.C. Davis, et al.
Box 28, Address Charleston, W.Va.
 Drilling commenced Nov. 11, 1921
 Drilling completed Dec. 22, 1921
 Date shot ? Depth of shot _____
 Open Flow /10ths Water in _____ Inch
 /10ths Merc. in _____ Inch
 Volume _____ Cu. Ft.
 Rock Pressure _____ lbs. _____ hrs.
 Oil 6 _____ bbls., 1st 24 hrs.
 Fresh water _____ feet _____ feet
 Salt water 1845 feet _____ feet

Casing and Tubing	Used in Drilling	Left in Well	Packers
Size			
16			Kind of Packer
13			
10	862 (Pulled)		Size of
8 1/4	1260 (Pulled)		
6 5/8	2101		Depth set
5 3/16			
3			Perf. top
2 Tub	2511		Perf. bottom
Liners Used			Perf. top
Cond.	14		Perf. bottom

CASING CEMENTED _____ SIZE _____ No. FT. _____ Date _____
 COAL WAS ENCOUNTERED AT _____ FEET _____ INCHES
 _____ FEET _____ INCHES _____ FEET _____ INCHES
 _____ FEET _____ INCHES _____ FEET _____ INCHES

Formation	Color	Hard or Soft	Top	Bottom	Oil Gas or Water	Depth Found	Remarks
Salt Sand			1550	2004	Water	1845	
Big Lime			2004	2047			
Big Injun			2047	2097			
Brown Shale			2480	2495			
Berea			2495	2507			
Blue Lime			2507	2511	Oil & Gas	2497-2507	
Total Depth				2511			

