

LATITUDE 38° 47' 30"

LONGITUDE 81° 30' 00"

+ 1.43 W
1.65 S

7'5 OGIS topo location

7.5' loc _____ 15' loc _____
(calc.) _____

Company _____

Farm _____

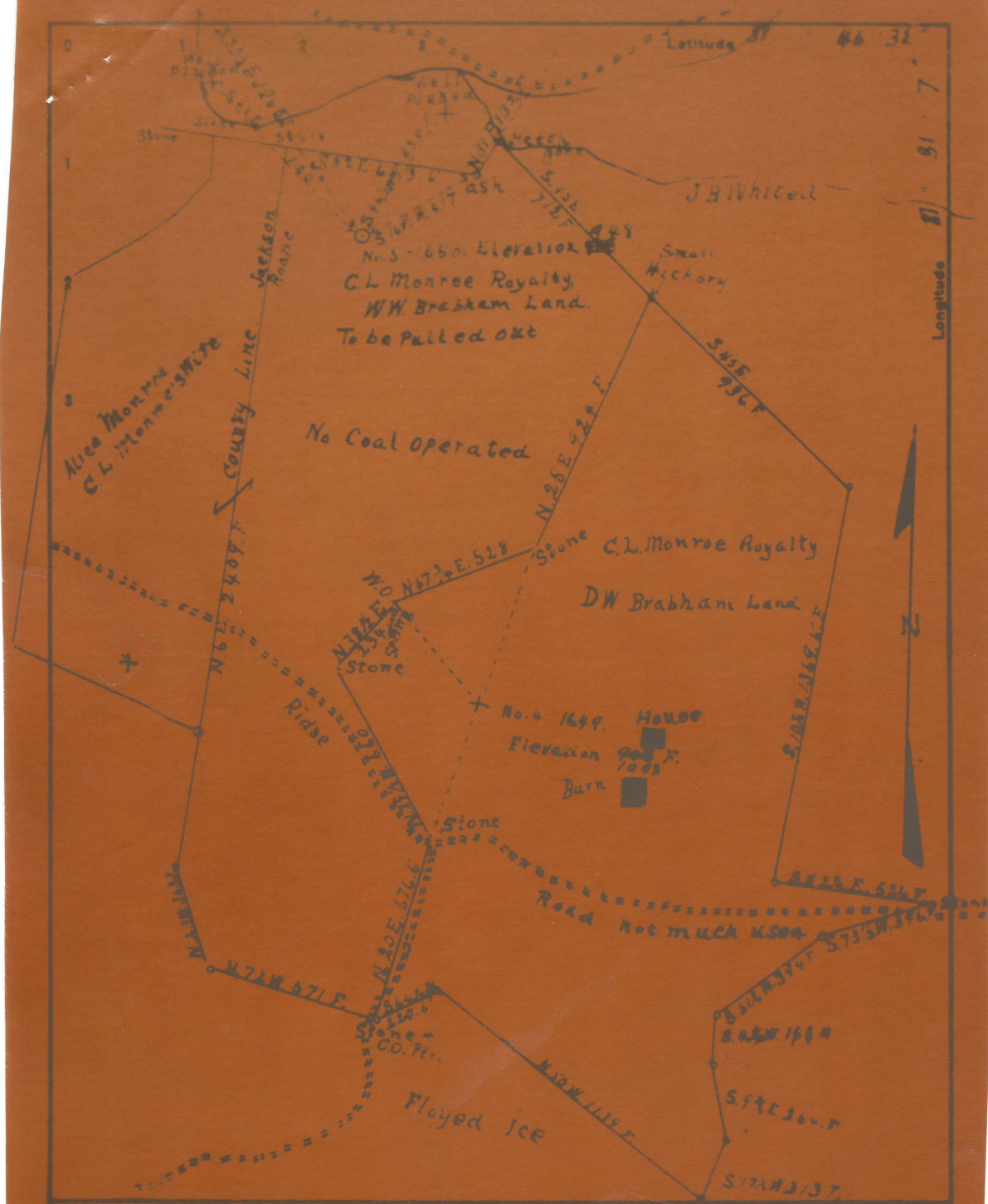
Quad Gay 7 1/2'

County Roure

District Harper

WELL LOCATION MAP

File No. 087 - 150A



Company Walker Beren Oil Company
 Address P.O. Box 1105 Parkersburg, W. Va.
 Farm W.W. & D.W. Brabham

STATE OF WEST VIRGINIA
 DEPARTMENT OF MINES
 OIL AND GAS DIVISION
 CHARLESTON

MONROE, C. L., NO. 5 (1650).

Roa-150-A.

By Walker-Beren Oil Co.

Harper Dist.

See microfilm for Well record & Plot