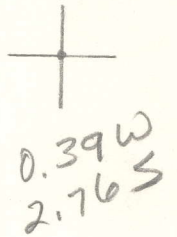


LATITUDE 38°45'00"

00°51'18" LONGITUDE



7'5 OGIS topo location

7.5' loc _____ 15' loc _____
 _____ (calc.) _____

Company _____

Farm _____

Quad Looneyville 7 1/2'

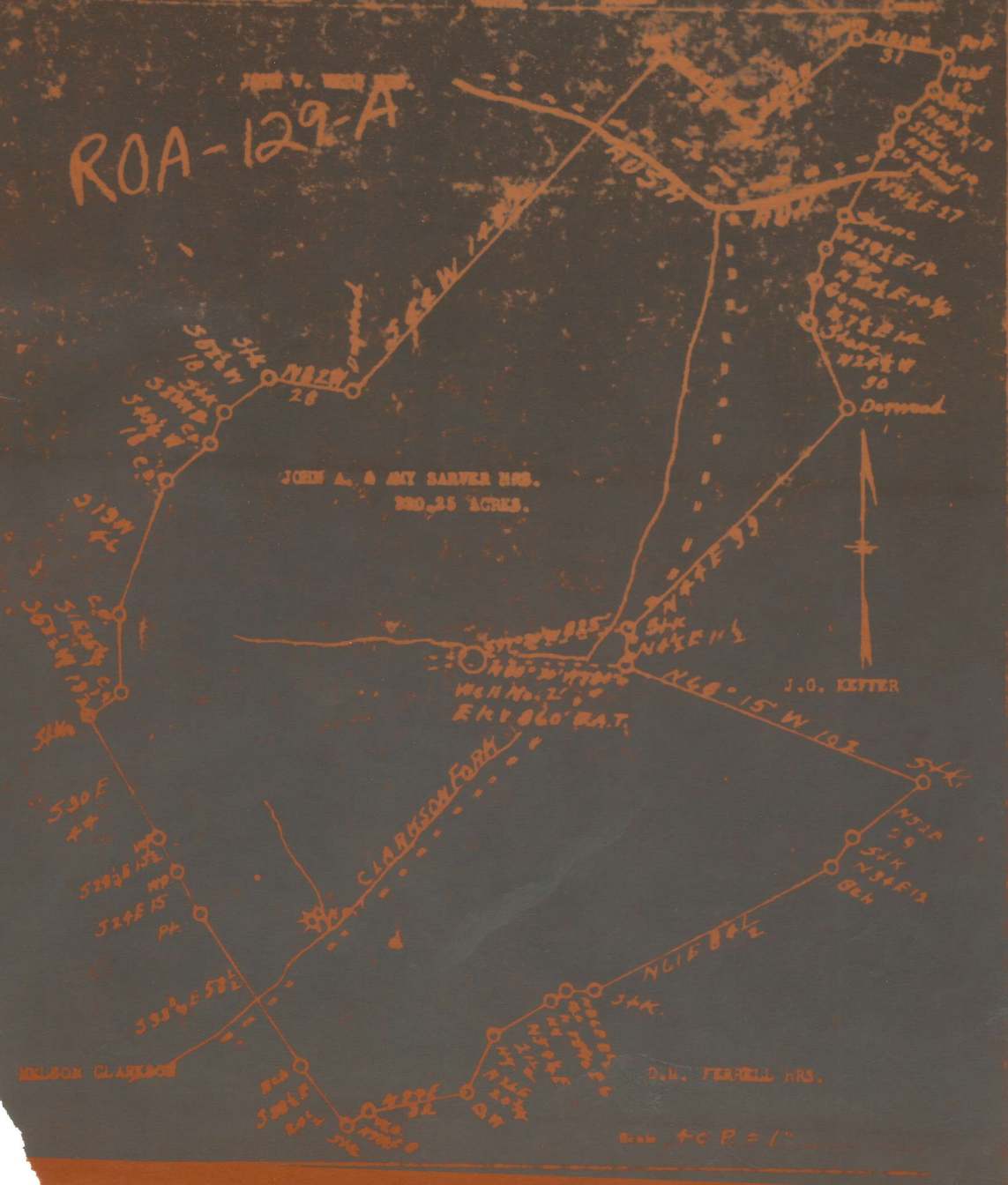
County Roane

District Smithfield

WELL LOCATION MAP

File No. 087-129A

ROA-129-A



SARVER, J. A. & AMY, HEIRS, NO. 2.

Roa-129-A.

(Clarison
Fork
320 acres)

By H. W. Bowers & B. F. Jackson.

Smithfield Dist.

See microfilm for Plat

Well record on microfilm

Elev = 860'

Well was not shut
Well was dry

B D 620-750
620 S 770-895
salt sand 1360-1542
maxon S 1560-1580
Little Lime 1635-1675
Pencil cave 1675-1680
Big Lime 1680-1805
B I 1825-1833
TD = 1833

f 19314

f 19312

f 19312