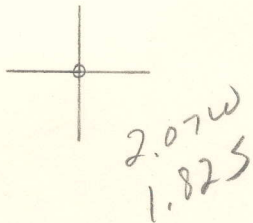


LATITUDE 38°47'30"

LONGITUDE 81°08'18"



T'S OGIS topo location

7.5' loc _____ 15' loc _____
 _____ (calc.) _____

Company _____

Farm _____

Quad Pencil 7 1/2'

County Roane

District Curtis

WELL LOCATION MAP

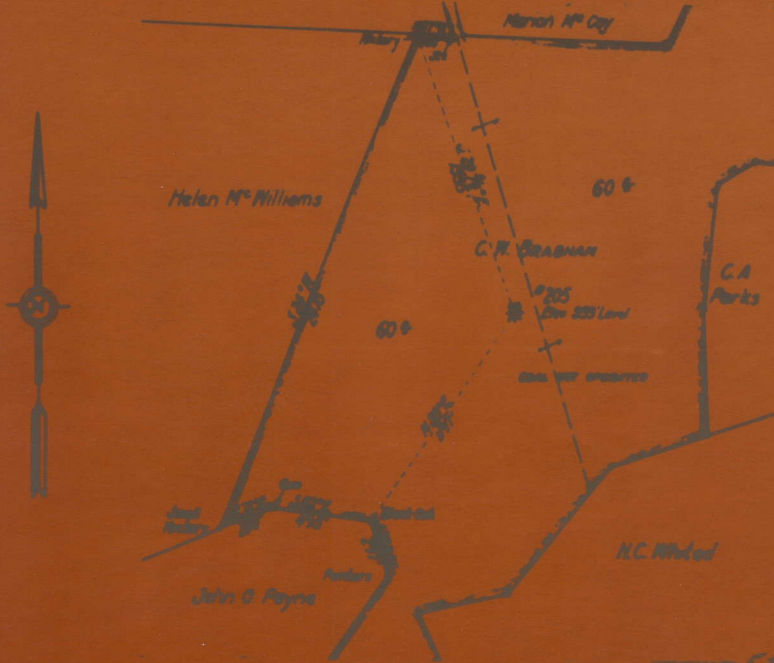
File No. 087-105A

I, the undersigned, hereby certify that this map is correct and shows all the information to the best of my knowledge and belief, required by the Oil and Gas Section of the Mining Laws of West Virginia.

G. A. Cunningham
Engineer

Acknowledged before me, a Notary Public of Kanawha County, W. Va.
this 18 day of January 1935.

My Commission expires May 2, 1940.



C.W. Brabham
Well No. 205
Curtis District
Roane County, W. Va.
Jan. 18, 1935.

ROA-105-A

UNITED FUEL GAS CO.

MAP SHOWING

WELL TO BE ABANDONED

SCALE - 1 INCH = 660 FEET

100 : 9 1935

105A

Curtis District, Roane County, W. Va.

By United Fuel Gas Co., Charleston, W. Va.

On 120 acres, surface and mineral rights owned by C. W. Brabham
et al., Gay, W. Va.

Drilled previous to June 1, 1929.

Elevation, 939' L.

13" conductor, 16'; 10" casing, 725'; 6-5/8", 2143'.

Bottom hole packer, 6-5/8 x 8 1/4, set at 2143'.

Anchor packer, 2 x 5-3/16, set at 2108'.

Casing perforated at 2556 and 2515'.

No coal was encountered.

Abandonment reported to Dept. of Mines Jan. 18, 1935.

Well was not shot. ~~Marion~~

	Top.	Bottom.	Thickness.
Red and white slate	0	- 35	35
Lime shells	35	- 45	10
Sand	45	- 55	10
Red rock	55	- 100	45
White slate	100	- 115	15
Red rock	115	- 145	30
White slate	145	- 200	55
Red rock	200	- 240	40
Slate and shells	240	- 305	65
Lime	305	- 320	15
Red rock	320	- 350	30
Lime	350	- 360	10
Slate and sand	360	- 380	20
Red rock	380	- 420	40
White slate	420	- 450	30
Red rock	450	- 470	20
Slate and shells	470	- 490	20
Pittsburgh Sand	490	- 600	110
Slate, shells, and sand	600	- 710	110
Pink cave	710	- 720	10
Shells	720	- 725	5
Slate and shells	725	- 760	35
Red rock	760	- 835	175
Blue slate and shells	835	- 910	75
Red rock	910	- 955	45
Sand	955	- 1025	70
Blue slate and shells	1025	- 1050	25
Sand and lime	1050	- 1100	50
slate	1100	- 1120	20
Big Dunkard Sand	1120	- 1230	110
Slate and sand	1230	- 1385	155
Slate, sand, and shells (water, 1480')	1385	- 1685	300
Lime	1685	- 1702	17
Salt Sand (1st gas, 1702'; 2nd gas, 1722')	1702	- 1727	25
Original total depth		1727	
Salt Sand (water, 1769' and 1809')	1702	- 2015	313
Big Lime	2015	- 2123	108
Big Injun Sand	2123	- 2133	10
Berea Sand (gas, 2506&2509')	2497	- 2514	17
Total depth		2556	

MARY M. (C. W.) BRABHAM NO. 205 WELL.

Curtis District, Roane County, W. Va.
By United Fuel Gas Co.
On 114 (120) acres.
Elevation, 939' L.
Abandoned Jan. 18, 1935.
Gas well.
From Heck's notes.

RoA-105-A

	Top.	Bottom.
Salt Sand (gas, 1702 and 1722') (salt water, 1769 and 1809')	1702	2015
Big Lime	2015	2123
Big Injun Sand	2123	2133
Berea Sand (gas, 2506 and 2509')(El. 1558')	2497	2514
Total depth		2556