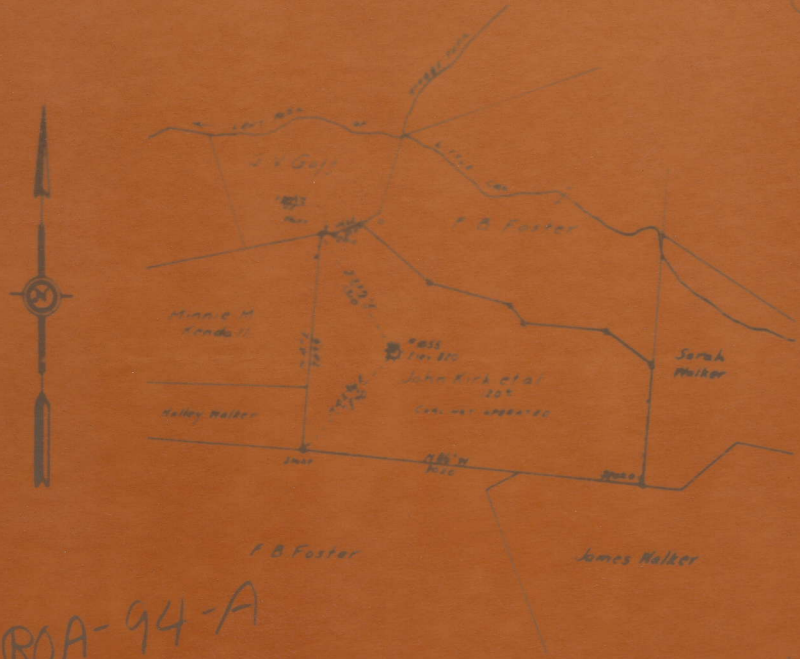


I, the undersigned, hereby certify that this map is correct and shows all the facts in relation to the facts of my knowledge and belief, required by the Oil and Gas Section of the Mining Laws of West Virginia.

L. A. Cunningham
Engineer

Acknowledged before me, a Notary Public of Roane County, W. Va.
this 27 day of September 1934.

My Commission expires 2/28/35 D. C. Jany



ROA-94-A

John Kirk et al
Well No. 1055
Spencer District
Roane County, W. Va.
Sept. 24, 1934.

SEP 28 1934

UNITED FUEL GAS CO.
MAP SHOWING
WELL TO BE ABANDONED
SCALE - 1 INCH = 1320 FEET

Spencer District, Roane County, W. Va.

By United Fuel Gas Co., Charleston, W. Va.

(Hedges Farm)

On 120 acres, surface and mineral rights owned by John Kirk et al.,
Spencer, W. Va.

Drilled previous to June 1, 1929.

Elevation, 820' B.

13" conductor, 16'; 6-5/8" casing, 1826'.

Callanan packer, 2 x 6-5/8, set at 1859'.

Casing perforated at 2382'.

No coal was encountered.

Abandonment reported to Dept. of Mines Sept. 27, 1934.

Well was shot at 1952-1960' and in Berea Sand (no record of depth).

No record of water.

Gas well.

	Top.	Bottom.	Thickness.
Pittsburgh Sand	513	- 588	75
Little Dunkard Sand	827	- 867	40
Big Dunkard Sand	977	- 1082	105
Gas Sand	1125	- 1235	110
Salt Sand	1600	- 1787	187
Little Lime	1787	- 1818	31
Pencil Cave	1818	- 1822	4
Big Lime (gas, 1892')	1822	- 1942	120
Big Injun Sand (gas, 1952')	1942	- 1972	30
Shells	2146	- 2158	12
Berea Sand	2357	- 2374	17
Total depth		2410	

A. E. KENNEY AND JOHN KIRK NO. 1 WELL.
(JOHN KIRK NO. 1055) WELL.

94A

Spencer District, Roane County, W. Va.
By United Fuel Gas Co.
On 80+ (120?) acres.
Keller Map I-22.
Elevation, 820' B. (For U.F.G.Co.No.1055 on John Kirk).

S. P. - J. S. Kirk. T. D. 2401'. 2,800,000 cu. ft. gas. Berea Sand.
U. F. G. Co. No. 541. Completed July 30, 1913.
THIS IS ANOTHER WELL.

U. F. G. Co. abandonment notice Sept. 27, 1934, gives record for
John Kirk No. 1055, 120 acres. Elevation above for No. 1055.
Record below also for No. 1055.

From Heck's notes.

	Top.	Bottom.
Salt Sand	1600	- 1787
Little Lime	1787	- 1818
Pencil Cave	1818	- 1822
Big Lime (gas, 1892')	1822	- 1942
Big Injun Sand (gas, 1952')	1942	- 1972
Shells	2146	- 2158
Berea Sand (gas)	2357	- 2374
Total depth		2410