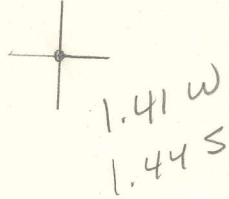


LATITUDE 38°50'00"

LONGITUDE 81°17'30"



7'5 OGIS topo location

7.5' loc _____ 15' loc _____
 _____ (calc.) _____

Company _____

Farm _____

Quad Spencer 7 1/2'

County Roane

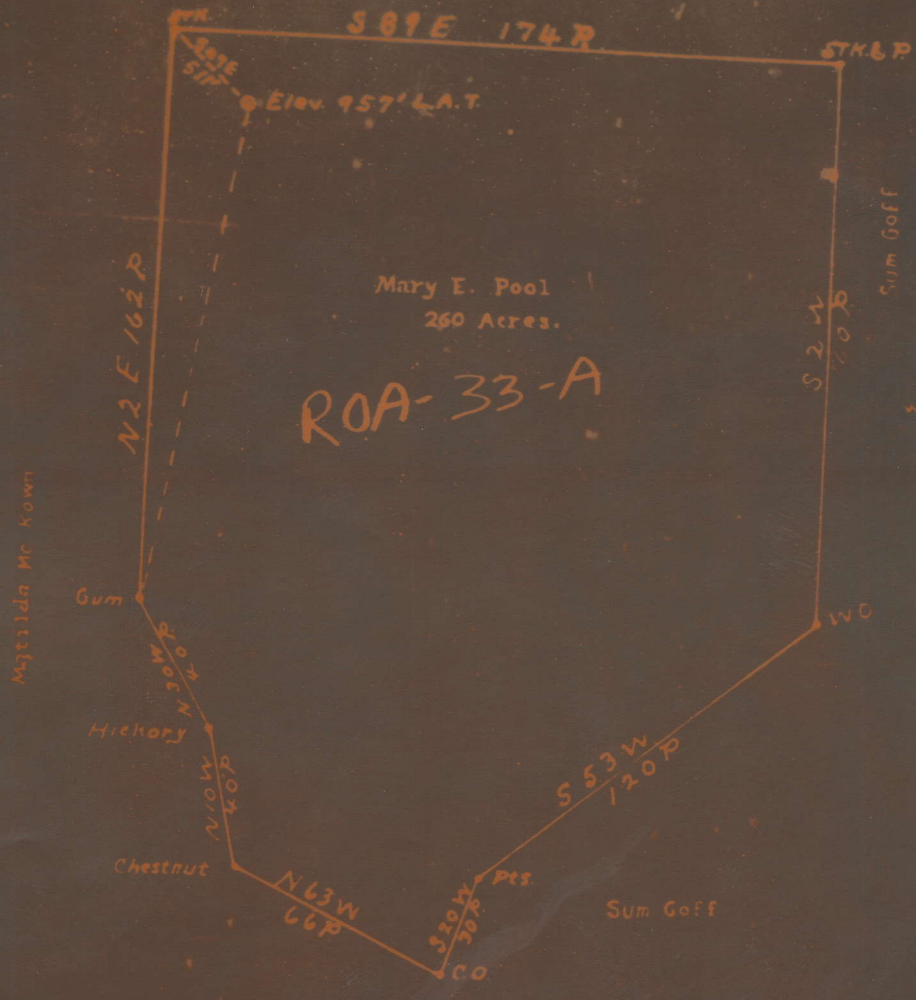
District Spencer

WELL LOCATION MAP

File No. 087-33A

Plat of location of Well No. 2 of Mc Intosh, 2 1/2 in., and
Gris on the Mary E. Pool Farm, consisting of 260 Acres,
Situated on the waters of Little Creek, Spencer District,
Roane County, to be abandoned.

T.L. Bartlett
Robert Rvanion



I, the undersigned hereby certify that this map is correct
and shows all of the information to the best of my knowledge
and belief, required by the Oil and Gas Section of the Mining
Laws of West Virginia

L.F. Dye
Engineer

Acknowledged before me a Notary Public this 15th day of

33A

Spencer
District, Roane County, W. Va.
 By McIntosh and Grimm, Spencer, W. Va.
 Well was shot at 2130'.
 Salt water at 1805.
 Oil well.
 Completion data sheet to Dept. of Mines not dated; filed 1934?
 Preliminary data sheet missing.
 Elev. - 957'

7

	Top.	Bottom.	Thickness.
Conductor	0	15	15
Red rock, soft	15	30	15
Sand, gray, hard	30	50	20
Red rock, soft	50	126	76
Sand, gray, hard	126	201	75
Slate and shells, gray, soft	201	231	30
Red rock, soft	231	252	21
Sand, gray, hard	252	290	38
Lime shells, gray, hard	290	320	30
Red rock, soft	320	391	71
Lime, blue, hard	391	405	14
Red rock, soft	405	417	12
Lime shells, gray, hard	417	423	6
Red rock-shells, soft	423	435	12
Slate and shells, gray, soft	435	465	30
Red rock, soft	465	480	15
Sand, gray, hard	480	510	30
Slate and shells, gray, soft	510	516	6
Lime, blue, hard	516	525	9
Red rock, soft	525	534	9
Lime shells, gray, hard	534	560	26
Red rock, soft	560	574	14
Slate and shells, black, soft	574	678	104
Sand, gray, hard	678	700	22
Slate, black, soft	700	720	20
Red rock, soft	720	735	15
Pittsburgh Sand, gray, hard	735	784	49
Red rock, soft	784	800	16
Lime shells, gray, hard	800	820	20
Red rock, soft	820	850	30
Slate and shells, black, soft	850	940	90
Pink rock cave, hard	940	945	5
Lime shells, gray, hard	945	955	10
Red rock, soft	955	965	10
Lime shells, gray, hard	965	985	20
Red rock-shells, soft	985	998	13
Slate-lime shells, soft	998	1063	65
Pink rock cave, hard	1063	1068	5
Slate-lime, grayw, hard	1068	1085	17
Big Dunkard Sand, gray, hard	1085	1190	105
Slate, black, soft	1190	1200	10
Sand, gray, hard	1200	1255	55
Slate-lime shells, soft	1255	1350	95
Sand, gray, hard	1350	1420	70
Slate, black, soft	1420	1450	30
Lime, gray, hard	1450	1478	28
Slate and broken sand, soft	1478	1480	2

(OVER)

POOL NO. 2 WELL (Continued).

	Top.	Bottom.	Thickness.
Sand, gray, hard	1480	- 1515	35
Slate, black, soft	1515	- 1525	10
Sand, gray, hard	1525	- 1550	25
Slate, black, hard	1550	- 1575	25
Sand, gray, hard	1575	- 1620	45
Slate, black, soft	1620	- 1670	50
Sand, gray, hard	1670	- 1690	20
Slate, black, soft	1690	- 1730	40
Salt Sand, gray, hard (water)	1730	- 1897	267
Maxton Sand, gray, hard	1897	- 1943	46
Little Lime, gray, hard	1943	- 1963	20
Sand, gray, hard	1963	- 1988	25
Big Lime, gray, hard	1988	- 2084	96
Keener Sand, gray, hard	2084	- 2107	23
Slate, black, soft	2107	- 2121	14
Big Injun Sand, gray, hard	2121	- 2131	10
(oil pay, 2122-2130)			
Slate, black, soft, to bottom	2131	- 2135	4