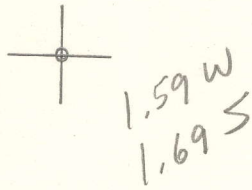


LATITUDE 38°57'30"

LONGITUDE 80°58'18"



7.5 OGIS topo location

7.5' loc _____ 15' loc _____
 _____ (calc.) _____

Company _____

Farm _____

Quad Reedy 7 1/2'

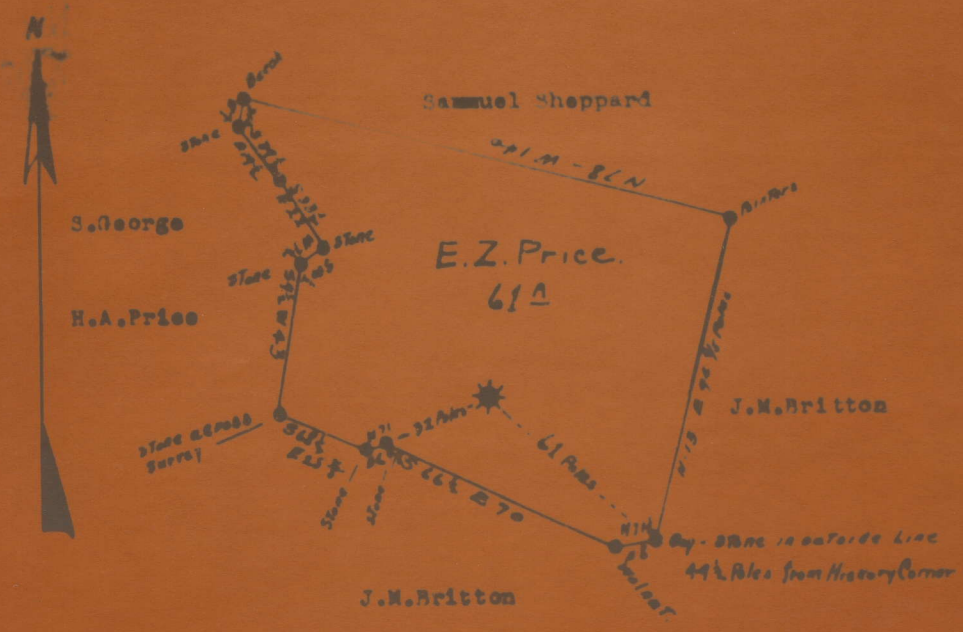
County Roane

District Reedy

WELL LOCATION MAP

File No. 087-31A

all No. 1 of the ROCK OIL COMPANY of
 consisting of 61 acres located in
 Boone County.



ROA-31-A

I, the undersigned, hereby certify that this map is correct and shows all the information to the best of my knowledge and belief, required by the oil and gas section of the Mining Laws of West Virginia.

H.A. Heck
 Land Agent.

Acknowledged before me a notary public this 15th day of August, 1931.

H. M. Neely
 Notary Public Boone County,
 My Commission Expires Nov. 22, 1934.

31A

Reedy District, Roane County, W. Va.

By The Heck Oil Co., Spencer, W. Va.

On 61 acres, on waters of Cains Run, surface owned by H. A. Price,

R. F. D., Reedy, W. Va., and mineral rights by H. A. Price et al.,

R. F. D., Reedy, W. Va.

Drilled in 1923.

Elevation, 788' L.

16" conductor, 13'; 10" casing, 775'; 8 $\frac{1}{4}$ ", 1017'; 6-5/8", 1920 $\frac{1}{2}$ '.

6-5/8" lead show at bottom of casing.

6 $\frac{1}{4}$ " x 3" gas anchor packer, set at 2060' 11".

Showing of coal at 683'.

No liner used.

Abandonment reported to Dept. of Mines Aug. 15, 1931.

Well was not shot.

Fresh water at 18'; salt water at 1141' and 1750'.

Gas well.

	Top.	Bottom.
Sand	210	240
Slate	240	300
Sand	300	320
Red rock	320	350
Lime	350	360
Red rock	360	400
White slate	400	410
Lime	410	450
Red rock	450	455
Lime	455	470
1st Pittsburgh Sand	470	489
Slate	489	505
Red rock	505	510
White slate	510	517
No record	517	522
2nd Pittsburgh Sand	522	551
Slate	551	577
Sand	577	587
Slate	587	592
Red rock	592	615
Slate	615	683
Coal formation (does not show in other wells drilled in immediate vicinity)	683	686
slate	686	700
Red rock	700	706
Slate	706	712
Red rock	712	728
Sand	728	752
Slate	752	757
Red rock	757	773
Shell	773	790
Red rock	790	820
Slate	820	835
Red rock	835	845
Slate	845	875
Lime	875	895
Red rock	895	940
Little Dunkard Sand	940	992
Black slate	992	1008

(OVER)

E. Z. PRICE NO. 1 WELL (Continued).

	Top.	Bottom.
Big Dunkard Sand	1008	1104
Slate and shells	1104	1114
Gas Sand	1114	1148
Slate	1148	1160
Lime	1160	1200
Slate	1200	1205
Sand	1205	1232
Black slate	1232	1280
Sand	1280	1322
Slate	1322	1410
Sand	1410	1446
Slate	1446	1495
Sand	1495	1585
Slate	1585	1660
1st Salt Sand	1660	1685
Slate	1685	1704
2nd Salt Sand	1704	1800
Slate	1800	1816
Maxton Sand	1816	1919
Big Lime (SLM)	1919	1926
Slate	1926	1930
Bottom Big Lime	1930	1957
Big Injun Sand	1957	2022
Slate	2022	2037
Shell	2037	2039
Slate	2039	2055
Big black lime shell (SLM)	2055	2073
Slate and shells	2073	2337
Brown shale	2337	2349 ¹ / ₂
Berea Grit (SLM)	2349 ¹ / ₂	2354 ¹ / ₂
Blue lime, to bottom	2354 ¹ / ₂	2358 ¹ / ₂

1008 - 1104	Big Dunkard Sand
1104 - 1114	Slate and shells
1114 - 1148	Gas Sand
1148 - 1160	Slate
1160 - 1200	Lime
1200 - 1205	Slate
1205 - 1232	Sand
1232 - 1280	Black slate
1280 - 1322	Sand
1322 - 1410	Slate
1410 - 1446	Sand
1446 - 1495	Slate
1495 - 1585	Sand
1585 - 1660	Slate
1660 - 1685	1st Salt Sand
1685 - 1704	Slate
1704 - 1800	2nd Salt Sand
1800 - 1816	Slate
1816 - 1919	Maxton Sand
1919 - 1926	Big Lime (SLM)
1926 - 1930	Slate
1930 - 1957	Bottom Big Lime
1957 - 2022	Big Injun Sand
2022 - 2037	Slate
2037 - 2039	Shell
2039 - 2055	Slate
2055 - 2073	Big black lime shell (SLM)
2073 - 2337	Slate and shells
2337 - 2349 ¹ / ₂	Brown shale
2349 ¹ / ₂ - 2354 ¹ / ₂	Berea Grit (SLM)
2354 ¹ / ₂ - 2358 ¹ / ₂	Blue lime, to bottom