

LATITUDE

38° 35'

210 07 30"

• ← 7 1/2' loc
AV 8/92

LONGITUDE

7'5 OGIS topo location

7.5' loc	<u>.58 S</u>	15' loc	_____
	<u>.89 W</u>	(calc.)	_____

Company _____

Farm DD Stocky 75

Quad Newton

County _____

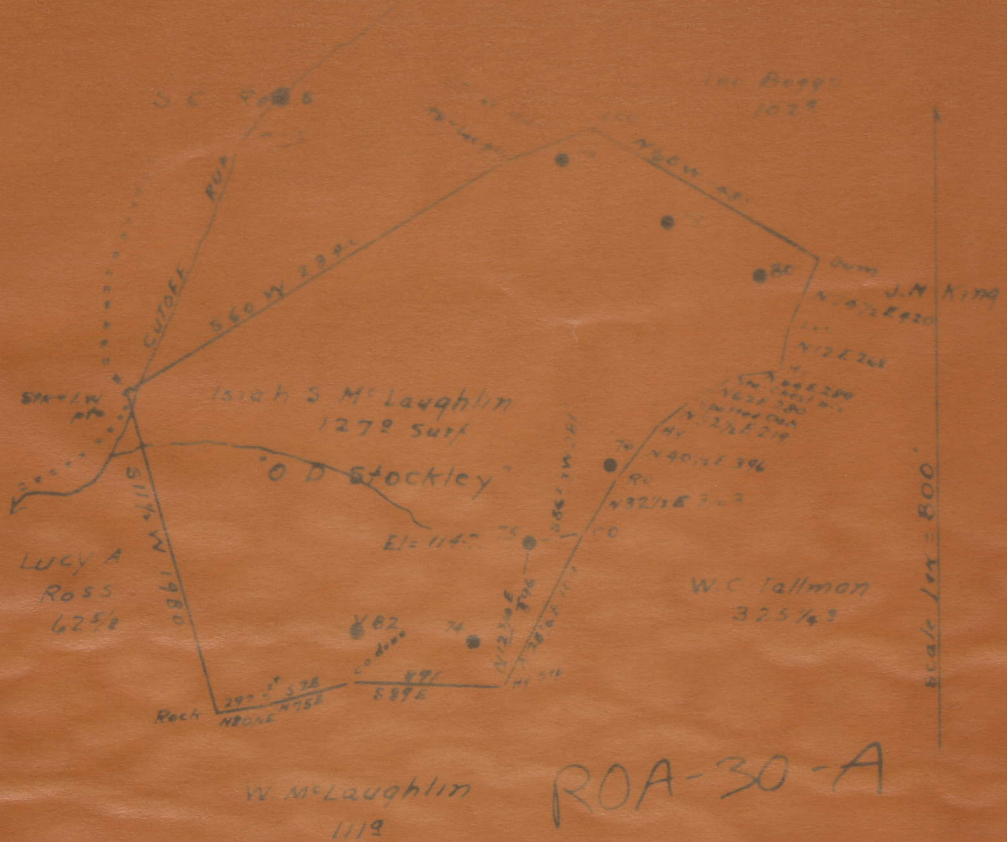
District Gearg

WELL LOCATION MAP

File No. 87-30030

30A

6-6 (198)



ENGINEER'S CERTIFICATE

I, the undersigned, hereby certify that this map is true and correct and shows all the information to the best of my knowledge and belief as required by the oil and gas section of the mining laws of West Virginia.

Frank Ferguson
Engineer

Acknowledged before me a Notary Public this 5th day of September, 1931.
My commission expires March 30th, 1935.

John F. Wigman
Notary Public

JOHN F. WIGMAN, NOTARY PUBLIC
MY COMMISSION EXPIRES MARCH 30, 1935

Geary District, Roane County, W. Va.

By South Penn Oil Co., P. O. Drawer 1255, Pittsburgh, Pa. 30A

On 127 acres, surface owned by I. S. McLaughlin, Wanego, W. Va.,
and mineral rights by Olivia D. Stockly, George J. Stockly,
Atty. in fact, 24 Broad St., New York, N. Y.

Elevation, 1147' L.

16' conductor; 8 $\frac{1}{2}$ " casing, 475'; 6-5/8", 1976' 10".

No coal was encountered.

Abandonment reported to Dept. of Mines Sept. 5, 1931.

Well was shot in Big Injun Sand.

Salt water at 1555'. Oil well.

	Top.	Bottom.	Thickness.
Conductor	0	- 16	16
Clay	0	- 10	10
Red mud	10	- 100	90
Slate	100	- 125	25
Red rock	125	- 200	75
Sand	200	- 230	30
Slate and shells	230	- 440	210
Sand (8 $\frac{1}{2}$ " casing, 473')	440	- 820	380
Black slate	820	- 860	40
Sand	860	- 875	15
Slate	875	- 885	10
Sand	885	- 990	105
Slate and lime shells	990	- 1030	40
Sand	1030	- 1055	25
Slate and lime	1055	- 1140	85
Sand	1140	- 1155	15
Slate and lime	1155	- 1165	10
Sand	1165	- 1195	30
Lime and slate	1195	- 1300	105
Sandy lime	1300	- 1330	30
Lime	1330	- 1340	10
Gas Sand	1340	- 1415	75
Black slate	1415	- 1420	5
Sand	1420	- 1460	40
Lime	1460	- 1490	30
Salt Sand (hole full salt water, 1555')	1490	- 1684	194
Black slate	1684	- 1694	10
Salt Sand	1694	- 1805	111
Slate	1805	- 1808	3
Lime	1808	- 1820	12
Red rock	1820	- 1830	10
Lime	1830	- 1835	5
Red rock	1835	- 1840	5
White slate	1840	- 1879	39
Little Lime	1879	- 1912	33
White slate	1912	- 1917	5
Blue Monday Sand	1917	- 1950	33
Big Lime (6-5/8" casing, 1958': (oil show, 2025')	1950	- 2070	120
Big Injun Sand (oil, 2078-2083')	2070	- 2092	22
Slate, to bottom	2092	- 2102	10

OD Stoddy 75
ALLEN, F. E., NO. 75.

Roa-30-A.

By South Penn Oil Co.

Geary Dist.