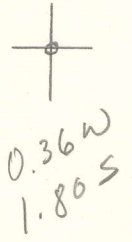


LATITUDE 38° 45' 00"

LONGITUDE 81° 17' 30"



7'5 OGIS topo location

7.5' loc \_\_\_\_\_ 15' loc \_\_\_\_\_  
 \_\_\_\_\_ (calc.) \_\_\_\_\_

Company \_\_\_\_\_

Farm \_\_\_\_\_

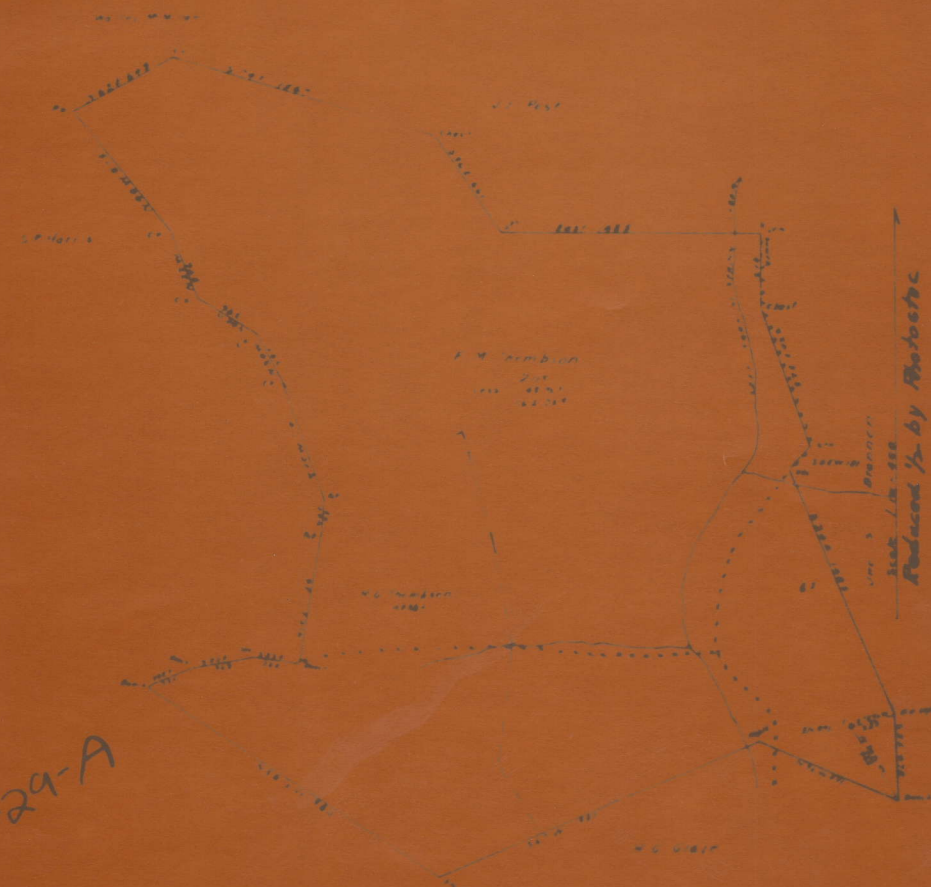
Quad Looneyville 7 1/2'

County Round

District Smithfield

WELL LOCATION MAP

File No. 087-294



ROA-29-A

ENGINEER'S CERTIFICATE

I, the undersigned, hereby certify that this map is true and correct, and shows all the information to the best of my knowledge and belief as required by the oil and gas section of the mining laws of West Virginia.

See microfilm for plot

29A

Smithfield District, Roane County, W. Va.  
 By South Penn Oil Co., P. O. Drawer 1255, Pittsburgh, Pa.  
 On 162.25 acres, surface owned by Jane Ferrell, Walnut Grove,  
 W. Va., and mineral rights by F. M. Thompson, Spencer, W. Va.  
 Elevation, 971' L.  
 16' conductor; 10" casing, 200'; 8 1/2", 898'; 6-5/8", 1922' 4".  
 No coal was encountered.  
 Abandonment reported to Dept. of Mines July 9, 1931.  
 Well was shot in Big Injun Sand.  
 Salt water at 1640-1667'.  
 Producing hole. (Oil well).

|                                  | Top. | Bottom. |
|----------------------------------|------|---------|
| Conductor                        | 0    | 16      |
| Slate                            | 16   | 285     |
| Sand                             | 285  | 305     |
| Slate                            | 305  | 340     |
| Sand                             | 340  | 415     |
| Slate                            | 415  | 445     |
| Sand                             | 445  | 500     |
| Slate                            | 500  | 830     |
| Little Dunkard Sand              | 830  | 870     |
| Slate                            | 870  | 909     |
| Big Dunkard Sand                 | 909  | 1030    |
| Slate                            | 1030 | 1045    |
| Sand                             | 1045 | 1075    |
| Slate                            | 1075 | 1115    |
| Sand                             | 1115 | 1260    |
| Slate                            | 1260 | 1320    |
| Sand                             | 1320 | 1450    |
| Slate                            | 1450 | 1587    |
| Salt Sand (water, 1640-1667')    | 1587 | 1787    |
| Maxton Sand                      | 1787 | 1891    |
| Little Lime                      | 1891 | 1916    |
| Pencil Cave                      | 1916 | 1923    |
| Big Lime                         | 1923 | 2041    |
| Big Injun Sand (oil, 2055-2075') | 2041 | 2077    |
| Slate, to bottom                 | 2077 | 2078    |