

West Virginia Department of Environmental Protection
Office of Oil & Gas
WELL LOCATION FORM: GPS

API: 47- 087 - 2436 P WELL NO: No.5
FARM NAME: Chambers Heirs
RESPONSIBLE PARTY NAME: East Resources, Inc.
COUNTY: Roane DISTRICT: Smithfield
QUADRANGLE: Looneyville 7.5'
SURFACE OWNER: W&B Farms Inc.
ROYALTY OWNER: East Resources, Inc. et al.
UTM GPS NORTHING: 4,288,541
UTM GPS EASTING: 475,759 GPS ELEVATION: 328 m.

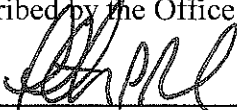
The Responsible Party named above has chosen to submit GPS coordinates in lieu of preparing a new well location plat for a plugging permit on the above well. The Office of Oil & Gas will not accept GPS coordinates that do not meet the following requirements:

1. Datum: NAD 1983, Zone:17 North, Coordinate Units: meters, Altitude: height above mean sea level (MSL) - meters.
2. Accuracy to Datum - 3.05 meters
3. Data Collection Method:

Survey Grade GPS Post Processed Differential
Real-Time Differential
Mapping Grade GPS Post Processed Differential
Real-Time Differential

PROCESSED
OIL & GAS
AUG 20 2012
West Virginia Department of
Environmental Protection

I the undersigned, hereby certify this data is correct to the best of my knowledge and belief and shows all the information required by law and the regulations issued and prescribed by the Office of Oil and Gas.


Signature Timothy P. Roush

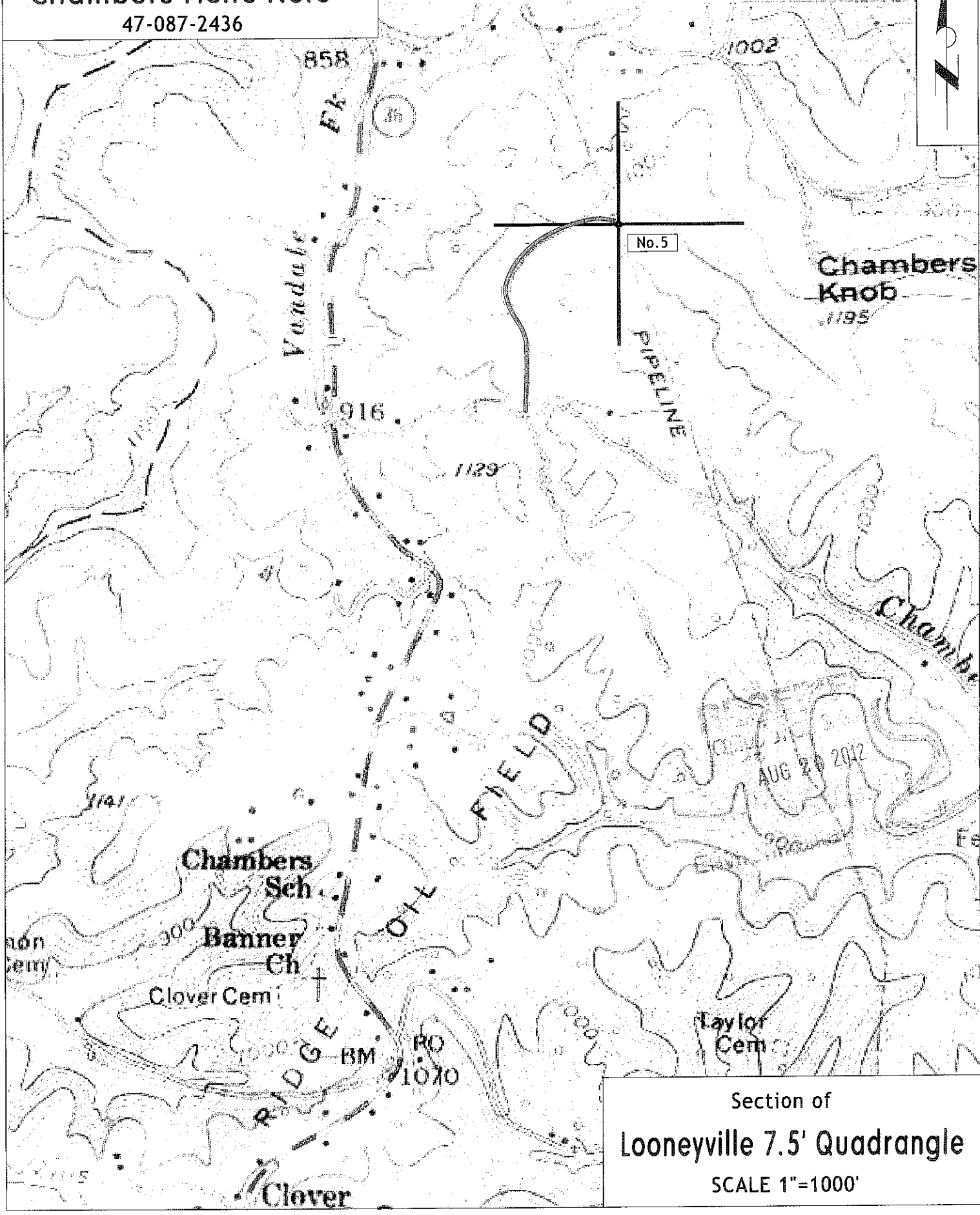
Professional Surveyor
Title

July 18, 2012
Date

SUBJECT WELL
Chambers Heirs No. 5
47-087-2436

PENCER N. & M. 1 920 000 FEET

87.02436P



Section of
Looneyville 7.5' Quadrangle
SCALE 1"=1000'