

WW-7
8-30-06



West Virginia Department of Environmental Protection
Office of Oil and Gas
WELL LOCATION FORM: GPS

API: 47-087-01937 WELL NO.: Potato Run #2

FARM NAME: Potato Run

RESPONSIBLE PARTY NAME: Steve Duckworth Well Service

COUNTY: Roane DISTRICT: Walton

QUADRANGLE: Clio 7.5'

SURFACE OWNER: Natural Steam Energy, Inc.

ROYALTY OWNER: Chesapeake Appalachia LLC

UTM GPS NORTHING: 4269262.4

UTM GPS EASTING: 469067.5 GPS ELEVATION: 233.8

The Responsible Party named above has chosen to submit GPS coordinates in lieu of preparing a new well location plat for a plugging permit or assigned API number on the above well. The Office of Oil and Gas will not accept GPS coordinates that do not meet the following requirements:

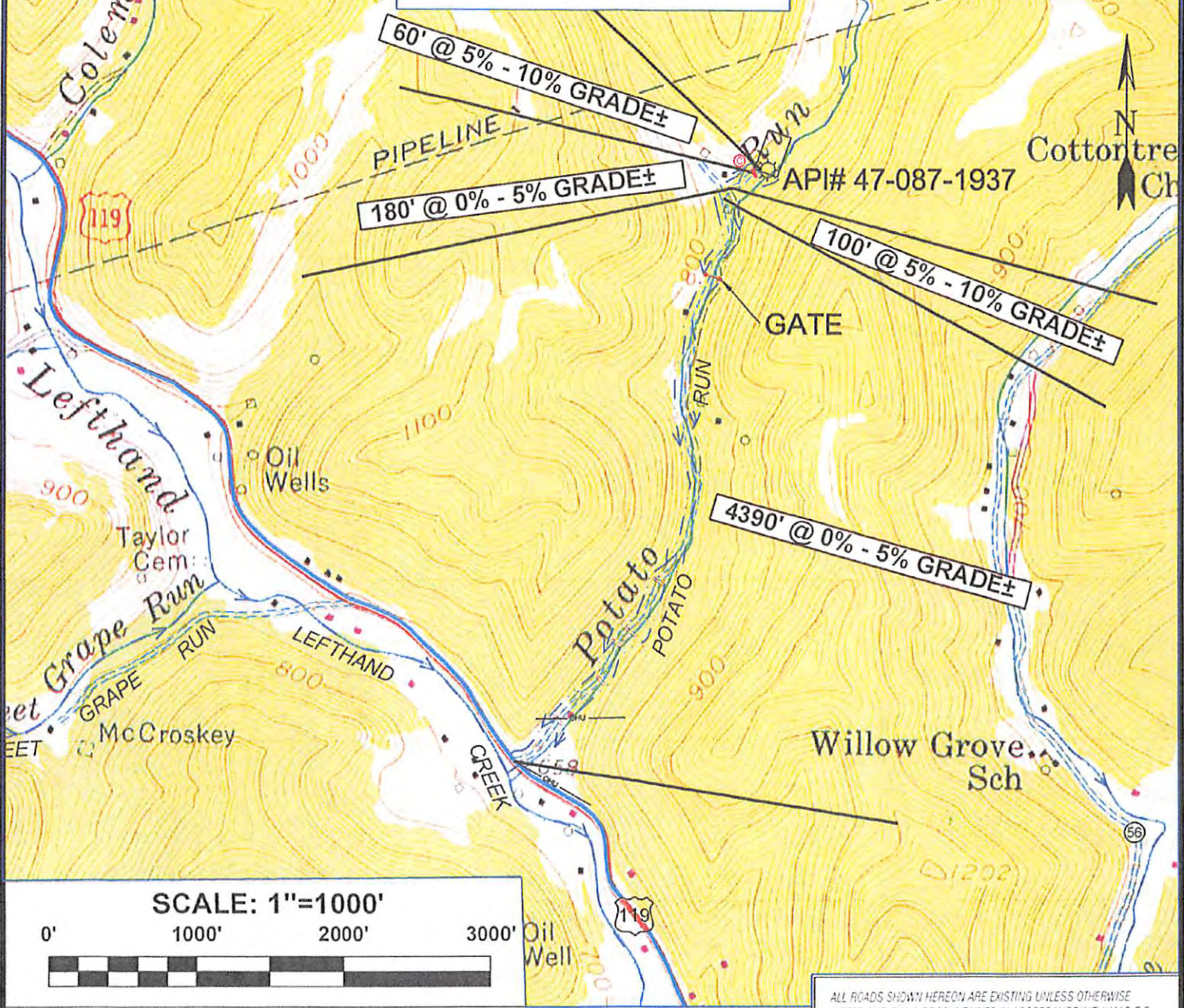
- Datum: NAD 1983, Zone: 17 North, Coordinate Units: meters, Altitude: height above mean sea level (MSL) – meters.
- Accuracy to Datum – 3.05 meters
- Data Collection Method:
Survey grade GPS ____: Post Processed Differential ____
Real-Time Differential ____
Mapping Grade GPS X: Post Processed Differential X
Real-Time Differential ____

4. Letter size copy of the topography map showing the well location.
I the undersigned, hereby certify this data is correct to the best of my knowledge and belief and shows all the information required by law and the regulations issued and prescribed by the Office of Oil and Gas.

Math J. Helton Project Manager 12/13/2017
Signature Title Date

RECEIVED
Office of Oil and Gas

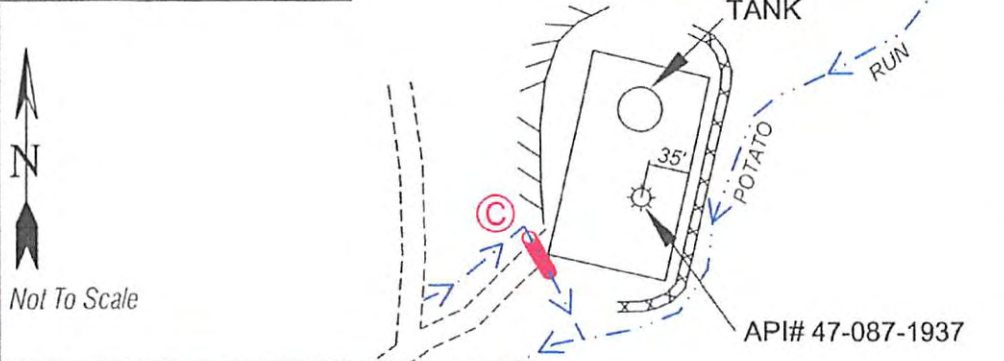
DEC 21 2017



SCALE: 1"=1000'



Detail Sketch for API# 47-087-1937



ALL ROADS SHOWN HEREON ARE EXISTING UNLESS OTHERWISE NOTED AND SHALL BE MAINTAINED IN ACCORDANCE WITH WV D.E.P. OIL AND GAS BMP MANUAL ENTRIES AT COUNTY STATE ROADS SHALL BE MAINTAINED IN ACCORDANCE WITH WV D.O.T. REGULATION. SEPARATE PERMITS MAY BE REQUIRED BY THE D.O.T.

SEDIMENT BASINS (TRAPS) AND APPROPRIATE EROSION CONTROL BARRIERS ARE TO BE CONSTRUCTED AT ALL CULVERT AND CROSS DRAIN INLETS AND OUTLETS AS REQUIRED IN THE WV D.E.P. OIL AND GAS BMP MANUAL. FIELD CONDITIONS (ROCK OUTCROPS AND BEDROCK) MAY PROHIBIT INLET TRAPS BEING INSTALLED. WHEN THESE CONDITIONS EXIST ADDITIONAL EROSION CONTROL MEASURES SHALL BE EVALUATED AND UTILIZED AS NEEDED.

EARTHWORK CONTRACTORS ARE RESPONSIBLE FOR NOTIFICATION TO THE OPERATOR AND INSPECTOR PRIOR TO ANY DEVIATION FROM THIS PLAN.

TEMPORARY SEED & MULCH ALL SLOPES AFTER CONSTRUCTION OF LOCATION.

- EXISTING CULVERT
- PROPOSED CULVERT 15' MIN UNLESS OTHERWISE NOTED
- RECEIVED BY OPERATOR
- CROSSING OF Oil and Gas
- APPROXIMATE LIMITS OF DISTURBANCE

DEC 21 2017



DRAWN BY	FILE NO.	DATE	CADD FILE:
MGF	8759	12-13-17	8759REC.dwg

TOPO SECTIONS OF CLIO 7.5' TOPO QUADRANGLE