

Minimum Error of Closure 1' IN 200'

Source of Elevation FORKS ROAD N.W. CORNER 725.00

Fracture
 New Location Revised
 Drill Deeper
 Abandonment

I, the undersigned, hereby certify that this map is correct to the best of my knowledge and belief and shows all the information required by paragraph 6 of the rules and regulations of the oil and gas section of the mining laws of West Virginia.

Signed: L. J. Dyer
 Squares: N S E W

Company BLAKE HAMMACK
 Address 2606A CONNER DRIVE CHARLESTON, W.VA.
 Farm C. L. DAUGHERTY - (Min.)
 Tract _____ Acres 11.75 Lease No. _____
 Well (Farm) No. 1 Serial No. _____
 Elevation (Spirit Level) 805.79
 Quadrangle WALTON C
 County ROANE District WALTON
 Engineer L. J. Dyer
 Engineer's Registration No. 804
 File No. _____ Drawing No. _____
 Date 10-8-70 Scale 1" = 200'

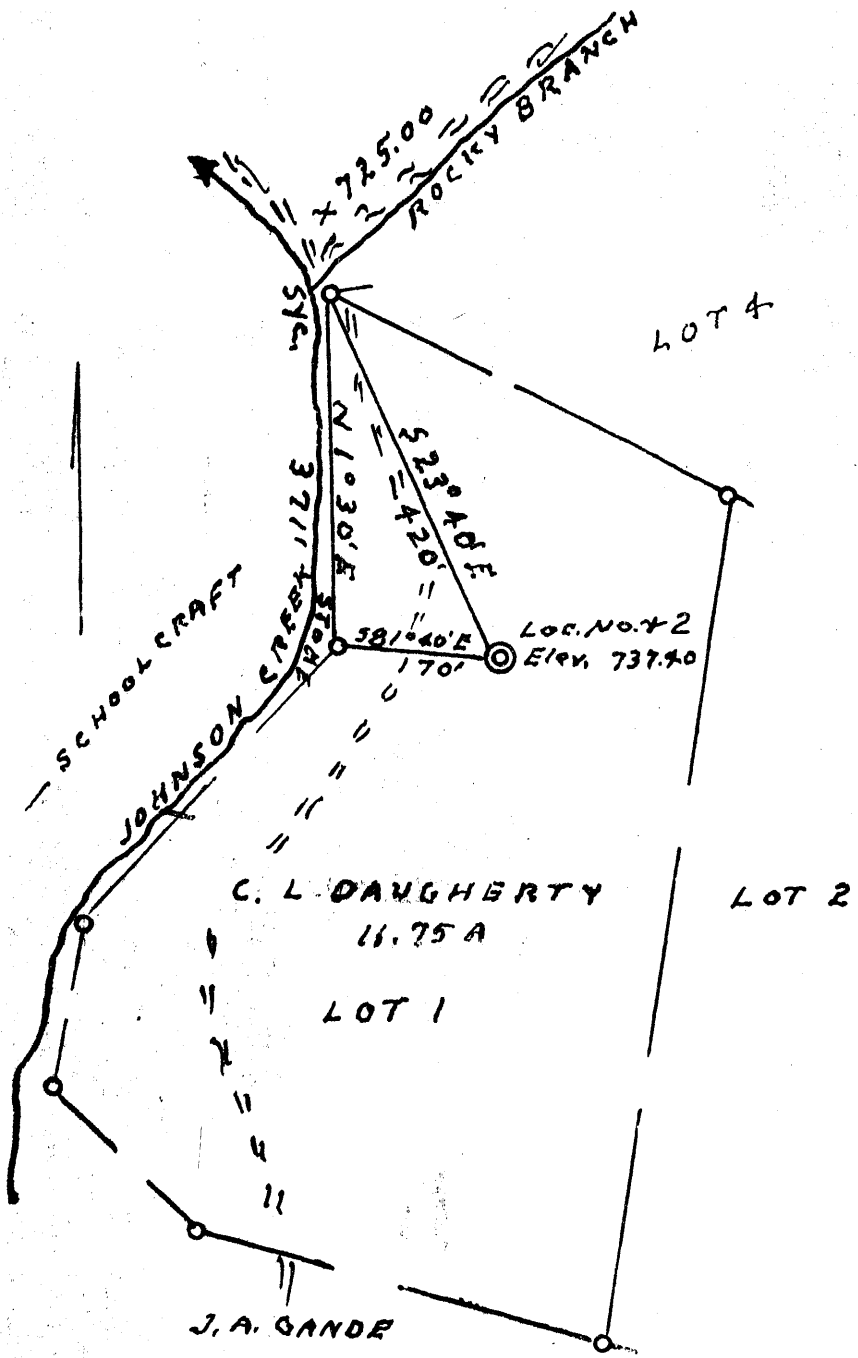
STATE OF WEST VIRGINIA
 DEPARTMENT OF MINES
 OIL AND GAS DIVISION
 CHARLESTON

WELL LOCATION MAP
 FILE NO. ROA-1898-Rev.

+ Denotes location of well on United States Topographic Maps, scale 1 to 62,500, latitude and longitude lines being represented by border lines as shown.
 - Denotes one inch spaces on border line of original tracing.

LATITUDE 38° 40'

LONGITUDE 81° 20'



Minimum Error of Closure 1' IN 200

Source of Elevation FORKS ROAD N.W. CORNER 725.00

- Fracture
- New Location
- Drill Deeper
- Abandonment

I, the undersigned, hereby certify that this map is correct to the best of my knowledge and belief and shows all the information required by paragraph 6 of the rules and regulations of the oil and gas section of the mining laws of West Virginia.

Signed: L. F. Dyer
 Squares: N S E W

Company BLAKE HAMMACK
 Address 2606 A CONNER DRIVE CHARLESTON, W. VA., 25302
 Farm C. L. DAUGHERTY (Min.)
 Tract Acres 11.75 Lease No. _____
 Well (Farm) No. 72 Serial No. _____
 Elevation (Spirit Level) 737.40
 Quadrangle WALTON
 County ROANE District WALTON
 Engineer L. F. Dyer
 Engineer's Registration No. 804
 File No. _____ Drawing No. _____
 Date 9-17-70 Scale 1" = 200'

STATE OF WEST VIRGINIA
 DEPARTMENT OF MINES
 OIL AND GAS DIVISION
 CHARLESTON

WELL LOCATION MAP

FILE NO. Ro-1898

+ Denotes location of well on United States Topographic Maps, scale 1 to 62,500, latitude and longitude lines being represented by border lines as shown.

- Denotes one inch spaces on border line of original tracing.



STATE OF WEST VIRGINIA
DEPARTMENT OF MINES
OIL AND GAS WELLS DIVISION

Rotary
Spudder
Cable Tools
Storage
Oil or Gas Well (KIND)

39-30
5-24
Quadrangle Walton

Permit No. ROA-1898-Rev.
BLAKE HAMMACK

WELL RECORD

Company XXX Address <u>2606-A Conner Drive, Charleston, W. Va.</u> Farm <u>Howard Surface</u> Acres <u>38</u> Location (waters) <u>Johnston Creek</u> Well No. <u>2</u> Elev. <u>805'</u> District <u>Walton</u> County <u>Roane</u> The surface of tract is owned in fee by <u>Howard Lonnie & Carlos Surface</u> Address <u>Charleston, W. Va.</u> Mineral rights are owned by <u>Emma F. Miller, 610 3rd St., New Matamoras, Ohio</u> <u>Ruby Spencer, 990 Miller Ave., Akron, Ohio</u> Drilling commenced <u>10-19-70</u> Drilling completed <u>10-23-70</u> Date Shot From To With Open Flow /10ths Water in Inch /10ths Merc. in Inch Volume Cu. Ft. Rock Pressure lbs. hrs. Oil <u>Show</u> bbls., 1st 24 hrs. WELL ACIDIZED (DETAILS) WELL FRACTURED (DETAILS) <u>By Dowell</u> RESULT AFTER TREATMENT (Initial open Flow or bbls.) <u>5 bbls.</u> ROCK PRESSURE AFTER TREATMENT HOURS Fresh Water Feet Salt Water Feet Producing Sand <u>Big Injun</u> Depth	Casing and Tubing Size 16 13 10 8 1/4 <u>8 5/8</u> 6 3/4 <u>5 1/2"</u> 5 3/16 4 1/2 3 2 Liners Used	Used in Drilling <u>270.55</u> <u>2005'</u>	Left in Well <u>270.55</u> <u>2005'</u>	Packers Kind of Packer Size of Depth set Perf. top Perf. bottom Perf. top Perf. bottom
--	--	---	---	---

Attach copy of cementing record.
CASING CEMENTED 8 5/8 SIZE 270.55 No. Ft. 10-19-70 Date
125-8" 60 bags 5 1/2"
Amount of cement used (bags)
Name of Service Co. Well Service Company
COAL WAS ENCOUNTERED AT FEET INCHES
FEET INCHES FEET INCHES
FEET INCHES FEET INCHES

Formation	Color	Hard or Soft	Top	Bottom	Oil, Gas or Water	Depth	Remarks
Rotary			8				
Surface Clay			40	68			
Rock			68	82			
Sand			82	88			
Red Rock & Shale			88	670			
Shale with sand streaks			670	912			
Sand with shale & Sand Streaks			912	1430			
Salt Sand			1430	1725			
Little Lime			1725	1755			
Pencil Cave			1755	1765			
Big Lime			1765	1915			
Injun Sand			1915	1951			
Shale			1951				
TOTAL DEPTH				2012 2012			2012 2012

RECEIVED
DEC 1 1970

OIL & GAS DIVISION
DEPT. OF MINES

011 Show