

ACCURACY: 1p/200p

Source of Elevation BM ON HENRY FORK (737.9')

I, the undersigned, hereby certify that this map is correct to the best of my knowledge and belief and shows all the information required by paragraph 6 of the rules and regulations of the oil and gas section of the mining laws of West Virginia.

- New Location
- Drill Deeper
- Abandonment ~~6-16-70~~
- Fracture Canc. 7/29/70
- Redrill

Chet Waterman

Company ~~JOS. P. OIL CORP.~~ ALLEN BEARD

Address PARKERSBURG, W.VA.

Farm G.F. DILLON

Tract Acres 317 Lease No. _____

Well (Farm) No. 2 Serial No. _____

Elevation (Spirit Level) 845.6'

Quadrangle ARNOLDSBURG SW

County ROANE District SMITHFIELD

Engineer CHET WATERMAN

Engineer's Registration No. 3788

File No. 68003-104 Drawing No. _____

Date 6/24/68 Scale 1" = 40P

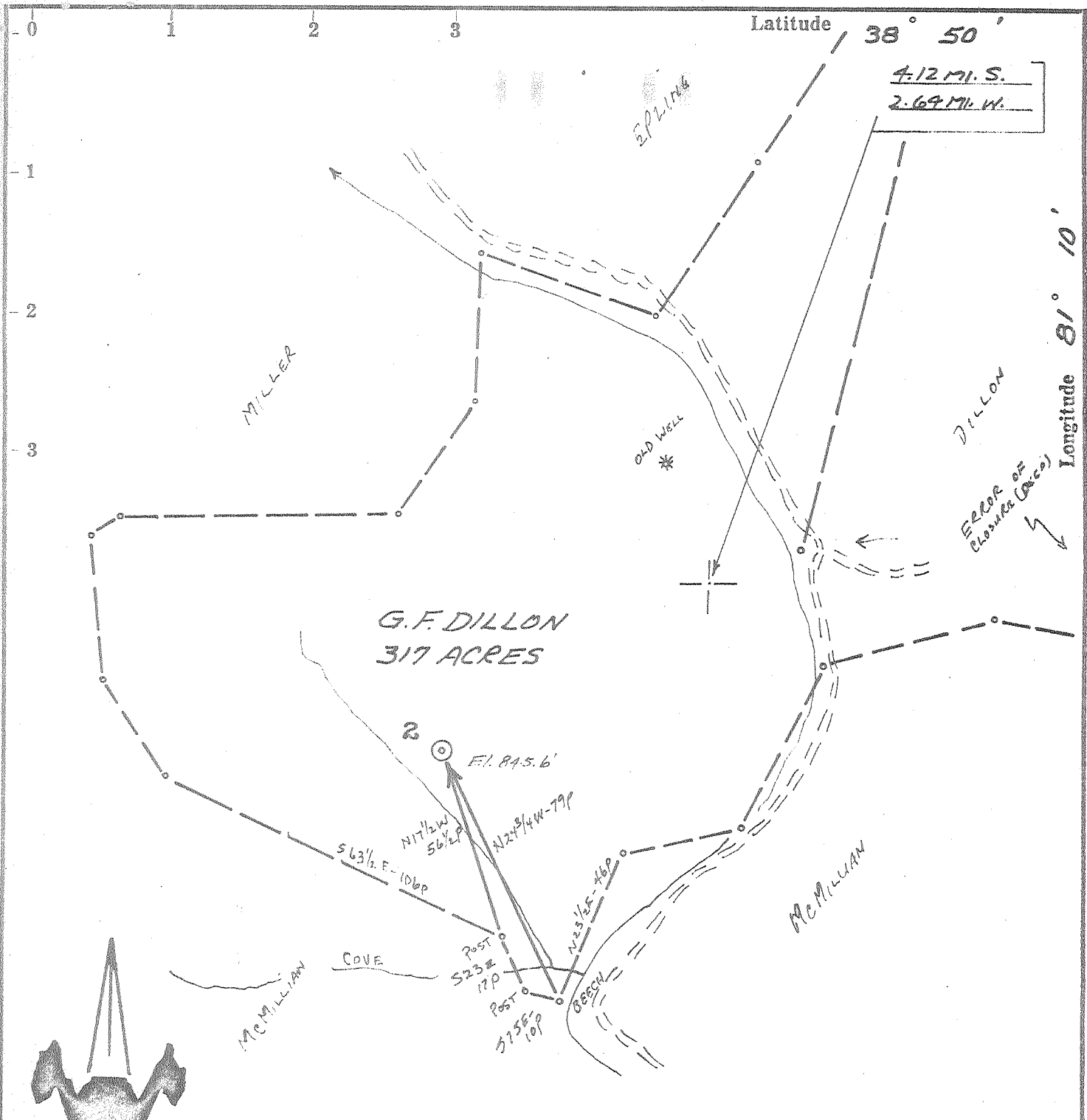
STATE OF WEST VIRGINIA
DEPARTMENT OF MINES
OIL AND GAS DIVISION
CHARLESTON

WELL LOCATION MAP

FILE NO. ROA-1676
Plugging Cancelled - 7/29/70

+ Denotes location of well on United States Topographic Maps, scale 1 to 62,500, latitude and longitude lines being represented by border lines as shown.

— Denotes one inch spaces on border line of original tracing.



ACCURACY: 1/200p

Source of Elevation BM ON HENRY FORK (797.9')

- New Location
- Drill Deeper
- Abandonment
- Fracture
- Redrill

I, the undersigned, hereby certify that this map is correct to the best of my knowledge and belief and shows all the information required by paragraph 6 of the rules and regulations of the oil and gas section of the mining laws of West Virginia.

Chet Waterman

~~JORGESS OIL CORP. & ALLEN BEARD~~

Company ALLEN BEARD

Address PARKERSBURG, W.V.A.

Farm G. F. DILLON

Tract Acres 317 Lease No. _____

Well (Farm) No. 2 Serial No. _____

Elevation (Spirit Level) 845.6'

Quadrangle ARNOLDSBURG SW

County ROANE District SMITHFIELD

Engineer CHET WATERMAN

Engineer's Registration No. 3788

File No. 68003-104 Drawing No. _____

Date 6/24/68 Scale 1" = 40p

STATE OF WEST VIRGINIA
DEPARTMENT OF MINES
OIL AND GAS DIVISION
CHARLESTON

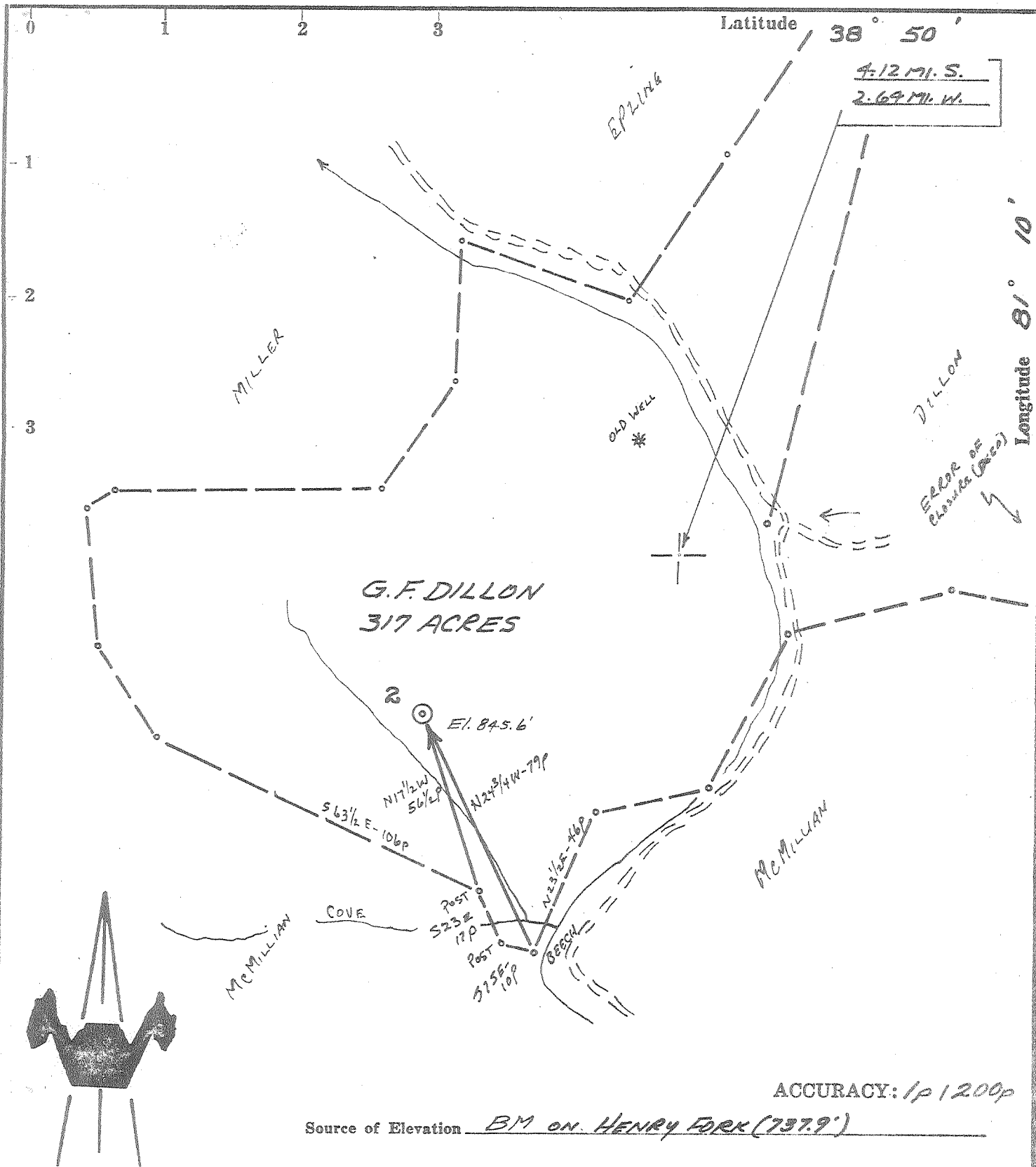
WELL LOCATION MAP

FILE NO. ROA-1676-P

~~Plugging Cancelled 7/29/70~~

+ Denotes location of well on United States Topographic Maps, scale 1 to 62,500, latitude and longitude lines being represented by border lines as shown.

--- Denotes one inch spaces on border line of original tracing.



ACCURACY: 1p/200p

Source of Elevation BM ON HENRY FORK (737.9')

- New Location
- Drill Deeper
- Abandonment issued 6-16-70
- Fracture
- Redrill

I, the undersigned, hereby certify that this map is correct to the best of my knowledge and belief and shows all the information required by paragraph 6 of the rules and regulations of the oil and gas section of the mining laws of West Virginia.

Chet Waterman

Company	JOGRUSS OIL CORP. & ALLEN BEARD	
Address	PARKERSBURG, W.VA.	
Farm	G. F. DILLON	
Tract	Acres 317	Lease No.
Well (Farm) No.	2	Serial No.
Elevation (Spirit Level)	845.6'	
Quadrangle	ARNOLDSBURG SW	
County	ROANE	District SMITHFIELD
Engineer	CHET WATERMAN	
Engineer's Registration No.	3788	
File No.	68003-104	Drawing No.
Date	6/24/68	Scale 1" = 40p

STATE OF WEST VIRGINIA
DEPARTMENT OF MINES
OIL AND GAS DIVISION
CHARLESTON

WELL LOCATION MAP
FILE NO. ROA-1676-P

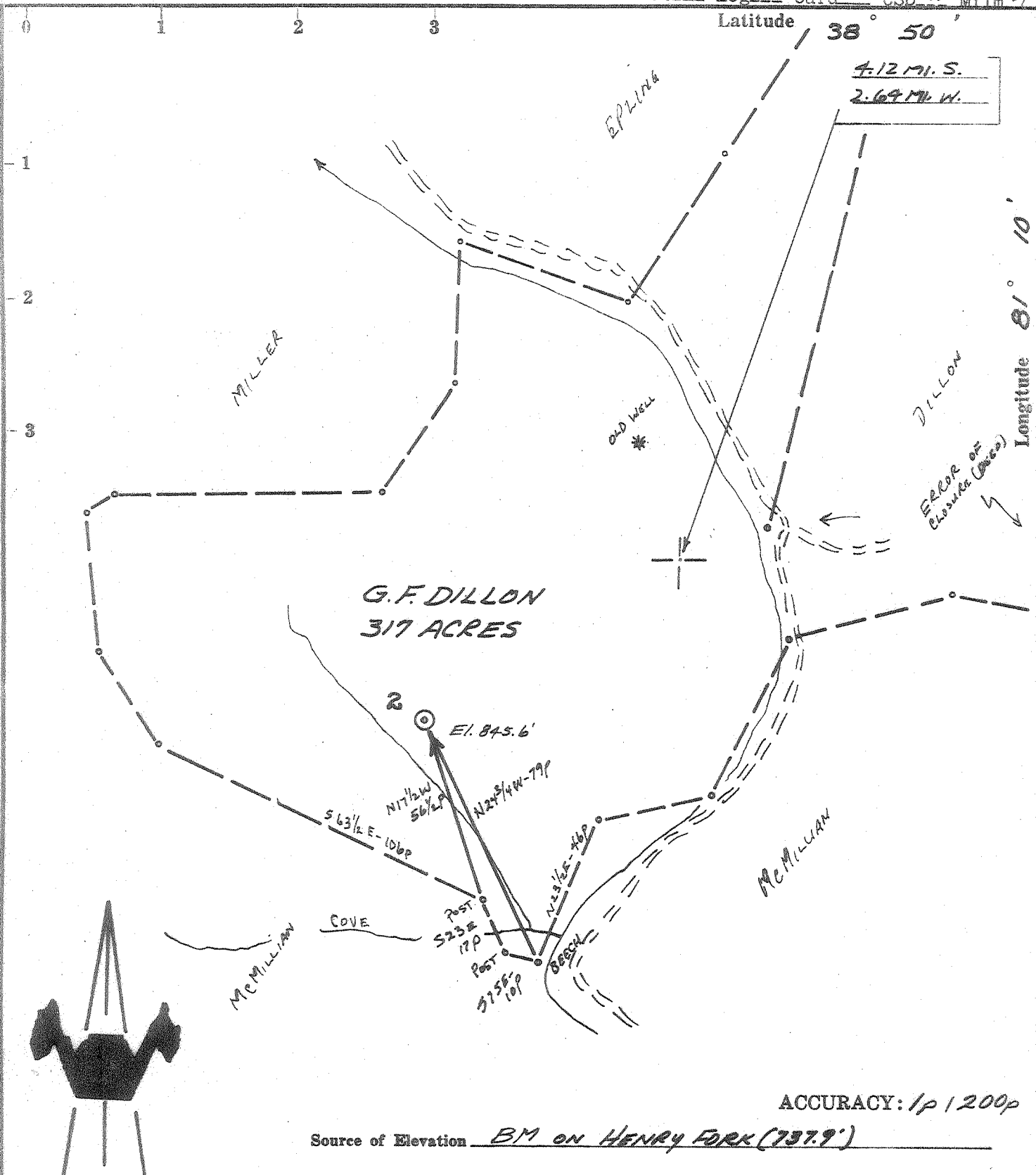
+ Denotes location of well on United States Topographic Maps, scale 1 to 62,500, latitude and longitude lines being represented by border lines as shown.

— Denotes one inch spaces on border line of original tracing.

Latitude **38° 50'**

4.12 Mi. S.
2.69 Mi. W.

Longitude **81° 10'**



ACCURACY: 1p/200p

Source of Elevation BM ON HENRY FORK (737.9')

- New Location
- Drill Deeper
- Abandonment
- Fracture
- Redrill

I, the undersigned, hereby certify that this map is correct to the best of my knowledge and belief and shows all the information required by paragraph 6 of the rules and regulations of the oil and gas section of the mining laws of West Virginia.

Chet Waterman

Company	JOGRUSS OIL CORP. & ALLEN BEARD	
Address	PARKERSBURG, W.VA.	
Farm	G. F. DILLON	
Tract	Acres 317	Lease No. _____
Well (Farm) No.	2	Serial No. _____
Elevation (Spirit Level)	845.6'	
Quadrangle	ARNOLDSBURG SW	
County	ROANE	District SMITHFIELD
Engineer	CHET WATERMAN	
Engineer's Registration No.	3788	
File No.	68003-104	Drawing No. _____
Date	6/27/68	Scale 1" = 40p

STATE OF WEST VIRGINIA
DEPARTMENT OF MINES
OIL AND GAS DIVISION
CHARLESTON

WELL LOCATION MAP
FILE NO. **ROA-1676**

+ Denotes location of well on United States Topographic Maps, scale 1 to 62,500, latitude and longitude lines being represented by border lines as shown.

— Denotes one inch spaces on border line of original tracing.

Deep Well (Tusc.)

1-1 Unnamed NFW Tusc. disc



STATE OF WEST VIRGINIA
DEPARTMENT OF MINES
OIL AND GAS DIVISION

Rotary
Spudder
Cable Tools
Storage

Quadrangle Arnoldsburg

WELL RECORD

Permit No. ROA-1676

Oil or Gas Well Gas
(KIND)

Company Jogruss Oil Corp. & Allen Beard
Address P. O. Box 1228, Parkersburg, W. Va.
Farm G. F. Dillon Acres 317
Location (waters) Henrys Fork
Well No. 2 Elev. 846
District Smithfield County Roane
The surface of tract is owned in fee by G. F. Dillon
Address Spencer, W. Va.
Mineral rights are owned by G. F. Dillon et al
Address Spencer, W. Va.

Drilling commenced 8-14-68
Drilling completed 9-12-68
Date Shot Not Shot From --- To ---
With ---

Open Flow --- /10ths Water in --- Inch
--- /10ths Merc. in --- Inch
Volume 762,000 Cu. Ft.
Rock Pressure 2825 lbs. 36 hrs.

OR -0- bbls., 1st 24 hrs.
WELL ACIDIZED (DETAILS) 3000 gallons
15% HCl

WELL FRACTURED (DETAILS) 30,000 #40-69 sand and 1948 bbls gelled CaCl water. Inj. Rate 18.6 bbls/min. Final Pressure 4850 psi.

RESULT AFTER TREATMENT (Initial open Flow or bbls.) 857,000 per day 857 MCF
ROCK PRESSURE AFTER TREATMENT 2850 HOURS 24
Fresh Water --- Feet --- Salt Water --- Feet ---
Producing Sand Clinton Depth 7720-7850

Casing and Tubing	Used in Drilling	Left in Well	Packers
Size			Kind of Packer
3 1/2 3 1/8"	174	174	Size of
4 9-5/8"	2284	2284	Depth set
5 1/2 7"	6707	6707	Perf. top
6 1/2	100 sacks		Perf. bottom
8 4 1/2"	7965	7965	Perf. top
Liners Used	123 sacks		Perf. bottom

Attach copy of cementing record.
CASING CEMENTED See Details Above SIZE --- No. Ft. --- Date ---
Amount of cement used (bags) See Details Above
Name of Service Co. Howco
COAL WAS ENCOUNTERED AT NONE FEET --- INCHES ---
FEET --- INCHES --- FEET --- INCHES ---
FEET --- INCHES --- FEET --- INCHES ---

Formation	Color	Hard or Soft	Top	Bottom	Oil, Gas or Water	Depth	Remarks
Surface			0	40	5615	5804	5886
Shale			40	75	846	846	846
Rock			75	120			
Sand			120	140			
Shale			140	275	4769	4958	5040
Shale & Sand Streaks			275	1240			
Salt Sand & Lime Streaks			1240	1736			
Big Lime			1736	1884			
Big Injun			1884	1930			
Berea Zone			2261	2268	Oil	2800	Good Show
Shale			2268	5615			
Corniferous Lime			5615	5804	No Show Oil, Water, gas		
Oriskany Sand			5804	5886	No Show of oil, water, gas		
Newburg Zone			6894	6910	Water-Fair show @6680'		6682'
Clinton Sand	<u>Tuscarora</u>		7720	7850	No Show of oil, water, gas		
Shale			7850	7965	Gas (T.D.)	7750	989 BTU/1000
			<u>6894</u>				
			<u>846</u>				
			<u>6048</u>				

