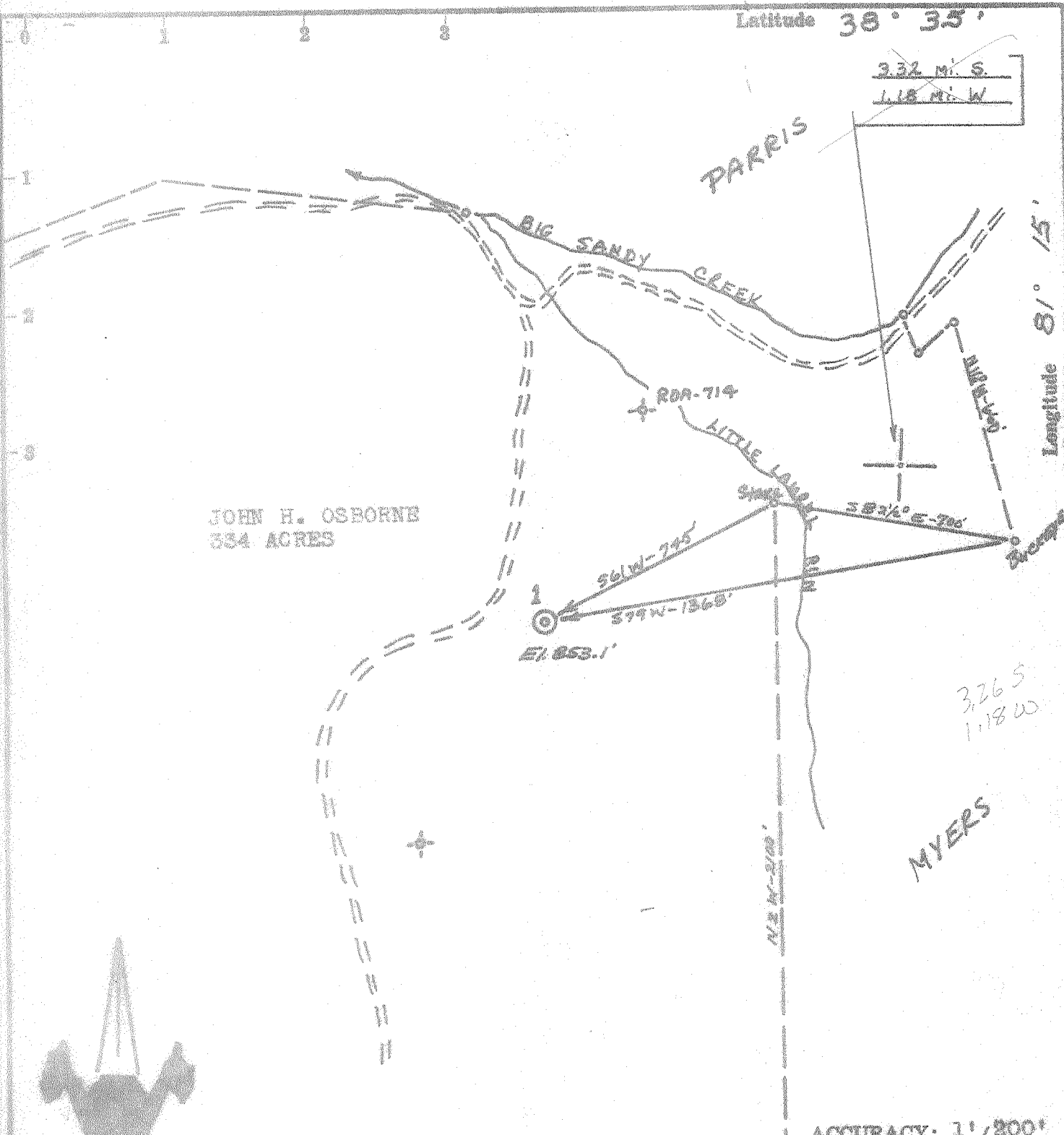


Latitude 38° 35'

332 Mi. S.  
118 Mi. W.



JOHN H. OSBORNE  
334 ACRES

RDA-714

PARRIS

1  
Elev. 853.1'

S61W-745'  
S79W-1368'

LITTLE LAUREL  
38 3/4° E-700'

3265  
11800

MYERS

ACCURACY: 1'/200'

Source of Elevation Well - Roa-714 (866.3')

I, the undersigned, hereby certify that this map is correct to the best of my knowledge and belief and shows all the information required by paragraph 6 of the rules and regulations of the oil and gas section of the mining laws of West Virginia.

*Chet Waterman*

- New Location
- Drill Deeper
- Abandonment
- Fracture
- Redrill

Company	UNITED PENN OIL & GAS COMPANY
Address	MUNSTER, INDIANA
Farm	JOHN H. OSBORNE
Tract	Acres 334 Lease No.
Well (Farm) No.	1 Serial No.
Elevation (Spirit Level)	853.1'
Quadrangle	WALTON SE
County	BOONE District GEARY
Engineer	CHET WATERMAN
Engineer's Registration No.	9788
File No.	68003-27 Drawing No.
Date	3/11/68 Scale 1" = 400'

STATE OF WEST VIRGINIA  
DEPARTMENT OF MINES  
OIL AND GAS DIVISION  
CHARLESTON

WELL LOCATION MAP  
FILE NO. ROA - 1665-P

+ Denotes location of well on United States Topographic Maps, scale 1 to 62,500, latitude and longitude lines being represented by border lines as shown.

- Denotes one inch spaces on border line of original tracing.



STATE OF WEST VIRGINIA  
DEPARTMENT OF MINES  
OIL AND GAS DIVISION

Rotary   
Spudder   
Cable Tools   
Storage

Quadrangle Walton se  
Permit No. ROA- 1665

WELL RECORD

Oil or Gas Well Dry  
(KIND)

Company United Penn Oil & Gas Co.  
Address 1436 Fisher Street  
Munster, Indiana 46321  
Name John Osborne Acres 334  
Location (waters) Little Sandy  
Well No. One Elev. 853.1'  
District Geary County Roane  
The surface of tract is owned in fee by John H. Goad  
Securities Bld. Address Charleston, W. Va.  
Mineral rights are owned by John H. Goad et al  
Same Address 3/28/68  
Drilling commenced 4/14/68  
Drilling completed  
Date Shot none From To  
With  
Open Flow /10ths Water in no Inch  
/10ths Merc. in Inch  
Volume Cu. Ft.  
Rock Pressure none lbs. hrs.  
Oil none bbls., 1st 24 hrs.  
WELL ACIDIZED (DETAILS)  
WELL FRACTURED (DETAILS)

Casing and Tubing	Used in Drilling	Left in Well	Packers
Size			Kind of Packer
16	16 <sup>3/4</sup>	16 <sup>3/4</sup>	
13	193 <sup>3/4</sup>	193 <sup>3/4</sup>	
10			Size of
8 1/4	1822	1822'	
6 3/4			Depth set
5 3/16			
4 1/2			
3			Perf. top
2			Perf. bottom
Liners Used			Perf. top
			Perf. bottom

Attach copy of cementing record.  
CASING CEMENTED 8 5/8" SIZE 1822 No. Ft. 4/8/68 Date  
Amount of cement used (bags) 250 sks.  
Name of Service Co. Halliburton  
COAL WAS ENCOUNTERED AT FEET INCHES  
FEET INCHES FEET INCHES  
FEET INCHES FEET INCHES

RESULT AFTER TREATMENT (Initial open Flow or bbls.)  
ROCK PRESSURE AFTER TREATMENT HOURS  
Fresh Water 30' Feet Salt Water 1280', 1300 Feet  
Producing Sand Depth

Formation	Color	Hard or Soft	Top	Bottom	Oil, Gas or Water	Depth	Remarks
sand			0	40			
slate&sand			40	360			
slate&sand			360	590			
shale	Black	s	590	595			
sand			595	650			
slate			650	670			
sand			670	695			
shale			695	750			
slate&Sand			750	1360			
sand			1360	1370			
shale			1370	1430			
sand			1430	1480			
Lime <u>Little</u>			1480	1510			
shale <u>P. Cove</u>			1510	1518			
Lime			1518	1655			Big Lime
Sand			1655	1700			Injun
shale & sand			1700	5339			
shale			5339	5364			Marcellus
lime, dolomite			5364	5506			Onondaga
sand <u>Oriskany</u>			5506	5533			Oriskany
TD				5533			

475

