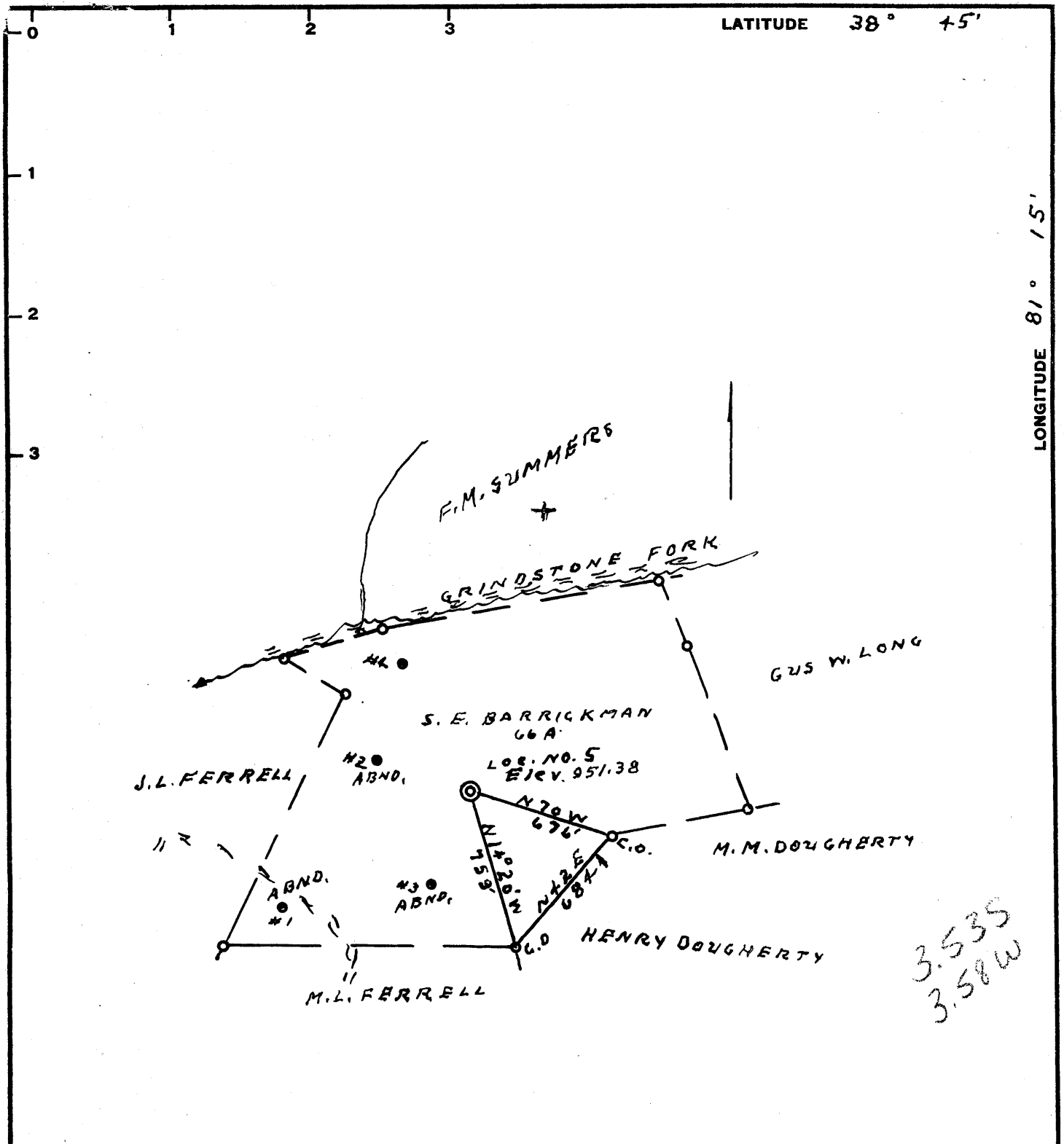


M

D



3.535  
3.58W

Minimum Error of Closure 1" IN 200'  
 Source of Elevation WELL NO. 2 1048.00

Fracture.....  
 New Location.....  
 Drill Deeper.....  
 Abandonment.....

I, the undersigned, hereby certify that this map is correct to the best of my knowledge and belief and shows all the information required by paragraph 6 of the rules and regulations of the oil and gas section of the mining laws of West Virginia.

Signed: L. F. Dyer  
 Squares: N S E W

Map No.

Company FIVE STAR GAS CO.,  
BOX 173  
 Address SPENCER, W. VA.  
 Farm S. E. BARRICKMAN  
 Tract \_\_\_\_\_ Acres 66 Lease No. \_\_\_\_\_  
 Well (Farm) No. 5 Serial No. \_\_\_\_\_  
 Elevation (Spirit Level) 951.38  
 Quadrangle WALTON N2  
 County ROANE District SMITHFIELD  
 Engineer L. F. Dyer  
 Engineer's Registration No. 804  
 File No. \_\_\_\_\_ Drawing No. \_\_\_\_\_  
 Date 3-20-67 Scale 1" = 40. POLES

STATE OF WEST VIRGINIA  
 DEPARTMENT OF MINES  
 OIL AND GAS DIVISION  
 CHARLESTON

### WELL LOCATION MAP

FILE NO. ROA-1585

+ Denotes location of well on United States Topographic Maps, scale 1 to 62,500, latitude and longitude lines being represented by border lines as shown.

- Denotes one inch spaces on border line of original tracing.



STATE OF WEST VIRGINIA  
DEPARTMENT OF MINES  
OIL AND GAS DIVISION 12

Rotary   
Spudder   
Cable Tools   
Storage

Oil with gas show  
(KIND)

WELL RECORD

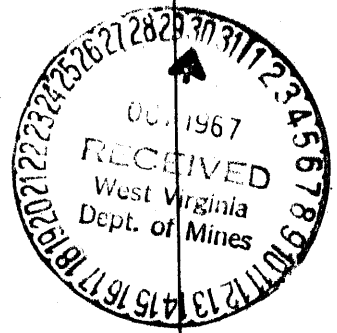
Quadrangle Walton  
Permit No. ROA 1585

Company Five Star Gas Company  
Address P. O. Box 173, Spencer, W. Va.  
Farm S. E. Barickman Acres 66  
Location (waters) Rush Creek  
Well No. 5 Elev. 951  
District Smithfield County Roane  
The surface of tract is owned in fee by.....  
Address.....  
Mineral rights are owned by B. L. Barickman et al  
Address Spencer, W. Va.  
Drilling commenced April 6, 1967  
Drilling completed May 5, 1967  
Date Shot..... From..... To.....  
With.....  
Open Flow /10ths Water in..... Inch  
/10ths Merc. in..... Inch  
Volume..... Cu. Ft.  
Rock Pressure..... lbs..... hrs.  
Oil..... bbls., 1st 24 hrs.  
WELL ACIDIZED (DETAILS).....  
WELL FRACTURED (DETAILS) 300 gal acid, 27,000 # Sand 650 bbl water  
RESULT AFTER TREATMENT (Initial open Flow or bbls.) 25 bbl per day  
ROCK PRESSURE AFTER TREATMENT..... HOURS.....  
Fresh Water..... Feet..... Salt Water..... Feet.....  
Producing Sand Big Injun Depth 1997-2014

Casing and Tubing	Used in Drilling	Left in Well	Packers
Size			Kind of Packer
16.	16'	16'	
13.	269'		Size of
10.	844'		Depth set
8 1/4	1571'	1571'	
6 3/4		2050'	
5 3/16			Perf. top
4 1/2			Perf. bottom
3		2020	Perf. top
2			Perf. bottom
Liners Used			

Attach copy of cementing record. 7" - 1571' - 5/6/67  
CASING CEMENTED 5 1/2 SIZE 2050 No. Ft. 5/13/67 Date  
Amount of cement used (bags) 25 and 48  
Name of Service Co. Well Service Inc.  
COAL WAS ENCOUNTERED AT..... FEET..... INCHES  
..... FEET..... INCHES..... FEET..... INCHES  
..... FEET..... INCHES..... FEET..... INCHES

Formation	Color	Hard or Soft	Top	Bottom	Oil, Gas or Water	Depth	Remarks
Soil			0	4			
Sand			4	20			
Red Rock			20	45			
slate			45	60			
Red Rock			60	70			
Slate			70	90			
Sand			90	115			
Red Rock			115	125			
Blue Slate			125	157			
Red Rock			157	208			
Slate			208	272			
Sand			272	365			
Slate			365	450			
Red Rock			450	455			
Slate			455	463			
Red Rock			463	563			
Slate Shell			563	568			
Red Rock			568	610			
Slate			610	834			
Sand			834	1110			
Slate			1110	1150			
Sand			1150	1252			
Slate			1252	1267			



Formation	Color	Hard or Soft	Top	Bottom	Oil, Gas or Water	Depth Found	Remarks
Sand			1267	1330			
Slate			1330	1340			
Sand			1340	1406			
Slate			1406	1415			
Sand			1415	1450			
Slate			1450	1453			
Sand			1453	1490			
Slate			1490	1538			
Salt Sand			1538	1833	Water at	1615 -	Hole full at 1680
Slate			1833	1839			
Little Lime			1839	1875			
Pencil Cave			1875	1883			
Big Lime			1882	1997			
Injun			1997	2014	Gas 2002 - 2005		
					Oil Show	2005 - 2010	
Slate			2014	2050			
Total Depth				2050			

Date October 27, 19 67

APPROVED Five Star Gas Company, Owner

By John W. Stone  
(Title)  
John W. Stone, Manager