

~~New Location~~   
 Drill Deeper   
 Abandonment   
*dated 6-10-74*

**Pennzoil Co.**  
 Company ~~CITIZEN SERVICE OIL COMPANY~~  
 P.O. Box 1555, Parkersburg, W. Va.  
 Address ~~Box 578 Charleston, W. Va.~~  
 Farm C.C. HIVELY  
 Tract \_\_\_\_\_ Acres 204 Lease No. \_\_\_\_\_  
 Well (Farm) No. 30-W Serial No. \_\_\_\_\_  
 Elevation (Spirit Level) 93354 *WC*  
 Quadrangle WALTON-4 3497 W-090  
 County ROANE District WALTON  
 Engineer Wendell S. Mason  
 Engineer's Registration No. 2113  
 File No. \_\_\_\_\_ Drawing No. W-15-64  
 Date 22 APRIL 64 Scale 1" = 300'

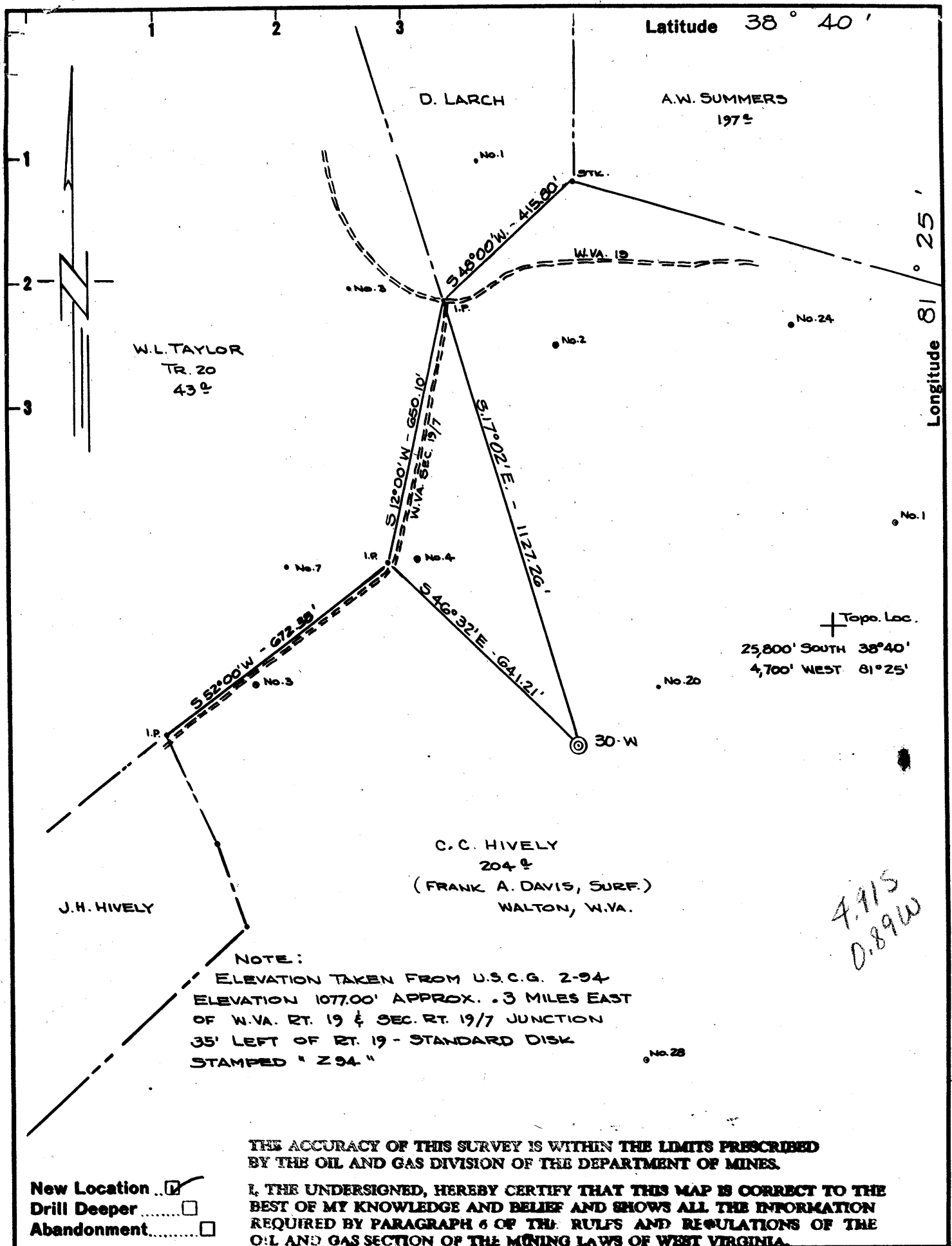
STATE OF WEST VIRGINIA  
 DEPARTMENT OF MINES  
 OIL AND GAS DIVISION  
 CHARLESTON

**WELL LOCATION MAP**  
 FILE NO. ROA-1052-P

+ Denotes location of well on United States  
 Topographic Maps, scale 1 to 62500 lat-  
 titude and longitude lines being represented  
 by border lines as shown.

- Denotes one inch spaces on border line  
 of original tracing.

**47-087**



7.915  
0.89W

Company CITIES SERVICE OIL COMPANY

Address Box 873 CHARLESTON, W.V.A.

Farm C.C. HIVELY

Tract \_\_\_\_\_ Acres 204 Lease No. \_\_\_\_\_

Well (Farm) No. 30-W Serial No. \_\_\_\_\_

Elevation (Spirit Level) 933.54 *we*

Quadrangle WALTON-4-5497 W-090

County ROANE District WALTON

Engineer Wendell S. Moore

Engineer's Registration No. 2113

File No. \_\_\_\_\_ Drawing No. W-15-64

Date 22 APRIL 64 Scale 1" = 300'

STATE OF WEST VIRGINIA  
DEPARTMENT OF MINES  
OIL AND GAS DIVISION  
CHARLESTON

WELL LOCATION MAP  
FILE NO. ROA-1052

+ Denotes location of well on United States Topographic Maps, scale 1 to 62500 latitude and longitude lines being represented by border lines as shown.

- Denotes one inch spaces on border line of original tracing.

8-0 196



STATE OF WEST VIRGINIA  
DEPARTMENT OF MINES  
OIL AND GAS DIVISION 15

Rotary   
Spudder   
Cable Tools   
Storage

**Water**  
(KIND)  
Oil or Gas Well Injection

Quadrangle Walton 4 SW

**WELL RECORD**

Permit No. Roa-1052

Company Cities Service Oil Company  
Address Box 873, Charleston 23, W. Va.  
Farm C. C. Hively, et al Acres 204

Location (waters) \_\_\_\_\_  
Well No. 30-W Elev 933.54'

District Walton County Roane  
The surface of tract is owned in fee by F. A. Davis  
Address Walton, W. Va.

Mineral rights are owned by W. K. Girard, et al  
121 Locust St. Address Spencer, W. Va.

Drilling commenced 5-12-64  
Drilling completed 6-27-64

Date Shot not shot From \_\_\_\_\_ To \_\_\_\_\_  
With \_\_\_\_\_

Open Flow /10ths Water in \_\_\_\_\_ Inch  
/10ths Merc. in \_\_\_\_\_ Inch

Volume \_\_\_\_\_ Cu. Ft.  
Rock Pressure \_\_\_\_\_ lbs. \_\_\_\_\_ hrs.

Oil \_\_\_\_\_ bbls., 1st 24 hrs.  
WELL ACIDIZED not acidized

WELL FRACTURED not fractured

Casing and Tubing	Used in Drilling	Left in Well	Packers
Size			
16			Kind of Packer
13 3/8" 48#	22'	22'	<b>Baker Model "A"</b>
10 3/4" 32#	171'	161'	Size of 4x2"
8 1/2" 24#	713'	713'	
4-1 1/2" 23#	1884'	pulled	Depth set 1937'5" in
4-1 1/2" 23#	2069'	2069'	<b>Hinderliter Head</b>
			Perf. top _____
			Perf. bottom _____
			Perf. top _____
			Perf. bottom _____

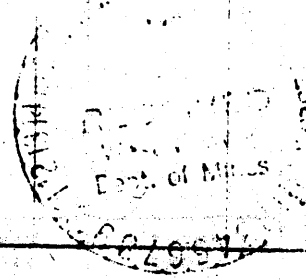
CASING CEMENTED \_\_\_\_\_ SIZE \_\_\_\_\_ No. Ft. \_\_\_\_\_ Date \_\_\_\_\_  
see reverse side

COAL WAS ENCOUNTERED AT none FEET \_\_\_\_\_ INCHES \_\_\_\_\_  
FEET \_\_\_\_\_ INCHES \_\_\_\_\_ FEET \_\_\_\_\_ INCHES \_\_\_\_\_  
FEET \_\_\_\_\_ INCHES \_\_\_\_\_ FEET \_\_\_\_\_ INCHES \_\_\_\_\_

RESULT AFTER TREATMENT Water Injection Well

ROCK PRESSURE AFTER TREATMENT  
Fresh Water 101' Feet  
Salt Water 1514-20' Feet

Formation	Color	Hard or Soft	Top	Bottom	Oil, Gas or Water	Depth	Remarks
Red Rock			0	23			
Blue Slate			23	40			
Brown Shale			40	55			
Blue Slate			55	60			
Sand			60	70			
Blue Slate			70	74			
Red Rock			74	90			
Slate			90	100			
Sand			100	168	F. water	101'	hole full
Slate and Shells			168	191			
Red Rock			191	220			
Slate and Shells			220	250			
Sandy Shale			250	275			
Sand			275	320			
Slate and Shells			320	325			
Red Rock			325	360			
Slate and Shells			360	400			
Red Rock			400	465			
Lime			465	485			
Red Rock			485	500			
Slate and Shells			500	525			
Red Rock			525	555			
Sand			555	580			
Slate and Shells			580	600			
Pink Rock			600	630			
Slate and Shells			630	640			
Pink Rock			640	650			



Formation	Color	Hard or Soft	Top 15'	Bottom	Oil, Gas or Water	Depth Found	Remarks
Slate and Shells			650	685			
Sand			685	706			
Slate and Shells			706	778			
Sand			778	890			
Slate and Shells			890	950			
Sand			950	978			
Black Lime			978	1030			
Sand			1030	1100			
Slate and Shells			1100	1220			
Sandy Shale			1220	1250			
Sand			1250	1278			
Sand, Shale and Slate			1278	1317			
Sandy Lime			1317	1380			
Sand			1380	1790	Oil	1510'	show
Lime			1790	1815	S. Water	1514-20'	hole full
Slate and Shells			1815	1834			
Lime			1834	1955			
Big Injun Sand			1955	2009	1960'DLM=1965'SLM		
Break			2009	2010			
Sand			2010	2022			
Slate			2022	2054	2053'DLM=2054'Schlumberger Meas.		
Total depth-----				2054' Schl. meas.			
Plugged back depth-----				2042'			
Samples show:							
Big Injun			1962	2010	Oil	1971'	odor
Squaw Sand			2011	2022			
Cored well with Cable Tool Core Barrel from 1965'SLM to 2025' (June 24 to 26th incl)							
6-27-64 Ran Schlumberger Logs: Gamma Ray, Neutron, Caliper, Temperature, Induction and Density.							
7-7-64 Perforated 4-1/2" 1973' to 2006' 4 shots/foot=133 shots.							
<b>CASING RECORD</b>							
5-23-64	Ran 8-5/8" casing at 709'DLM with shoe - set in 20' red mud.						
6-16-64	Ran 7" 23# casing at 1859'DLM with shoe-R/L nipple 5 joints off bottom. Pulled later.						
7-3-64	Ran 4-1/2" 9.5# casing at total depth with shoe on bottom, Insert in top 1st joint, centralizers on 1st, 6th and 8th joints. Anchor packer set at 1974', R/L nipple at 1, 787'. Cemented with 21 sacks Latex Cement. Pumped plug to insert.						

DEVELOPMENT OF WELLS  
STATE OF ARKANSAS

Date July 20, 1964



APPROVED Cities Service Oil Company, Own  
By W. S. Moore, Division Sup't  
(Title)