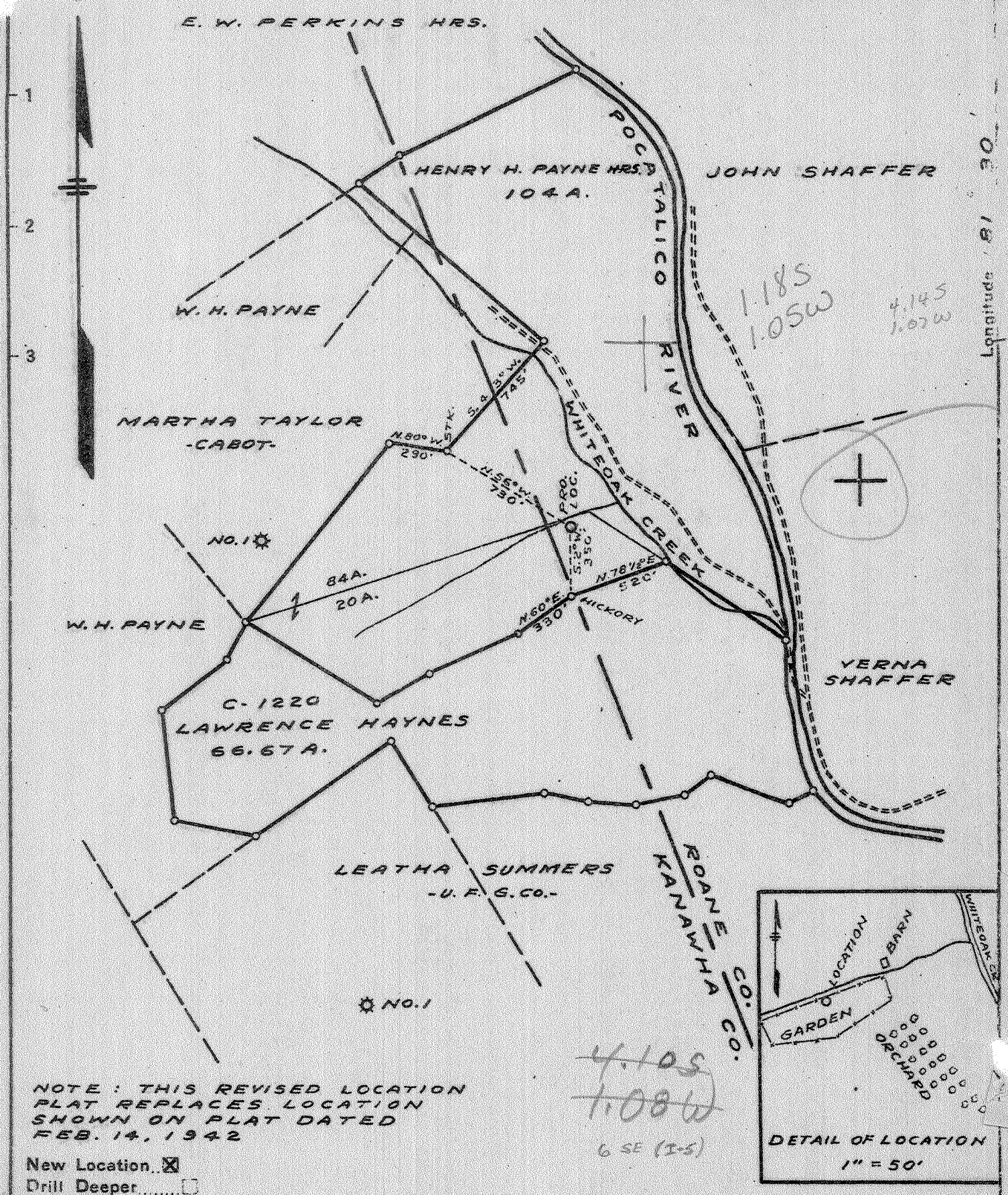


4

Latitude 38 40
38 37 30



NOTE: THIS REVISED LOCATION PLAT REPLACES LOCATION SHOWN ON PLAT DATED FEB. 14, 1942

New Location
 Drill Deeper
 Abandonment

LOC. 1.0 M. S.W. OF CICERONE

Company	COLUMBIAN CARBON CO. AND POCA FORK OIL & GAS CO.	
Address	BOX 1240 CHARLESTON W. VA. AND CLENDENIN W. VA.	
Farm	HAYNES - PAYNE	
Tract	Acres 170.67	Lease No. CT-89
Well (Farm) No.	1	Serial No.
Elevation (Spirit Level)	674.0	
Quadrangle	KENNA S.E. -6- ^{Romanic 1-5} EC	
County	ROANE	District HARPER
Engineer	<i>J. M. Bell</i>	
Engineer's Registration No.	772	
File No.	Drawing No. 399	
Date	3-27-42	Scale 1" = 660'

STATE OF WEST VIRGINIA
 DEPARTMENT OF MINES
 OIL AND GAS DIVISION
 CHARLESTON

WELL LOCATION MAP
 FILE NO. ROA-429

+ Denotes location of well on United States Topographic Maps, scale 1 to 62,500, latitude and longitude lines being represented by border lines as shown.

- Denotes one inch spaces on border line of original tracing.

1-0-101 Deep Well

WEST VIRGINIA DEPARTMENT OF MINES
OIL & GAS DIVISION
W E L L R E C O R D

Permit No. Roane 429					
Kenna Quad S.E.					Dry Hole
Company	Poca Fork Oil & Gas Company	16	13'	13'	CASING & TUBING
Address	Clendenin, W.Va.	1 3/8	57	57	
Farm	Haynes-Payne	Acres 170.67			
Location	Poca River	10 1/2	614'5	614'5 *	
Well No	1-GW-659	Elev. 679.6 DF	85/8	1744'10	1744'10*
District	Harper	Roane County	7	4989'9	4989'9
Surface	Lawrence Haynes et al(66.67A)				
	813 Red Oak St., Charleston, W.Va.				*pulled
Mineral	Same				
Commenced	4-29-42				
Completed	8-4-42				
Not shot					
Dry Hole					
Salt Water	5065' est. 1600'; 5130' est. 2500'				

Surface	0	12	
Sand	12	35	
Red Rock	35	40	
Slate	40	150	
Red Rock	150	185	
Slate	185	210	
Red Rock	210	250	
Slate & Shells	250	402	
Red Rock	402	425	
Slate & Shells	425	560	
Sand	560	588	
Slate & Shells	588	595	
Sand	595	740	
Slate & Shells	740	930	
Sand	930	960	
Slate	960	970	
Sand	970	1060	
Slate & Shells	1060	1180	
-Salt Sand	1180	1544	
-Black Lime	1544	1568	
-Pencil Cave	1568	1573	
-Big Lime	1573	1722	
-Big Injun	1722	1750	
Slate & Shells	1750	3775	
Brown Shale	3775	3955	Small show gas 3830'
Slate & Shells	3955	4600	
Brown Shale	4600	4830	
White Slate	4830	4865	
Brown Shale	4865	4900	
-Black Shale	4900	4921	
-Corniferous Lime	4921	5057	SLM
-Oriskany Sand	5057	5104	Show gas 5062'
-Lime	5104	5115	Water 5065' est 1600'
-Oriskany Sand	5115	5130	Water 5130' est 2500'
TOTAL DEPTH		5130	

*Revised casing 1 3/8" 10 1/2' dia.
in Roane 429 - 3000' casing.*

CEMENT RECORD: 7-15-42 Cemented 7" casing, pulled pipe 70' off bottom, Ran 10 sacks of cement on bottom -ran 50 bags of aquagel. Plug on tops aquagel-returned at 4250, Pumped plug to 4680-pipe went back to bottom.

WELL WILL BE PLUGGED AND ABANDONED