

70268

AUG - 0 1961

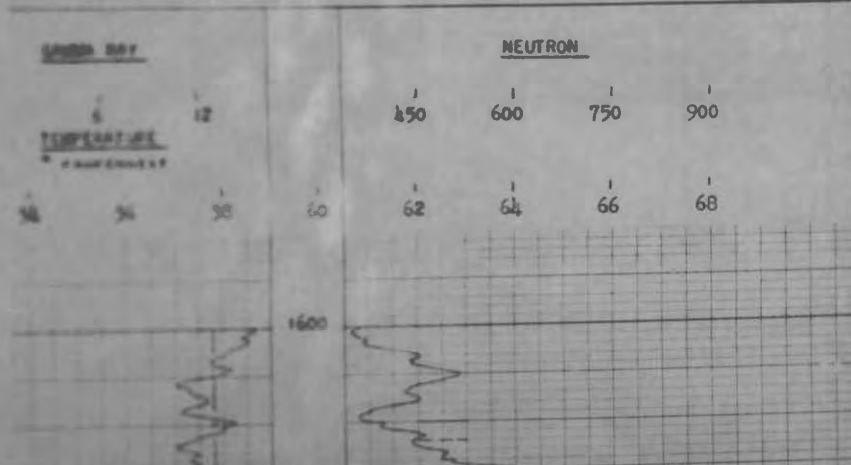
LOG NO.	LOG DATE	LOG TIME	LOG TYPE	LOG NO.	LOG DATE	LOG TIME	LOG TYPE
WELLS: HARTMAN # 5 FIELD: RITCHIE COUNTY: RITCHIE STATE: W. VA. LOCATION: OTHER LOGS:				COMPANY: J. E. DEEM LOG NO.:			
SURFACE ELEVATION: 1500 FT. CASING DEPTH: 1000 FT. LOG DEPTH: 1000 FT.				LOG TYPE: NEUTRON LOG NO.: 511-A LOG DATE: 8-1-61			



EQUIPMENT DATA		NEUTRON	
LOG NO.	511-A	LOG TYPE	N-G
TOOL MODEL NO.	3578	DIAM.	1.670
DETECT. MODEL NO.	1670	TYPE	GM
LENGTH	1	SOURCE MODEL NO.	N-205
SERIAL NO.	2k	SPACING	2k
TYPE	PLURBE	STRENGTH	8.01 x 10 ⁶ N/SEC.

LOGGING DATA		NEUTRON	
LOG NO.	511-A	LOG TYPE	N-G
TOOL MODEL NO.	3578	DIAM.	1.670
DETECT. MODEL NO.	1670	TYPE	GM
LENGTH	1	SOURCE MODEL NO.	N-205
SERIAL NO.	2k	SPACING	2k
TYPE	PLURBE	STRENGTH	8.01 x 10 ⁶ N/SEC.

REMARKS: SURFACE HERE FOR CORRELATION AND EVALUATION OF OIL & GAS PRODUCTIONS ONLY.
 * - INDICATED POINTS OF GAS ENTRY INTO BOREHOLE.



ID: COUNTY: 085 (RITCHIE) PERMIT: 70268 SFX: W (Worked Over)

REASSIGNED ID #: ()

COMPLETION INFO: ELEVATION: COMP REC FLAG: (from E-LOG)
ELEVATION TYPE: G RIG TYPE:
(Ground Lvl) (???)

* LOCATION TAX DST:
* INFO: DEGREES MINUTES MILES
* 7.5' LATITUDE: 00 00.0 0.00S
* LONGITUDE: 00 00.0 0.00W
* QUADRANGLE:
* 15' LATITUDE: 00 00 0.00S
* LONGITUDE: 00 00 0.00W
* QUADRANGLE:
* 5' SECT:

CLASSIFICATION: DATES: MM/DD/YYYY
INITIAL: (unclassified) SPUD: / / WELL TYPE: 0
FINAL: (unclassified) COMP: / / (Unknown)
FIELD: BATCH: / / CMPL METH:
(?Never assigned) YEAR RPTD: ()

OPEN GAS-BEFORE TREATMENT: (MCFPD) OIL-BEFORE TREATMENT: (BOPD)
FLOW: GAS-AFTER TREATMENT: (MCFPD) OIL-AFTER TREATMENT: (BOPD)

* UTM: EASTING: NORTHING:
* COORDINATE DIGITIZED (Y/N):

ROCK NATURAL (PSI): 0 TIME (NATURAL, IN HOURS): 0
PRESSURE: TREATED (PSI): 0 TIME (TREATED, IN HOURS): 0

* OWNER STATUS: C (CmpLtd) DATE: / /
* INFO: SURFACE OWNER: Hartman 5
* OIL&GAS OWNER:
* COMPANY NUMBER:
* OPERATOR: 0218 (J Frank Deem)

DEPTHS: TOTAL FTG: 2212 NEW FTG: 0 EXPL FTG: 0

DEEPEST FM: AT TOTAL DEPTH: 999 TESTED: 999
(undetermined unit) (undetermined unit)

MECHANICAL LOG INFO:

STATUS: RANGE OF INTERVALS: 2010- 2164 DEEPEST FM LOGGED:
LOGS AVAILABLE: GR,* MICROFILM ROLL NUMBER(S): 55
COMMENT: on #55 no pmt #;no PPT COPY
LOG TYPES: GR-gamma ray; D-density; T-temperature; I-induction; N-neutron; S-sonic; *Other types not noted