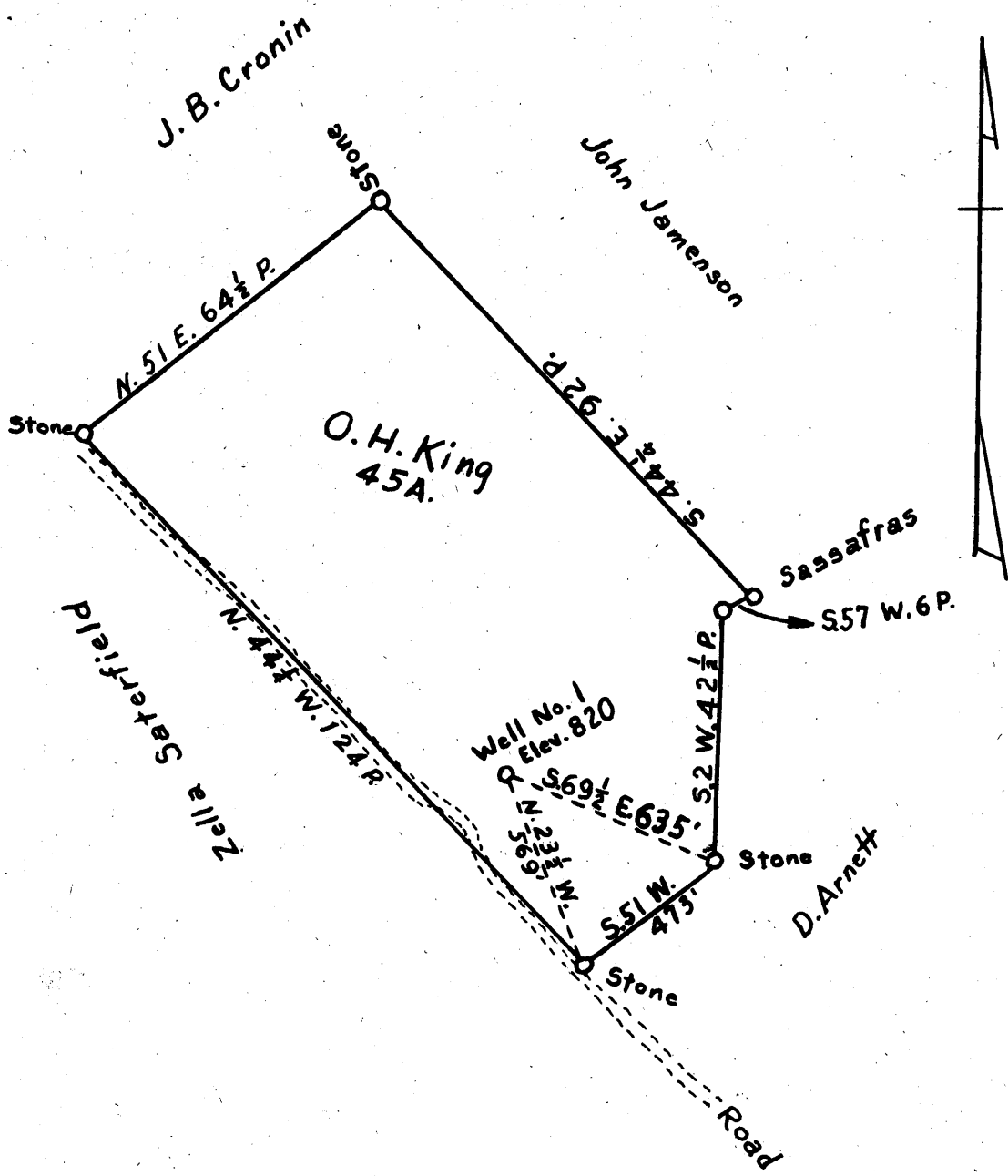


Latitude 39° ~~9.0~~
70001

Longitude 81° ~~05'~~



New Location
 Drill Deeper
 Abandonment

Company Eastern Interior Oil Co.
 Address 1809 Arcade Bldg., St. Louis, Mo.
 Farm O. H. King
 Tract 1 Acres 45 Lease No. _____
 Well (Farm) No. 1 Serial No. _____
 Elevation (Spirit Level) 820
 Quadrangle St. Marys
 County Ritchie District Grant
 Engineer L. G. Merrill
 Engineer's Registration No. Field-W.P. Ireland
F 152
 File No. _____ Drawing No. _____
 Date July 17, 1959 Scale 1" = 30 P.

STATE OF WEST VIRGINIA
 DEPARTMENT OF MINES
 OIL AND GAS DIVISION
 CHARLESTON

WELL LOCATION MAP

FILE NO. Rit-~~XXXX~~
 BY FARM

+ Denotes location of well on United States Topographic Maps, scale 1 to 62,500, latitude and longitude lines being represented by border lines as shown.
 - Denotes one inch spaces on border line of original tracing.