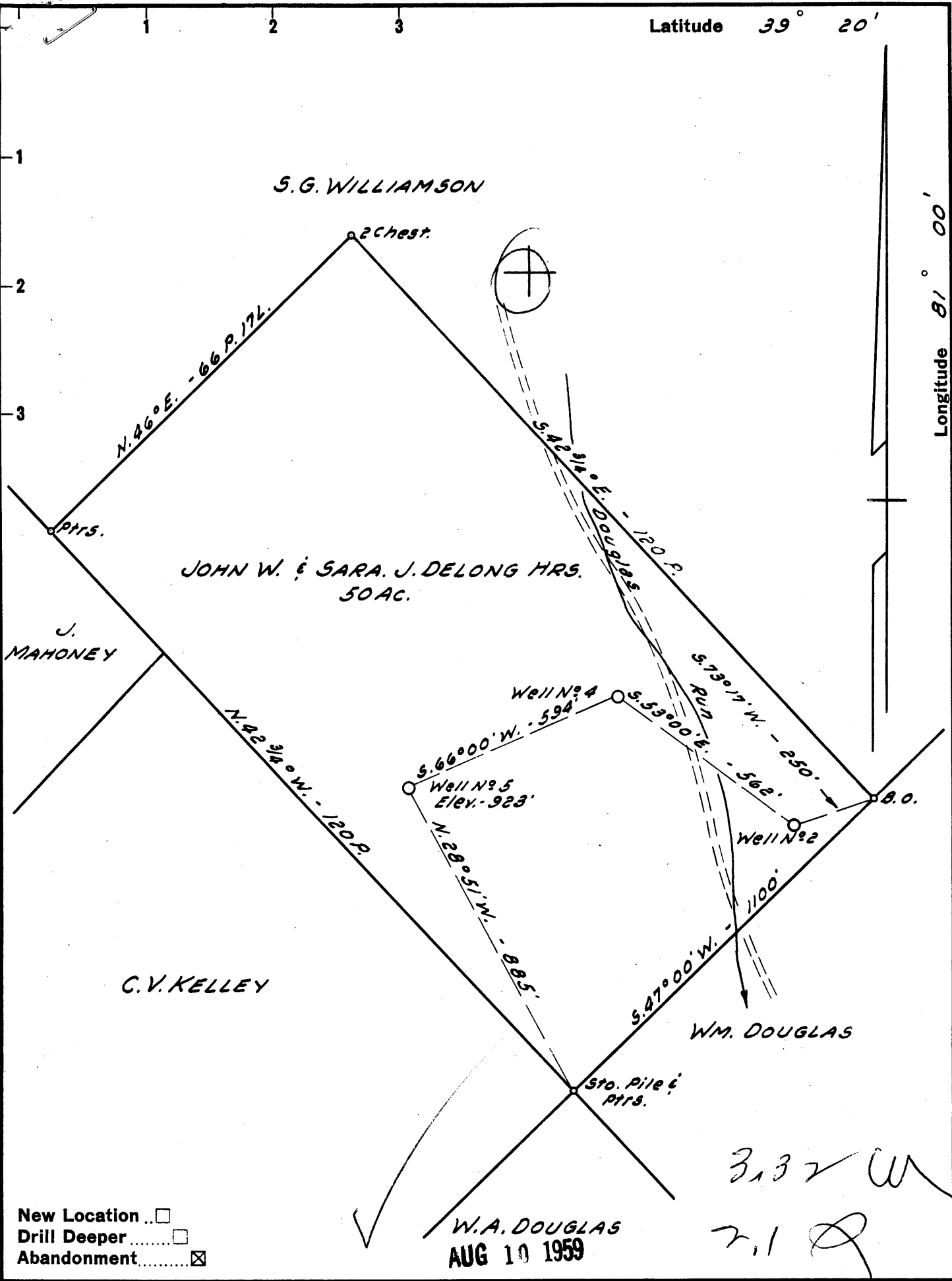


Latitude 39° 20'

Longitude 81° 00'



New Location ..   
 Drill Deeper .....   
 Abandonment .....

W.A. DOUGLAS  
 AUG 10 1959

Company HANLON OIL CO.  
 Address HARRISVILLE, W. VA.  
 Farm JOHN W. & SARA J. DELONG  
 Tract \_\_\_\_\_ Acres 50 Lease No. \_\_\_\_\_  
 Well (Farm) No. 5 Serial No. \_\_\_\_\_  
 Elevation (Spirit Level) 923'  
 Quadrangle ST. MARYS  
 County RITCHIE District CLAY  
 Engineer JOHN W. HAMILTON  
 Engineer's Registration No. 2274  
 File No. \_\_\_\_\_ Drawing No. \_\_\_\_\_  
 Date JULY 12, 1959 Scale 1" = 20 POLES

STATE OF WEST VIRGINIA  
 DEPARTMENT OF MINES  
 OIL AND GAS DIVISION  
 CHARLESTON

**WELL LOCATION MAP**  
 FILE NO. RIT-1301-A

+ Denotes location of well on United States Topographic Maps, scale 1 to 62,500, latitude and longitude lines being represented by border lines as shown.

- Denotes one inch spaces on border line of original tracing.

JOHN W. & SARA J. DELONG NO. 5 - HANLON OIL CO. - RIT-1301-A



1147

STATE OF WEST VIRGINIA  
DEPARTMENT OF MINES  
OIL AND GAS DIVISION

Quadrangle St. Marys

Permit No. 1301-A

WELL RECORD

Oil or Gas Well \_\_\_\_\_  
(KIND)

Company HANLON OIL COMPANY  
 Address SISTERSVILLE, W. VA.  
 Farm DELONG, HEIRS *John W. 50 Acres*  
 Location (waters) BONDS CREEK  
 Well No. 5 Elev. 953  
 District CLAY County RITCHIE  
 The surface of tract is owned in fee by \_\_\_\_\_  
 Address \_\_\_\_\_  
 Mineral rights are owned by \_\_\_\_\_  
 Address \_\_\_\_\_  
 Drilling commenced \_\_\_\_\_  
 Drilling completed \_\_\_\_\_  
 Date Shot 9/14/04 From \_\_\_\_\_ To \_\_\_\_\_  
 With 60 qts.  
 Open Flow \_\_\_\_\_ /10ths Water in \_\_\_\_\_ Inch  
 \_\_\_\_\_ /10ths Merc. in \_\_\_\_\_ Inch  
 Volume \_\_\_\_\_ Cu. Ft.  
 Rock Pressure \_\_\_\_\_ lbs. \_\_\_\_\_ hrs.  
 Oil 25 bbls., 1st 24 hrs.  
 WELL ACIDIZED \_\_\_\_\_  
 WELL FRACTURED \_\_\_\_\_

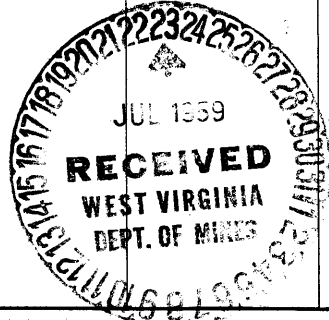
Casing and Tubing	Used in Drilling	Left in Well	Packers
Size			Kind of Packer _____
16			
13			
10			Size of _____
8 1/4			
6 5/8	1550	1550	Depth set _____
5 3/16			
3			Perf. top _____
2			Perf. bottom _____
Liners Used			Perf. top _____
			Perf. bottom _____

CASING CEMENTED \_\_\_\_\_ SIZE \_\_\_\_\_ No. Ft. \_\_\_\_\_ Date \_\_\_\_\_

COAL WAS ENCOUNTERED AT \_\_\_\_\_ FEET \_\_\_\_\_ INCHES  
 \_\_\_\_\_ FEET \_\_\_\_\_ INCHES FEET \_\_\_\_\_ INCHES  
 \_\_\_\_\_ FEET \_\_\_\_\_ INCHES FEET \_\_\_\_\_ INCHES

RESULT AFTER TREATMENT \_\_\_\_\_  
 ROCK PRESSURE AFTER TREATMENT \_\_\_\_\_  
 Fresh Water \_\_\_\_\_ Feet Salt Water \_\_\_\_\_ Feet

Formation	Color	Hard or Soft	Top	Bottom	Oil, Gas or Water	Depth	Remarks
Sand			1898		Gas, 1898		
DEPTH OF THE WELL				1918	Oil, 1900-1915		



NOV 5 1959

