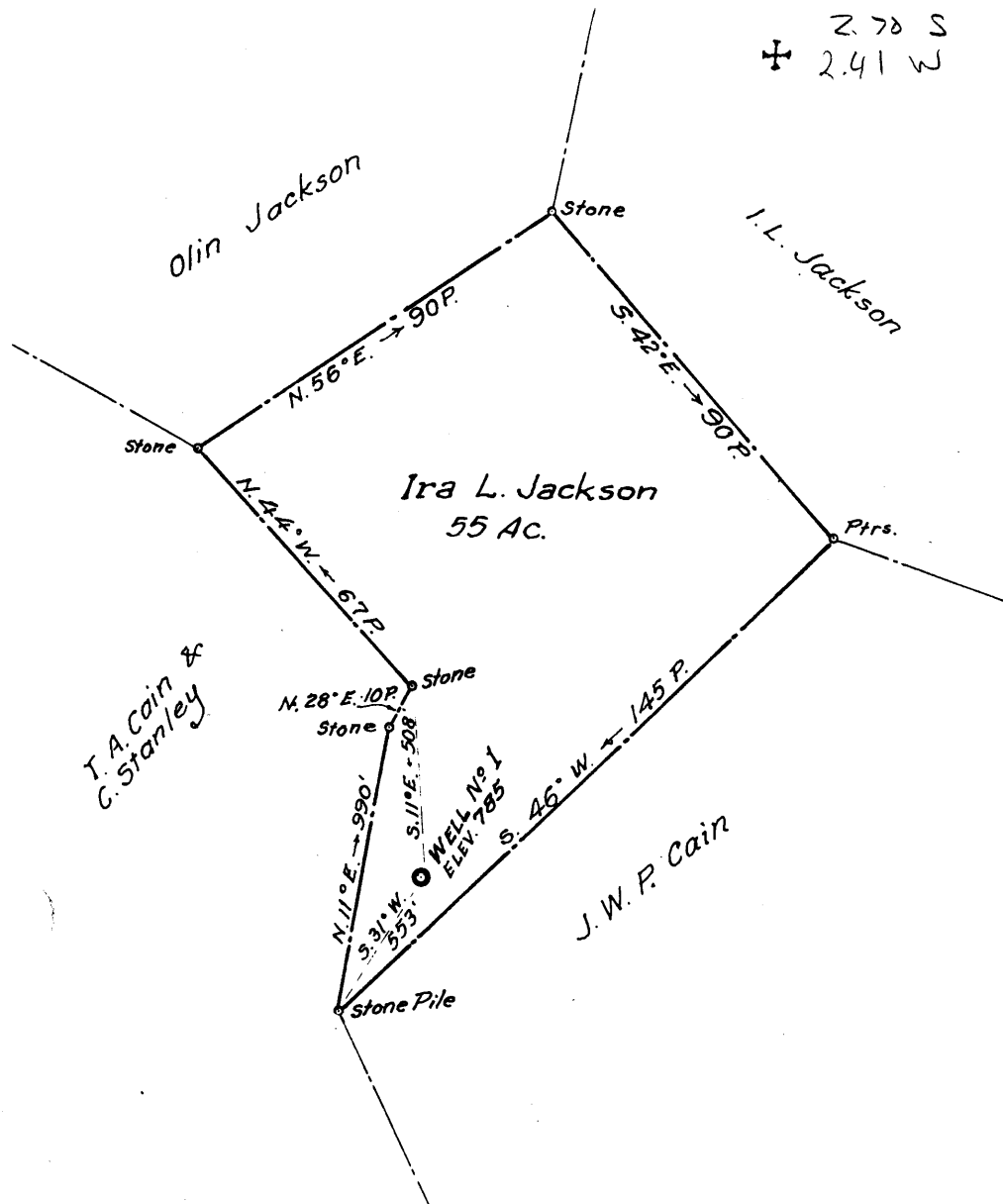


Latitude 39° 10'

Longitude 81° 10'



New Location  
 Drill Deeper   
 Abandonment

Company R. C. Jackson  
 Address Petroleum, W. Va.  
 Farm Ira L. Jackson  
 Tract \_\_\_\_\_ Acres 55 Lease No. \_\_\_\_\_  
 Well (Farm) No. 1 Serial No. \_\_\_\_\_  
 Elevation (Spirit Level) 785  
 Quadrangle Harrisville  
 County Ritchie District Grant  
 Engineer Parker E. Peters  
field by W.P. Ireland  
 Engineer's Registration No. 485  
 File No. \_\_\_\_\_ Drawing No. \_\_\_\_\_  
 Date Oct. 10, 1958 Scale 1" = 40 P.

STATE OF WEST VIRGINIA  
 DEPARTMENT OF MINES  
 OIL AND GAS DIVISION  
 CHARLESTON

WELL LOCATION MAP

FILE NO. Rit-1288-A

(CORRECTED)

+ Denotes location of well on United States Topographic Maps, scale 1 to 62,500, latitude and longitude lines being represented by border lines as shown.

- Denotes one inch spaces on border line of original tracing.

McGREGOR & WILSON NO. 1 WELL.

Grant District, Ritchie County, W. Va.

By E. C. Jackson and G. C. Loomis, Petroleum, W. Va.

Abandoned under permit Rit-1288-A?

On 50 acres, on Gillespie Run.

Elevation,.....(?) No plat.

Surface ~~xxxxxxxxxx~~ owned by Wilson & McGregor, and minerals by

Wilson & Richards, Parkersburg and Cairo, W. Va.

Drilling commenced Dec. 1, 1926; completed Dec. 26, 1926.

Well was not shot.

Open flow, 8/10ths W. in 2".

Volume, 119,000 cu. ft.

10" casing, 190' (pulled); 8 1/2", 930' (pulled); 5 1/2", 1730'; 2" tubing, 1921'.

Gas well. Record to Dept. of Mines stamped Sept. 24 and Oct. 20, 1958.

Record to RCT from Mrs. Griffith Dec. 20, 1958. Old File No. 1127.

	Top.	Bottom.
Red rock, slate and shells, from surface to		1253
Dunkard Sand	1253	- 1270
Gas Sand and shells	1270	- 1393
Slate	1393	- 1472
Slate shells	1472	- 1500
Slate	1500	- 1615
Maxton Sand	1615	- 1686
Lime	1686	- 1747
Keener Sand	1747	- 1776
Big Injun Sand	1776	- 1895
Break	1895	- 1900
Squaw Sand	1900	- 1920
Total depth		1920