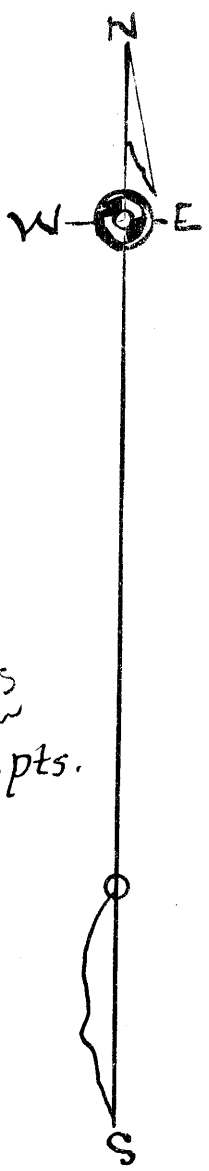
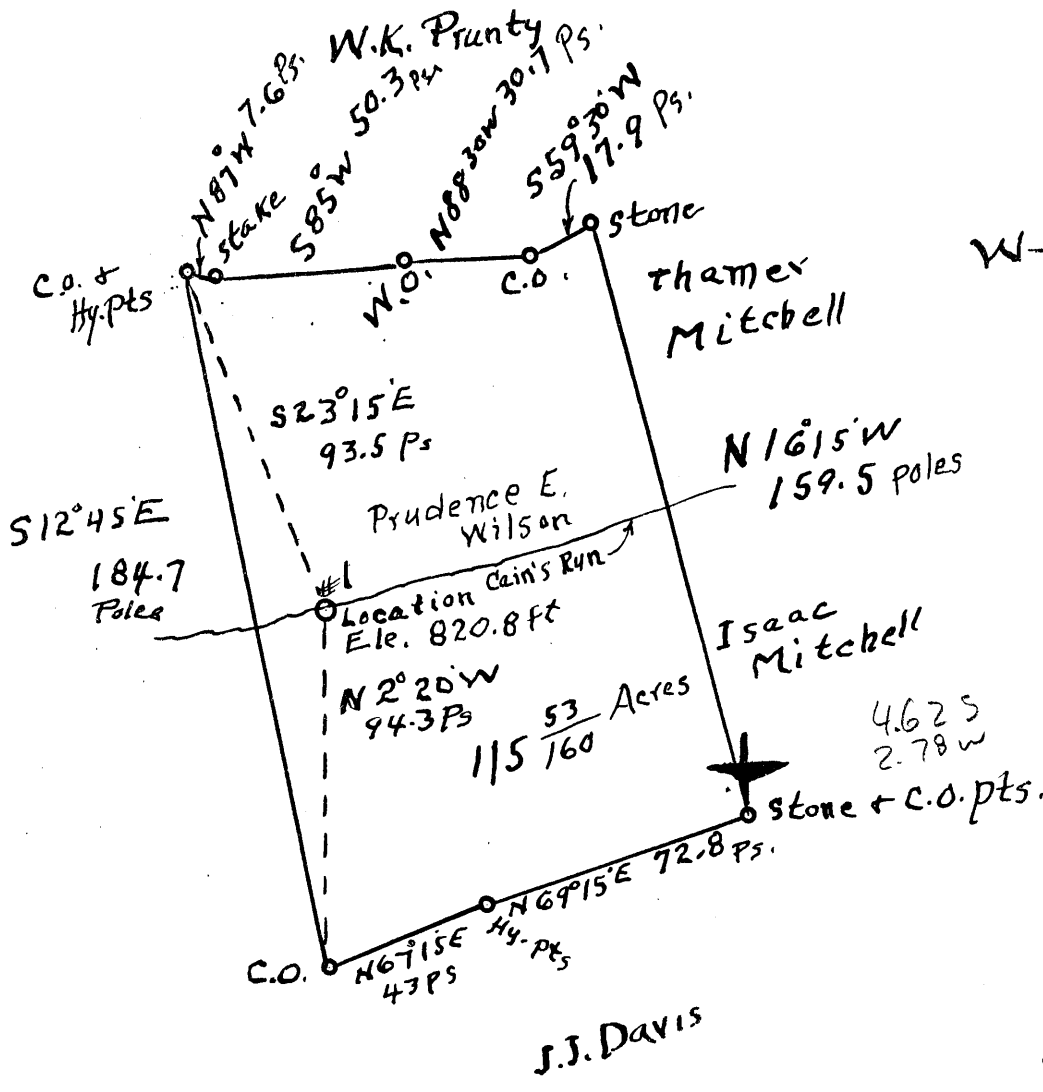


Latitude 39° 10'

1 2 3

1
2
3



80° 55'

Longitude

New Location...
 Drill Deeper.....
 Abandonment.....

Company Spruce Oil and Gas Co.
 Address Jane Lew, W.Va.
 Farm Prudence E. Wilson
 Tract 1 Acres 115 ⁵³/₁₆₀ Lease No. _____
 Well (Farm) No. 1 Serial No. _____
 Elevation (Spirit Level) 820.8
 Quadrangle Holbrook
 County Ritchie District Murphy
 Engineer M. W. B. Hinger
 Engineer's Registration No. 261
 File No. _____ Drawing No. _____
 Date 6-7-1954 Scale 1" = 50 poles

STATE OF WEST VIRGINIA
 DEPARTMENT OF MINES
 OIL AND GAS DIVISION
 CHARLESTON

WELL LOCATION MAP
 FILE NO. Rit-1236-A

+ Denotes location of well on United States Topographic Maps, scale 1 to 62,500, latitude and longitude lines being represented by border lines as shown.
 - Denotes one inch spaces on border line of original tracing.