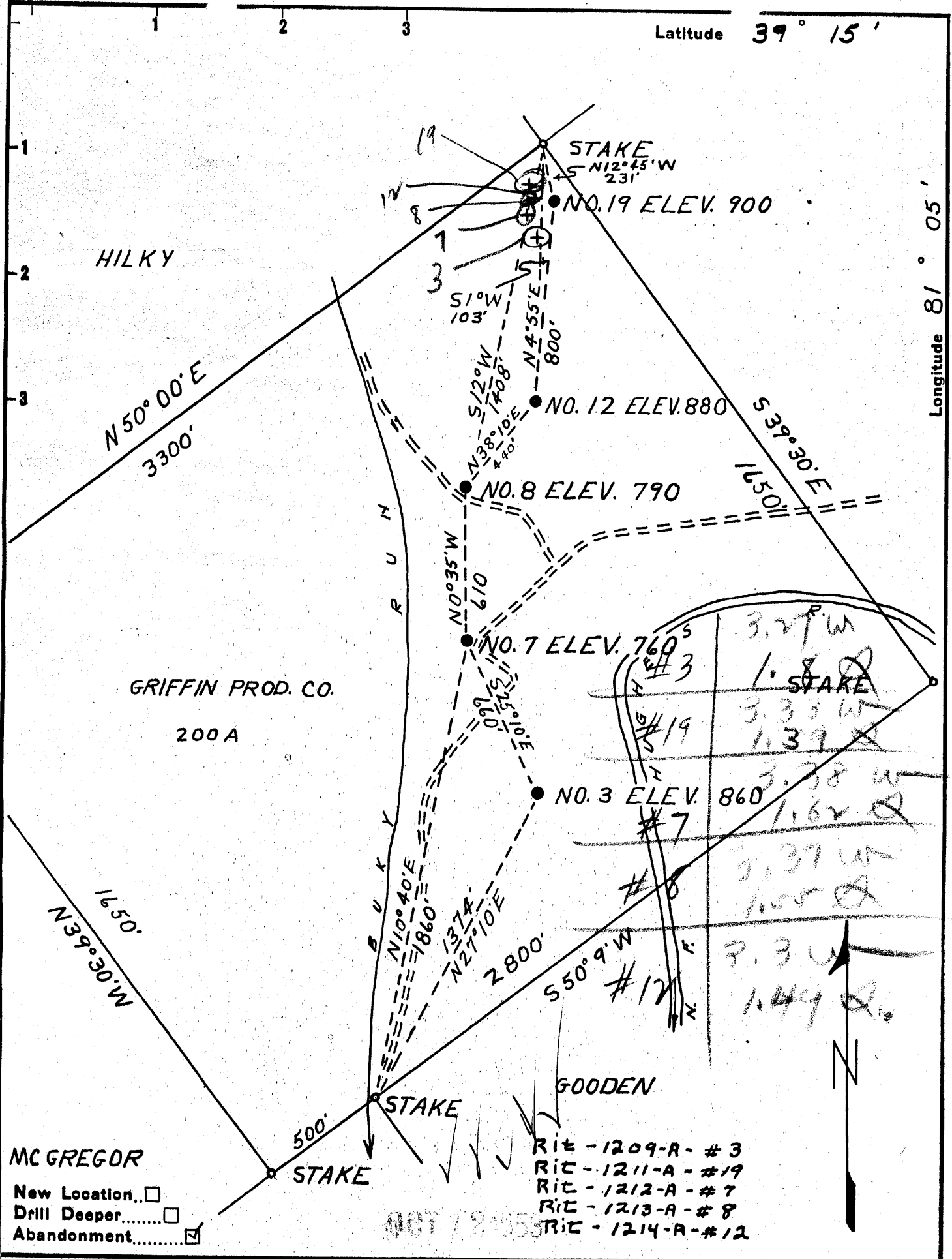


Latitude 39° 15'

Longitude 81° 05'



New Location  
 Drill Deeper  
 Abandonment

RIT - 1209-A - #3  
 RIT - 1211-A - #19  
 RIT - 1212-A - #7  
 RIT - 1213-A - #8  
 RIT - 1214-A - #12

Company BURGY AND MARSHALL  
 Address CAIRO, W. VA.  
 Farm GRIFFIN PROD. CO.  
 Tract \_\_\_\_\_ Acres 200 Lease No. \_\_\_\_\_  
 Well (Farm) No. 3-7-8-12-19 Serial No. \_\_\_\_\_  
 Elevation (Spirit Level) SEE PLAT  
 Quadrangle HARRISVILLE  
 County RITCHIE District GRANT  
 Engineer B. F. RINEHART  
 Engineer's Registration No. 648  
 File No. \_\_\_\_\_ Drawing No. \_\_\_\_\_  
 Date 9-26-53 Scale 1" = 500'

STATE OF WEST VIRGINIA  
 DEPARTMENT OF MINES  
 OIL AND GAS DIVISION  
 CHARLESTON

**WELL LOCATION MAP**  
 FILE NO. See Above

+ Denotes location of well on United States Topographic Maps, scale 1 to 62,500, latitude and longitude lines being represented by border lines as shown.  
 - Denotes one inch spaces on border line of original tracing.

GRIFFIN PROD. Co. Wps 3, 7, 8, & 12 = BURGY & MARSHALL - RIT-1209-A,