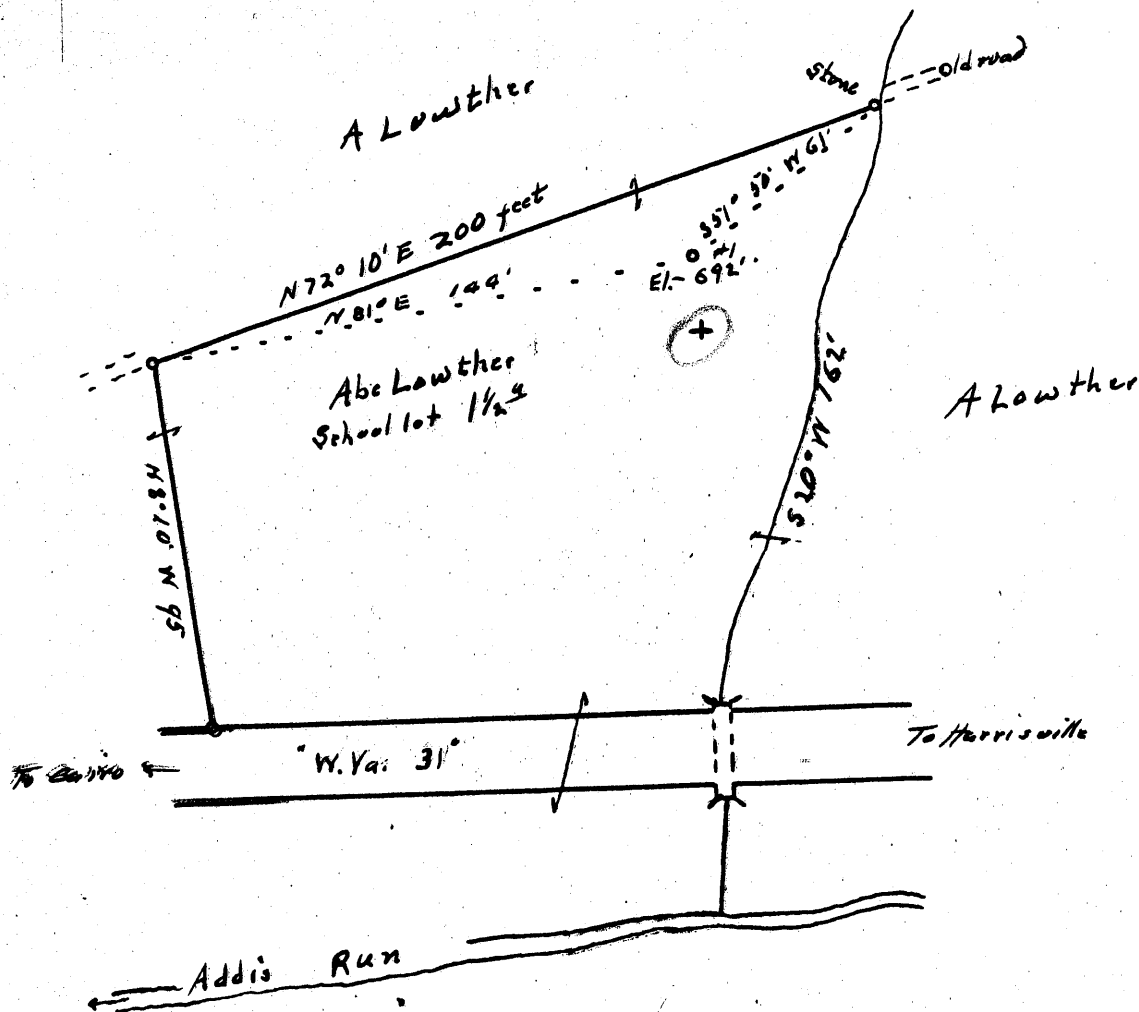


Latitude 39° 15'

Longitude 81° 05'



New Location   
 Drill Deeper   
 Abandonment

AUG 1 1954

Company Arthur S. Moats  
 Address Parkersburg, W. Va.  
 Farm Abe Lowther  
 Tract \_\_\_\_\_ Acres 1/2 Lease No. \_\_\_\_\_  
 Well (Farm) No. 1 Serial No. \_\_\_\_\_  
 Elevation (Spirit Level) 692'  
 Quadrangle Harrisville  
 County Ritchie District Grant  
 Engineer Robert R. Osden  
 Engineer's Registration No. 296  
 File No. \_\_\_\_\_ Drawing No. \_\_\_\_\_  
 Date 7/25 Scale 1 in = 50 feet

STATE OF WEST VIRGINIA  
 DEPARTMENT OF MINES  
 OIL AND GAS DIVISION  
 CHARLESTON

WELL LOCATION MAP  
 FILE NO. RIT-1202-A

+ Denotes location of well on United States Topographic Maps, scale 1 to 62,500, latitude and longitude lines being represented by border lines as shown.

- Denotes one inch spaces on border line of original tracing.

ABE LOWTHER NO. 1 — ARTHUR S. MOATS — RIT-1202-A