

New Location  
 Drill Deeper  
 Abandonment

SEP 22 1947

HARLEY MAHONEY  
 152 A.

# 21	3.53 W
	2.07
# 22	3.09 W
	2.0
# 23	3.16 W
	1.91
# 24	3.71 W
	1.83

Company OTTO NELLE OIL & GAS CO.  
 Address CORNWALLIS, W. VA.  
 Farm HARLEY MAHONEY  
 Tract \_\_\_\_\_ Acres 152 Lease No. \_\_\_\_\_  
 Well (Farm) No. 21, 22, 23, 24 Serial No. \_\_\_\_\_  
 Elevation (Spirit Level) 971, 990.6, 1014.6, 999.8  
 Quadrangle HARRISVILLE  
 County RITCHIE District GRANT  
 Engineer B. F. RINEHART  
 Engineer's Registration No. 648  
 File No. \_\_\_\_\_ Drawing No. 634-GR  
 Date July 30, 1947 Scale 1 in = 500 ft.

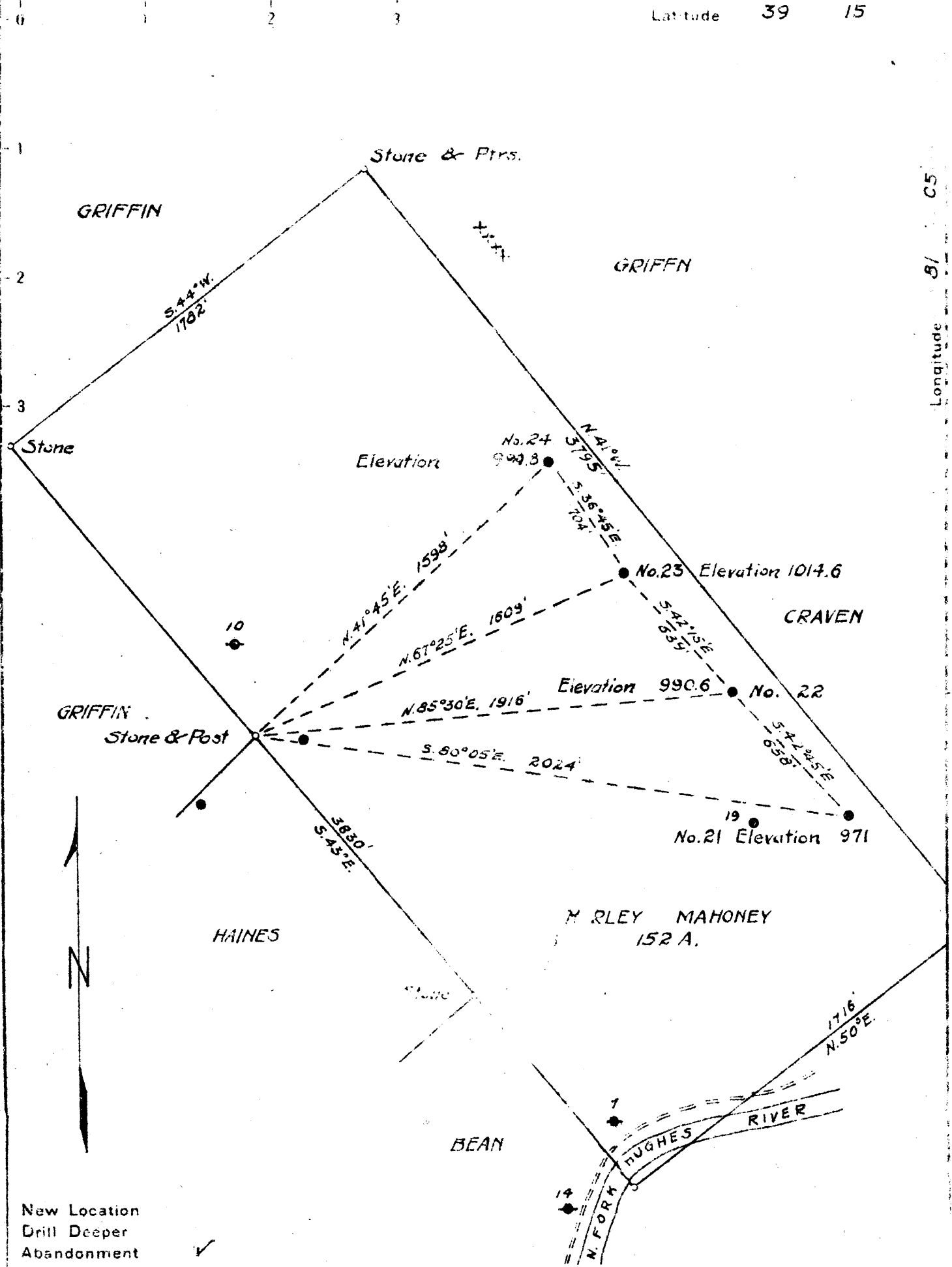
STATE OF WEST VIRGINIA  
 DEPARTMENT OF MINES  
 OIL AND GAS DIVISION  
 CHARLESTON

**WELL LOCATION MAP**

Rit-795-A-#23  
 Rit-797-A-#22  
 Rit-792-A-#24

+ Denotes location of well on United States Topographic Maps, scale 1 to 62,500, latitude and longitude lines being represented by border lines as shown.

- Denotes one inch spaces on border line of original tracing.



New Location  
 Drill Deeper  
 Abandonment ✓

Company OTTO NELLE OIL & GAS CO.  
 Address CORNWALLIS, W. VA.  
 Farm HARLEY MAHONEY  
 Tract \_\_\_\_\_ Acres 152 Lease No. \_\_\_\_\_  
 Well (Farm) No. 21, 22, 23, 24 Serial No. \_\_\_\_\_  
 Elevation (Spirit Level) 971, 990.6, 1014.6, 990.8  
 Quadrangle HARRISVILLE  
 County RITCHIE District GRANT  
 Engineer B. F. RINEHART  
 Engineer's Registration No. 648  
 File No. \_\_\_\_\_ Drawing No. 634-GR  
 Date July 30, 1947 Scale 1 in. = 500 ft.

STATE OF WEST VIRGINIA  
 DEPARTMENT OF MINES  
 OIL AND GAS DIVISION  
 CHARLESTON

**WELL LOCATION MAP**

RIC-795-A-#21 RIC-798-A-#21  
RIC-797-A-#23 RIC-797-A-#22  
RIC-792-A-#24

+ Denotes location of well on United States Topographic Maps, scale 1 to 62,500. Latitude and longitude lines being represented by border lines as shown.

- Denotes one inch spaces on border line of original tracing.