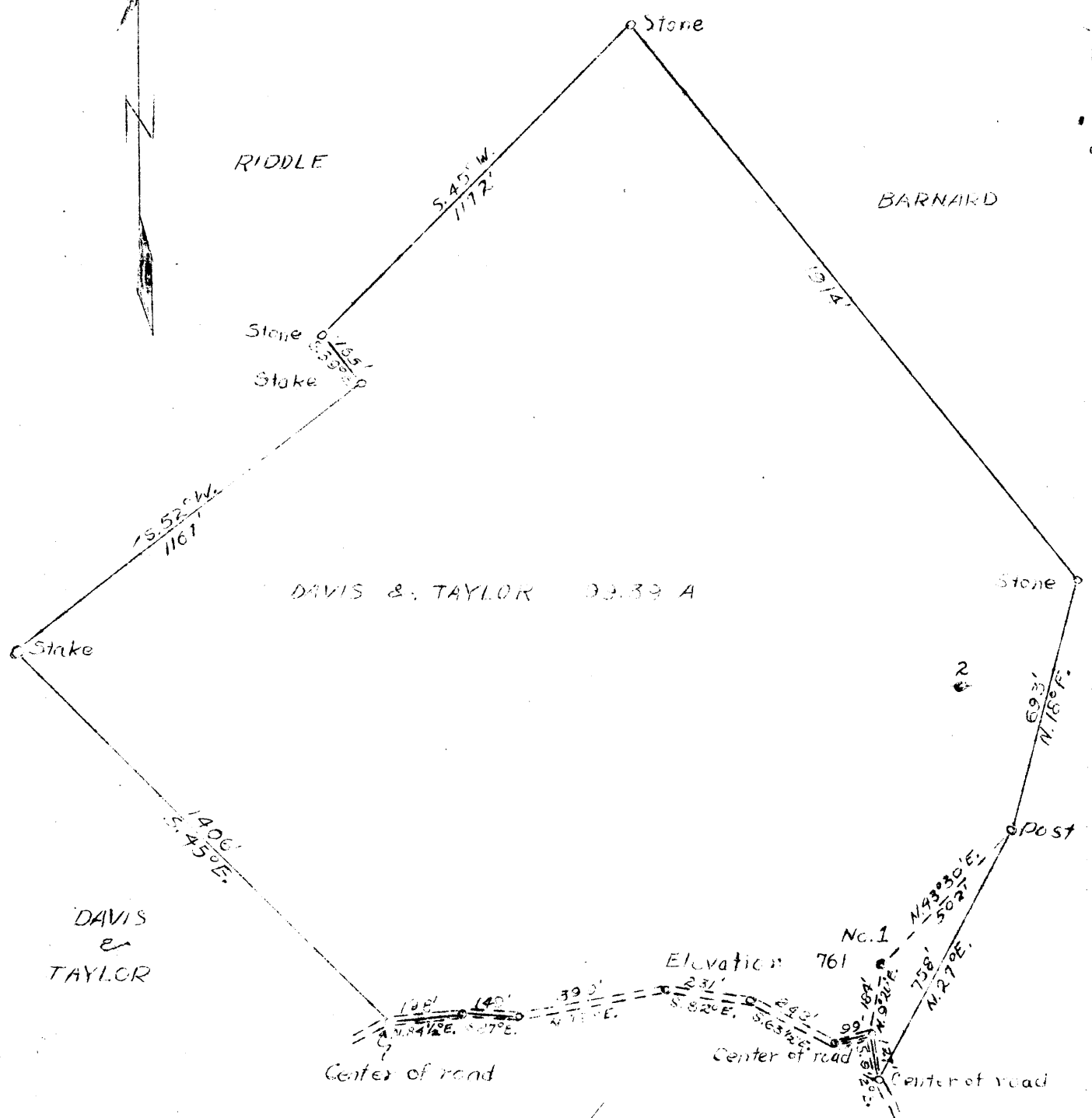


Latitude 39° 15'

Longitude 80° 55'



- New Location
- Drill Deeper
- Abandonment

✓ APR 22 1947

3.5 W  
0.61

Company **MCCALL DRILLING CO.**  
 Address **PITTSBURGH, PA.**  
 Farm **DAVIS & TAYLOR**  
 Tract Acres **99.39** Lease No. \_\_\_\_\_  
 Well (Farm) No. **1** Serial No. **20**  
 Elevation (Spirit Level) **761**  
 Quadrangle **HCLBROCK**  
 County **RITCHIE** District **CLAY**  
 Engineer **T. F. Reinhart**  
 Engineer's Registration No. **648**  
 File No. \_\_\_\_\_ Drawing No. **197-C-R**  
 Date **Aug. 24, 1939** Scale **1 in. = 400 ft.**

**NW**

STATE OF WEST VIRGINIA  
 Department of Mines  
 OIL AND GAS DIVISION  
 Charleston

WELL LOCATION MAP  
 File No. **RIT - 780 - A**

+Denotes location of well on United States Topographic Maps, scale 1 to 62,500, latitude and longitude lines being represented by border lines as shown.

-Denotes one inch spaces on border line of original tracing.

HOCKER WILSON NO. 1 (26) WELL.

Clay District, Ritchie County, W. Va.

By McCall Drilling Co., 612 Keystone Bldg., Pittsburgh, Pa.

Abandoned under permit #17-.....-A?

On 9.39 acres, on Beason Run.

Elevation, 761' l.

Surface owned by Hocker Wilson, Pennshoro, W. Va., and minerals by

David & Taylor et al., Pennshoro, W. Va.

Drilling commenced June 27, 1927; completed July 29, 1927.

Shot Aug. 19, 1927, at 1781-1787', with 30 qts. nitroglycerine.

Oil, 5 bbls., 1st 24 hrs.

10" casing, 221' (pulled); 8 1/2", 905' (pulled); 6", 1635'; 5", 1764';

3" tubing, 1807'.

Oil well. Abandonment reported to Dept. of Mines (not dated or stamped).

Record to 107 from Mrs. Griffith Aug. 20, 1947. Old File No. 738.

|  | Top. | Bottom. |
|--|------|---------|
| Little Darkard Sand                        | 760  | - 770   |
| Big Darkard Sand                           | 870  | - 860   |
| Gas Sand (small oil, 1060') (water, 1060') | 1050 | - 1075  |
| 1st Salt Sand (water, 1240')               | 1110 | - 1375  |
| 2nd Salt Sand                              | 1395 | - 1420  |
| 3rd Salt Sand                              | 1445 | - 1475  |
| Maxton Sand (show gas and oil, 1544')      | 1520 | - 1588  |
| Little Line                                | 1593 | - 1611  |
| Pencil Cove                                | 1615 | - 1623  |
| Big Line                                   | 1623 | - 1690  |
| Big Injun Sand (show oil, 1695')           | 1690 | - 1762  |
| Squaw Sand (show oil and gas, 1783-1787')  | 1764 | - 1787  |
| Squaw Sand                                 | 1788 | - 1800  |
| Total depth                                |      | 1807    |