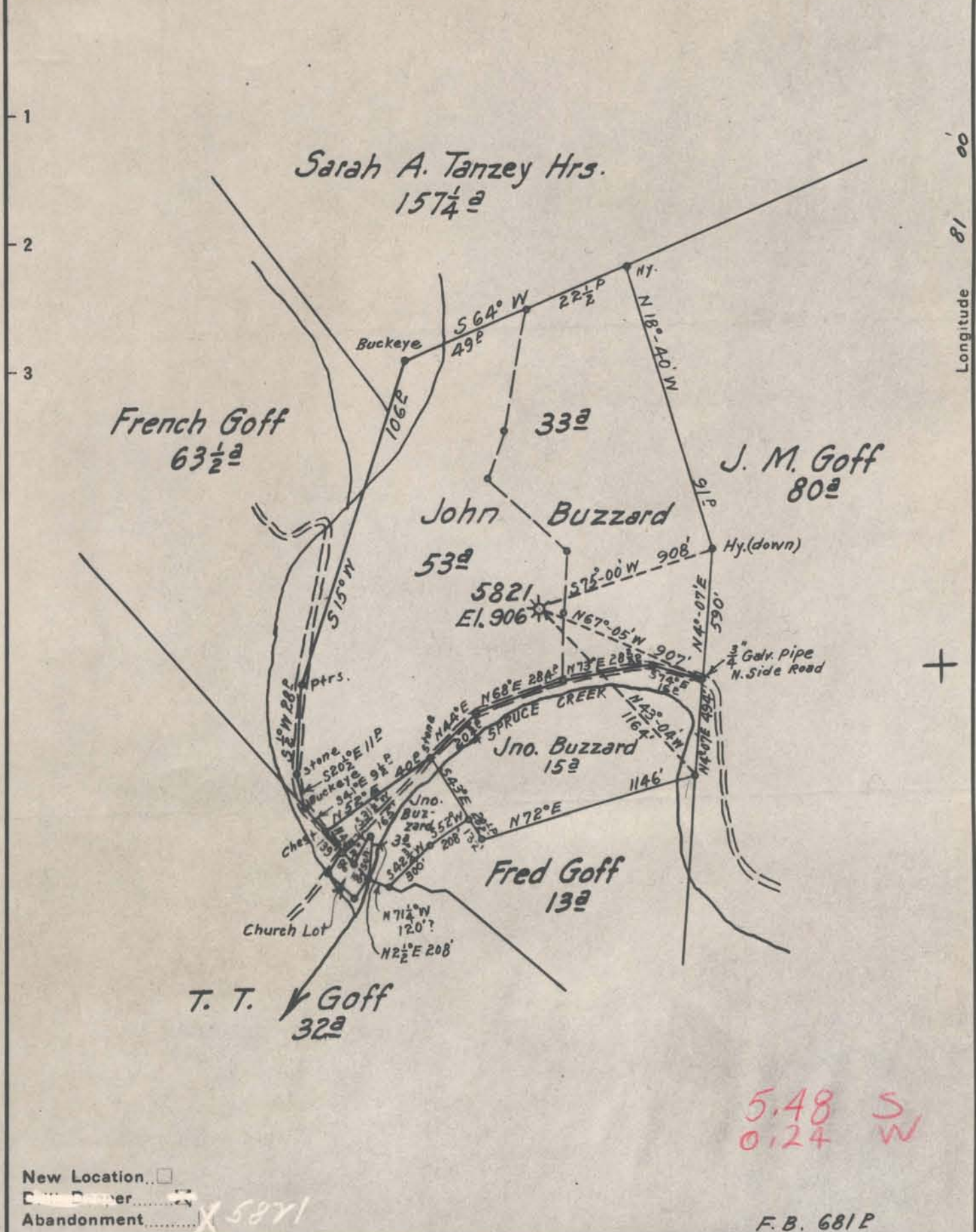


Latitude 39 10



5.48 S  
0.24 W

New Location   
 Corner   
 Abandonment

X 5821

F. B. 681 P

Company Hope Natural Gas Co.  
 Address Clarksburg, W. Va.  
 Farm John Buzzard  
 Tract \_\_\_\_\_ Acres 86 Lease No. 11553  
 Well (Farm) No. \_\_\_\_\_ Serial No. 5821  
 Elevation (Spirit Level) 906  
 Quadrangle Harrisville  
 County Ritchie District Murphy  
 Engineer Wm Bowers  
 Engineer's Registration No. 900  
 File No. \_\_\_\_\_ Drawing No. \_\_\_\_\_  
 Date Nov. 10, 1939 Scale 1" = 40'

STATE OF WEST VIRGINIA  
 DEPARTMENT OF MINES  
 OIL AND GAS DIVISION  
 CHARLESTON

WELL LOCATION MAP

FILE NO. RIT-736 A #5821

+ Denotes location of well on United States Topographic Maps, scale 1 to 62,500, latitude and longitude lines being represented by border lines as shown.  
 - Denotes one inch spaces on border line of original tracing.



Murphy District, Ritchie County, W. Va.

By Hope Natural Gas Co., 445 W. Main St., Clarksburg, W. Va.

Abandoned under permit Rit-.....-A.

On 86 acres.

Elevation, 906' L.

Surface owned by John Buzzard, Hazel Green, W. Va.

Drilling commenced Dec. 30, 1920; completed Jan. 20, 1921.

Shot Dec. 11, 1939, at 1950-1970', with 40 qts.

Open flow, 40/10ths W. in 1 1/2" F. M.

Volume, 107,000 cu. ft.

Rock pressure, 52 lbs.

Salt water at 1570'.

10" casing, 232'; 8 1/2", 1061'; 6 1/2", 1877'; 3" tubing, 196'; 2", 1913';  
all left in.

Casing not cemented.

No coal reported.

Gas well. Abandonment reported to Dept. of Mines Aug. 20, 1945.

Record to RCT from Mrs. Griffith Sept. 18, 1945. Old File No. 653.

	Top.	Bottom.
Little Dunkard Sand	860	- 875
Big Dunkard Sand	965	- 975
Gas Sand	1215	- 1350
First Salt Sand (water, 1570')	1570	- 1620
Second Salt Sand	1635	- 1685
Marion Sand (gas, 1730-1735') (gas, 1750-1758')	1720	- 1758
Big Lime	1849	- 1916
Big Injun Sand (gas, 1950-1956')	1916	- 1964
Total depth		2094





653

STATE OF WEST VIRGINIA  
DEPARTMENT OF MINES  
OIL AND GAS DIVISION

WELL RECORD

Permit No. W-7-786-A

Oil or Gas Well Gas  
(KIND)

Company Hope Natural Gas Company  
Address 445 W. Main St. Clarksburg, W. Va.  
Farm John Buzzard Acres 86  
Location (waters) \_\_\_\_\_  
Well No. 5821 Elev. 906  
District Murphy County Ritchie  
The surface of tract is owned in fee by John Buzzard  
Address Hazel Green, W. Va.  
Mineral rights are owned by \_\_\_\_\_  
Address \_\_\_\_\_  
Drilling commenced 12-30-1929  
Drilling completed 1-20-1921  
Date Shot 12/11/39 From 1950 To 1970  
With 40 qts  
Open Flow 40 /10ths Water in 1 1/2" FM Inch  
/10ths Merc. in \_\_\_\_\_ Inch  
Volume 107 M Cu. Ft.  
Rock Pressure 52 lbs. \_\_\_\_\_ hrs.  
Oil \_\_\_\_\_ bbls., 1st 24 hrs.  
Fresh water \_\_\_\_\_ feet \_\_\_\_\_ feet  
Salt water 1570 feet \_\_\_\_\_ feet

Casing and Tubing	Used in Drilling	Left in Well	Packers
Size			
16			Kind of Packer
13			
10	<u>232</u>	<u>232</u>	Size of
8 3/4	<u>1061</u>	<u>1061</u>	
6 5/8	<u>1877</u>	<u>1877</u>	Depth set
5 3/16			
3	<u>196</u>	<u>196</u>	Perf. top
2	<u>1913</u>	<u>1913</u>	Perf. bottom
Liners Used			Perf. top
			Perf. bottom

CASING CEMENTED \_\_\_\_\_ SIZE \_\_\_\_\_ No. Ft. \_\_\_\_\_ Date \_\_\_\_\_  
**Not cemented**  
COAL WAS ENCOUNTERED AT None recorded FEET \_\_\_\_\_ INCHES  
\_\_\_\_\_ FEET \_\_\_\_\_ INCHES FEET \_\_\_\_\_ INCHES  
\_\_\_\_\_ FEET \_\_\_\_\_ INCHES FEET \_\_\_\_\_ INCHES

Formation	Color	Hard or Soft	Top	Bottom	Oil, Gas or Water	Depth Found	Remarks
Little Dunkard			860	875			
Big Dunkard			965	975			
Gas Sand			1215	1350			
First Salt			1570	1620	Water	1570	
Second Salt			1635	1685	Gas	1730-1735	
					Gas	1750-1758	
Maxon			18x 1720	1758			
Big Lime			1849	1916			
Big Injun			1916	1864(1964)	Gas	1950-1958	
Total depth				2094			



SEP 16 1945



