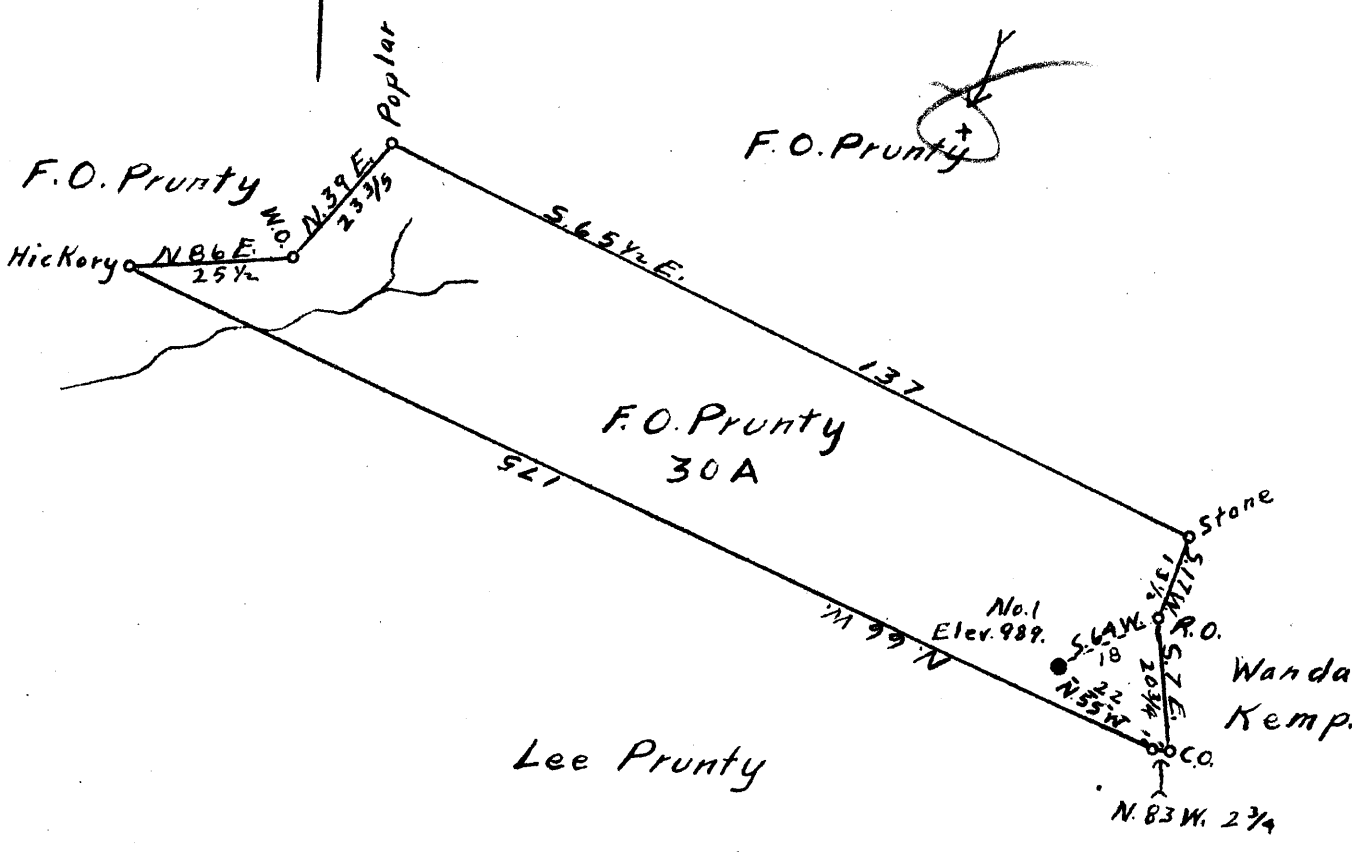


Latitude 39° 15'

Longitude 80° 50'



3.70 S
2.30 W

New Location
 Drill Deeper
 Abandonment

Company Earl Goodwin
 Address Jane Lew. West Virginia
 Farm F.O. Prunty
 Tract _____ Acres 30 Lease No. _____
 Well (Farm) No. One Serial No. _____
 Elevation (Spirit Level) 989
 Quadrangle Holbrook
 County Ritchie District Union
 Engineer A.K. Westfall
 Engineer's Registration No. Co. Surveyor Ritchie, Co
 File No. _____ Drawing No. _____
 Date May 27, 1942 Scale 1" = 30 Poles

STATE OF WEST VIRGINIA
 DEPARTMENT OF MINES
 OIL AND GAS DIVISION
 CHARLESTON

WELL LOCATION MAP
 FILE NO. BIT-608-A

+ Denotes location of well on United States Topographic Maps, scale 1 to 62,500, latitude and longitude lines being represented by border lines as shown.

- Denotes one inch spaces on border line of original tracing.