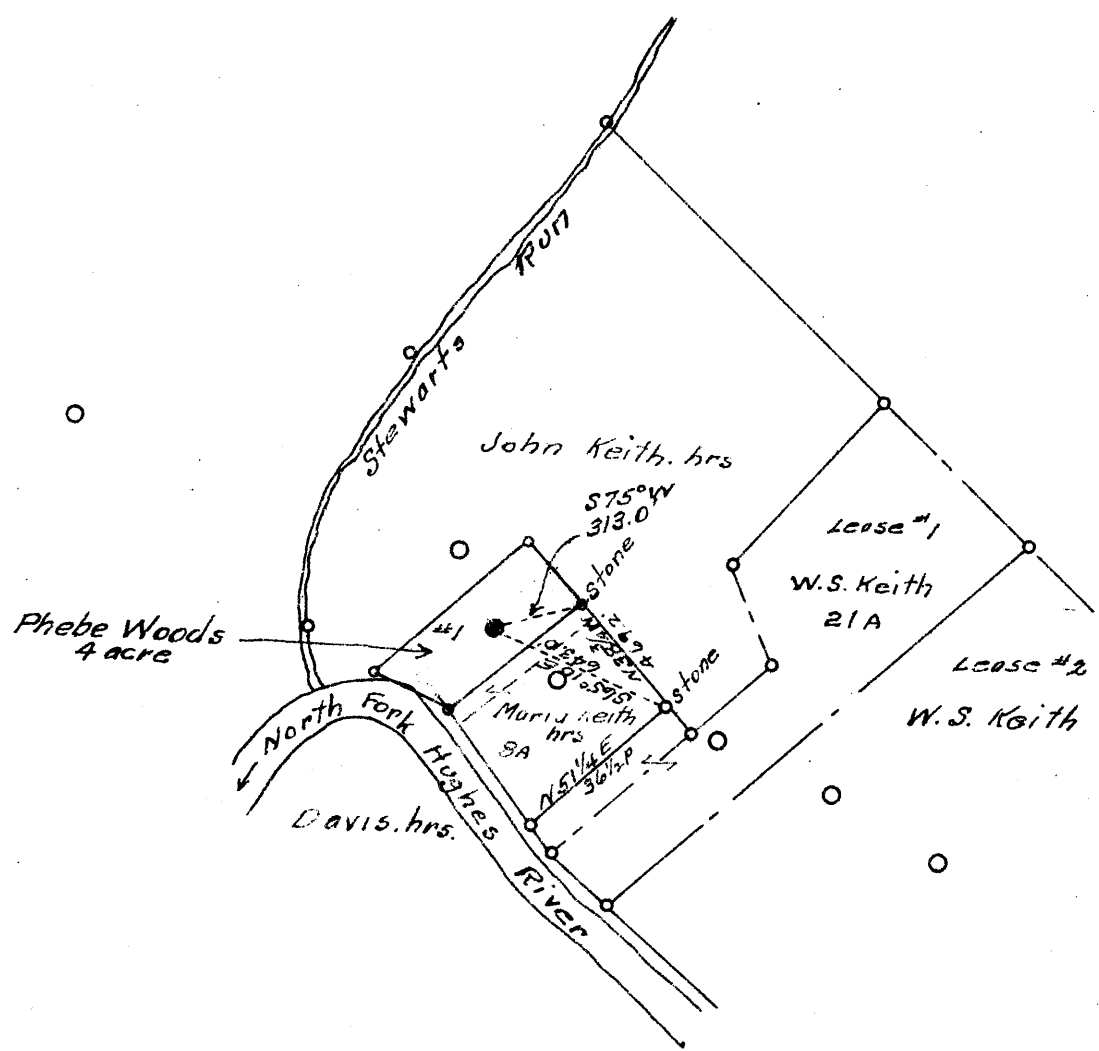


0 1 2 3 Latitude 39° 15'

1
2
3

Longitude 31° 00'



New Location
 Drill Deeper
 Abandonment

Company Reno Oil Co.
 Address Sistersville, W. Va.
 Farm Phebe Woods
 Tract Acres 4 Lease No.
 Well (Farm) No. ONE Serial No.
 Elevation (Spirit Level) 718.0
 Quadrangle Harrisville
 County Ritchie District Clay
 Engineer OW Barnhart
 Engineer's Registration No. Surveyor
 File No. Drawing No.
 Date Sept. 25, 1941 Scale 1" = 400'

STATE OF WEST VIRGINIA
 DEPARTMENT OF MINES
 OIL AND GAS DIVISION
 CHARLESTON

WELL LOCATION MAP
 FILE NO. RI-552A

+ Denotes location of well on United States Topographic Maps, scale 1 to 62,500, latitude and longitude lines being represented by border lines as shown.
 - Denotes one inch spaces on border line of original tracing.