

4.0 W  
0.96 S

- New Location
- Drill Deeper
- Abandonment

Company W. A. BICKERSTAFF

Address HARRISVILLE, W.VA.

Farm C. M. DEEM

Tract \_\_\_\_\_ Acres 46 1/2 Lease No. \_\_\_\_\_

Well (Farm) No. 3 Serial No. \_\_\_\_\_

Elevation (Spirit Level) 916

Quadrangle HARRISVILLE

County RITCHIE District MURPHY

Engineer B. F. Rinehart

Engineer's Registration No. 648

File No. \_\_\_\_\_ Drawing No. 221-M-R

Date Oct. 22, 1939 Scale 1 in. = 300 ft.

STATE OF WEST VIRGINIA  
DEPARTMENT OF MINES  
OIL AND GAS DIVISION  
CHARLESTON

**WELL LOCATION MAP**  
FILE NO. RIT-432A

+ Denotes location of well on United States Topographic Maps, scale 1 to 62,500, latitude and longitude lines being represented by border lines as shown.

- Denotes one inch spaces on border line of original tracing.

Latitude 39° 05'

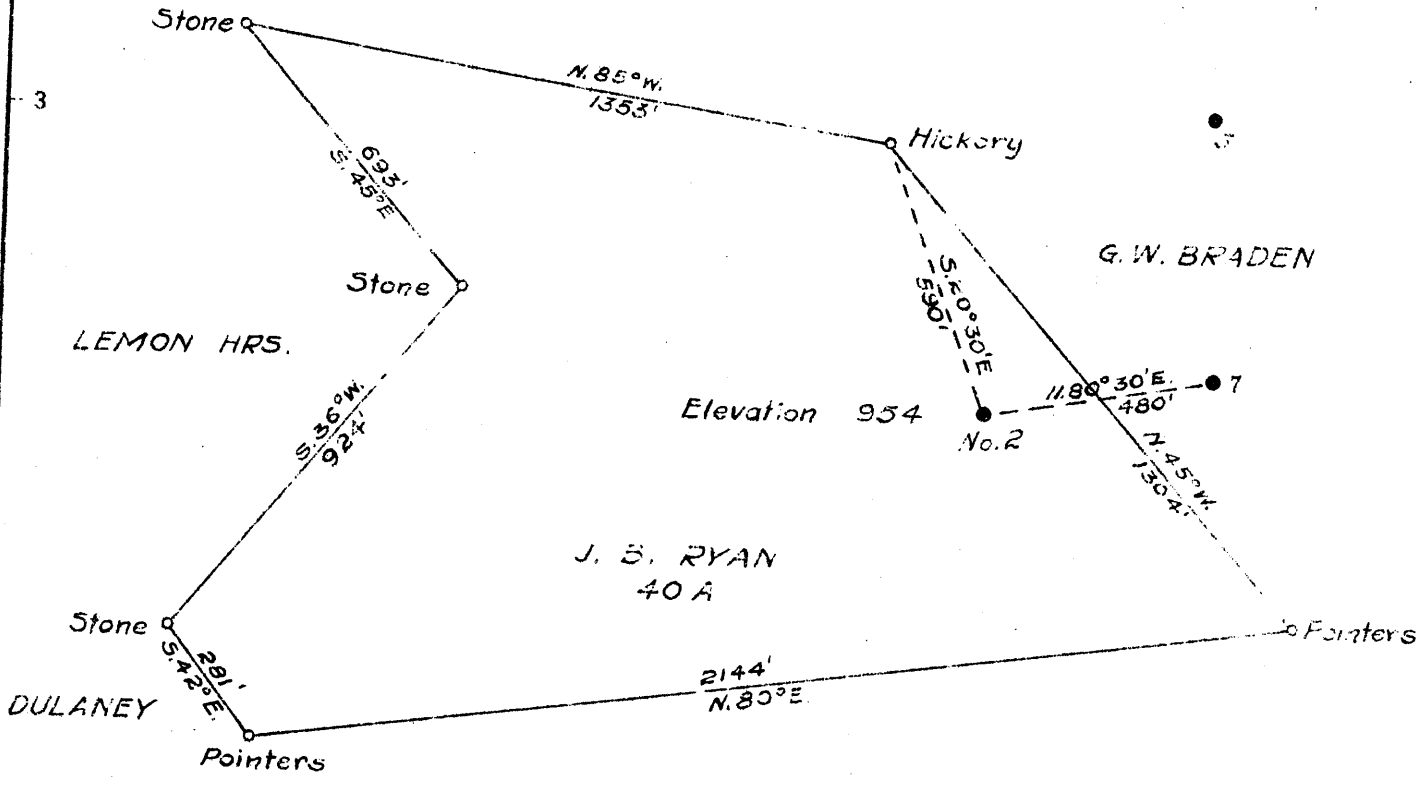
Longitude 81° 05'

LEMON

G. W. BRADEN

J. B. RYAN  
40 A

A. E. BRADEN



N - 4.39  
S - .62

New Location  
Drill Deeper  
Abandonment

Company W. A. BICKERSTAFF  
 Address HARRISVILLE, W. VA.  
 Farm J. B. RYAN  
 Tract \_\_\_\_\_ Acres 40 Lease No. \_\_\_\_\_  
 Well (Farm) No. 2 Serial No. \_\_\_\_\_  
 Elevation (Spirit Level) 954  
 Quadrangle HARRISVILLE S.  
 County RITCHIE District MURPHY  
 Engineer B. F. Rinehart  
 Engineer's Registration No. 648  
 File No. \_\_\_\_\_ Drawing No. 222-M-R  
 Date Oct. 23, 1939 Scale 1 in. = 400 ft.

STATE OF WEST VIRGINIA  
DEPARTMENT OF MINES  
OIL AND GAS DIVISION  
CHARLESTON

WELL LOCATION MAP  
FILE NO. RIT-432A

+ Denotes location of well on United States Topographic Maps, scale 1 to 62,500, latitude and longitude lines being represented by border lines as shown.

- Denotes one inch spaces on border line of original tracing.