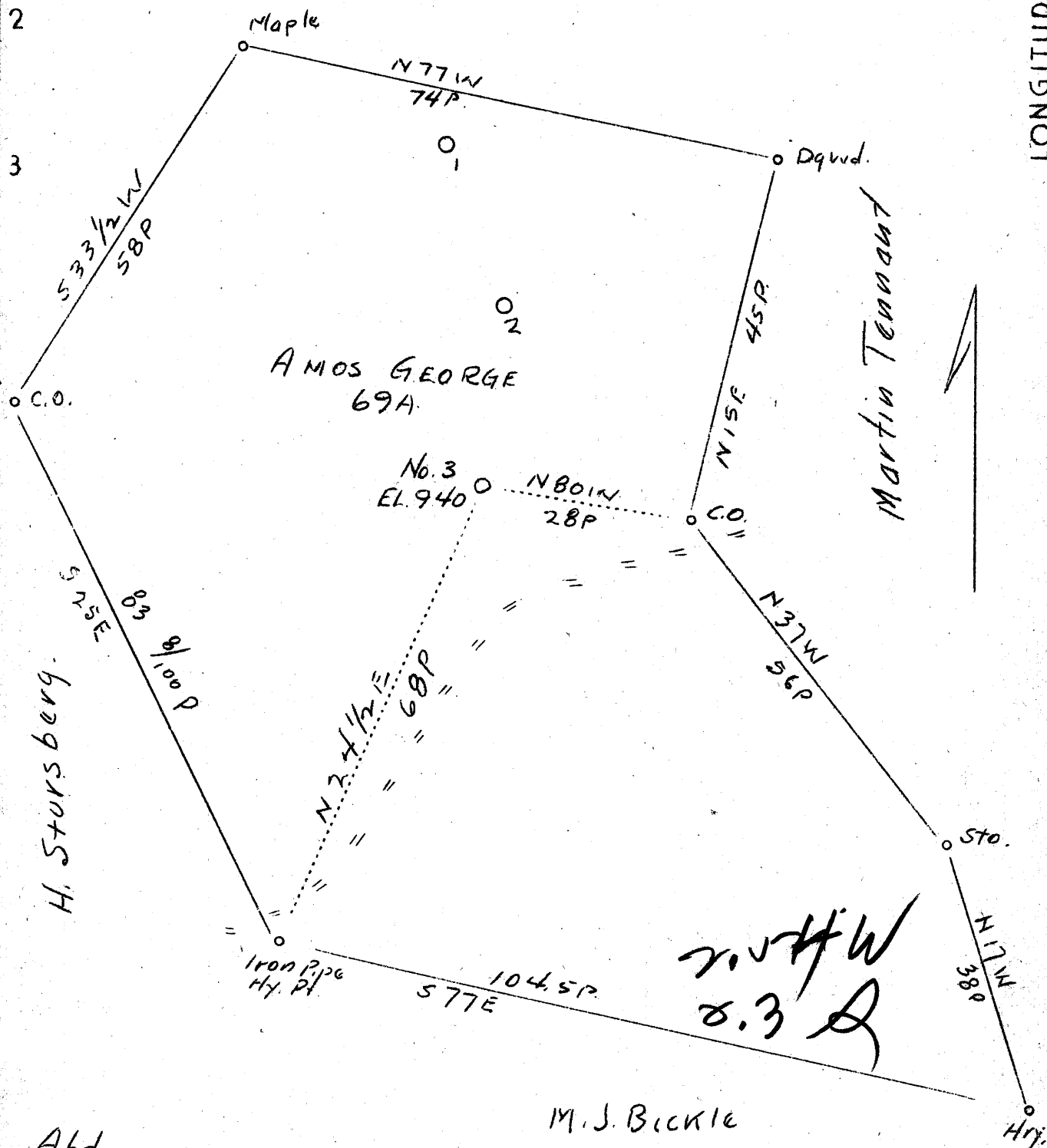


LATITUDE 39 10

LONGITUDE 81 15

John Cowan Hrs.



OCT - 9 1939

Company	Astron Oil Co.
Address	Bridgeport, W. Va.
Farm	Amos George
Tract	1
Acres	69
Well (Farm) No.	3
Elevation (SL)	940
Quadrangle	Elizabeth
County	Ritchie
District	Grant
Engineer	J. E. Anderson
Eng. Reg. No.	County Surveyor
Date	August 25, 1939
Scale	1" - 20 poles

FC

STATE OF WEST VIRGINIA
 Department of Mines
 OIL & GAS DIVISION
 Charleston

WELL LOCATION MAP
 File No. RIT-425A

x Denotes location of well on U. S. Topographic Maps, scale 1 to 62,500, latitude and longitude lines being represented by border lines as shown.

- Denotes one inch spaces on border line of original tracing.

STATE OF WEST VIRGINIA
DEPARTMENT OF MINES
OIL AND GAS DIVISION

462

WELL RECORD

Permit No. **425-A**

Oil or Gas Well **OIL**
(Kind)

Company **ASTRON OIL COMPANY**
 Address **BRIDGEPORT W. VA.**
 Farm **AMOS GEORGE** Acres **60**
 Location (waters).....
 Well No. **3** Elev. **940'**
 District **GRANT** County **RITCHIE**
 The surface of tract is owned in fee by **N.M. WELCH ET AL.**
1500 7th. STREET address **PARKERSBURG W. VA.**
 Mineral rights are owned by **N.M. WELCH ET AL.**
1500 7th. STREET address **PARKERSBURG W. VA.**
 Drilling commenced **1923**
 Drilling completed **1923**
 Date shot..... Depth of shot.....
 Open Flow /10ths Water in..... Inch
 /10ths Merc. in..... Inch
 Volume..... Cu. Ft.
 Rock Pressure..... lbs..... hrs.
 Oil..... bbls., 1st 24 hrs.
 Fresh water..... feet..... feet
 Salt water..... feet..... feet

Casing and Tubing	Used in Drilling	Left in Well	Packers
Size			
16.....			Kind of Packer.....
13.....			
10.....			Size of.....
8 1/4.....			
6 1/2.....			Depth set.....
5 3/16.....			
3.....			Perf. top.....
2.....			Perf. bottom.....
Liners Used.....			Perf. top.....
			Perf. bottom.....
CASING CEMENTED..... SIZE..... No. Ft..... Date			
COAL WAS ENCOUNTERED AT NONE FEET NONE INCHES			
..... FEET..... INCHES..... FEET..... INCHES			
..... FEET..... INCHES..... FEET..... INCHES			

Formation	Color	Hard or Soft	Top	Bottom	Oil, Gas or Water	Depth Found	Remarks
<p>This well was drilled to a depth of 1017 feet. 4 7/8" casing set on shoulder at 895' feet. Gas was found in Big Injun sand at 936 and 996. Oil was found at 1008'. There was very little of either gas or oil.</p> <p>Due to the fact that this well was drilled seventeen years ago and no log kept other than what I have given it is impossible for me to give any other record. We are keeping records on our recent and present drillings so in the future we can comply with the well record forms.</p>							

