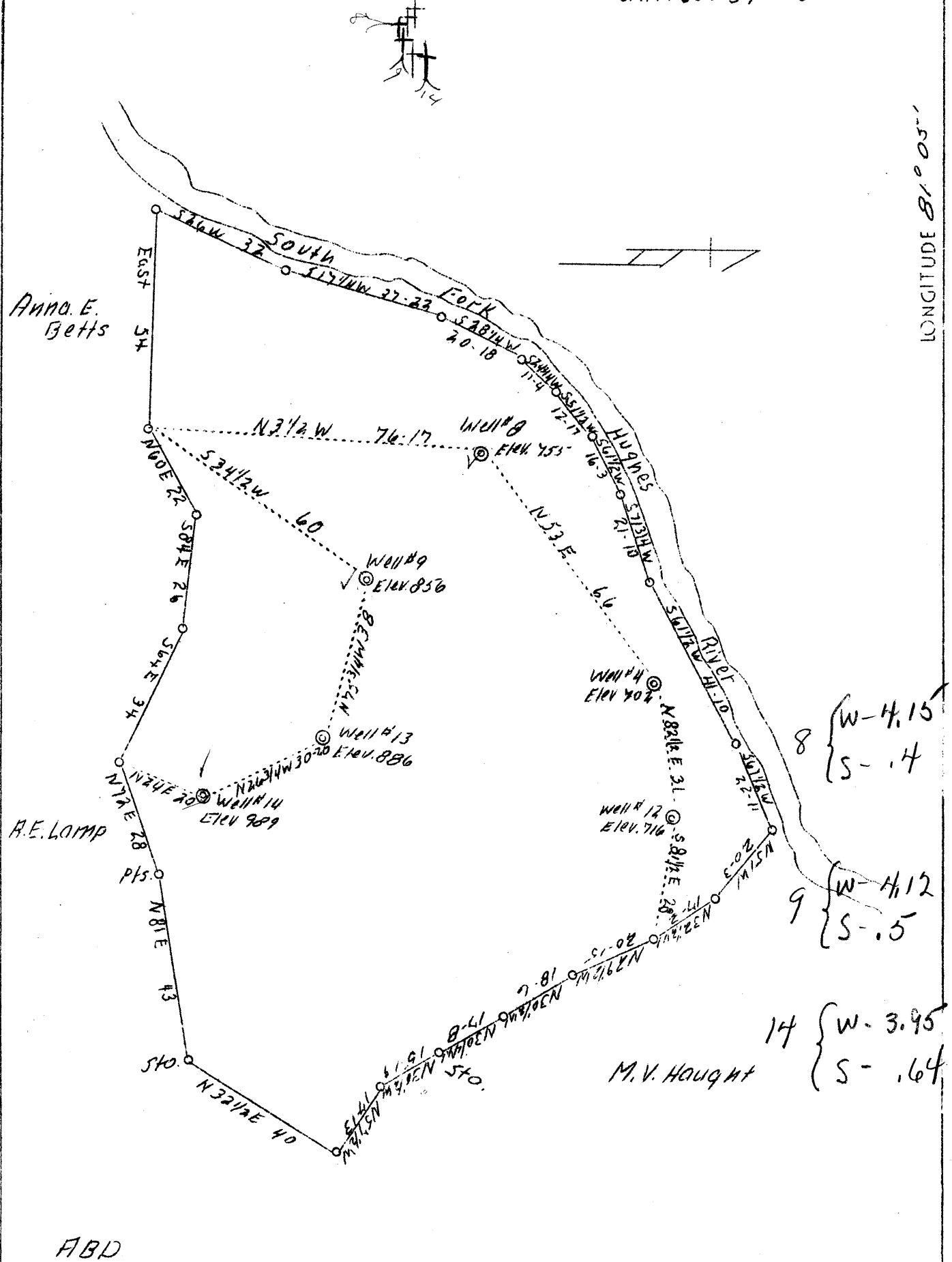


LATITUDE 39° 05'

LONGITUDE 81° 05'



ABD

Company W. R. Baker  
 Address Beatrice, W. Va.  
 Farm A. E. Lamp  
 Acres 169  
 Well (Farm) No. 4-8-9-12-13-14  
 Elevation (SL) #4-702, #8-755, #9-856,  
 #12-716, #13-886, #14-989  
 Quadrangle Harrisville S  
 County Ritchie  
 District Murphy  
 Engineer A. K. Westfall  
 Eng. Reg. No. Deputy County Surveyor  
 Date Sept. 5, 1939  
 Scale 1" - 30 poles

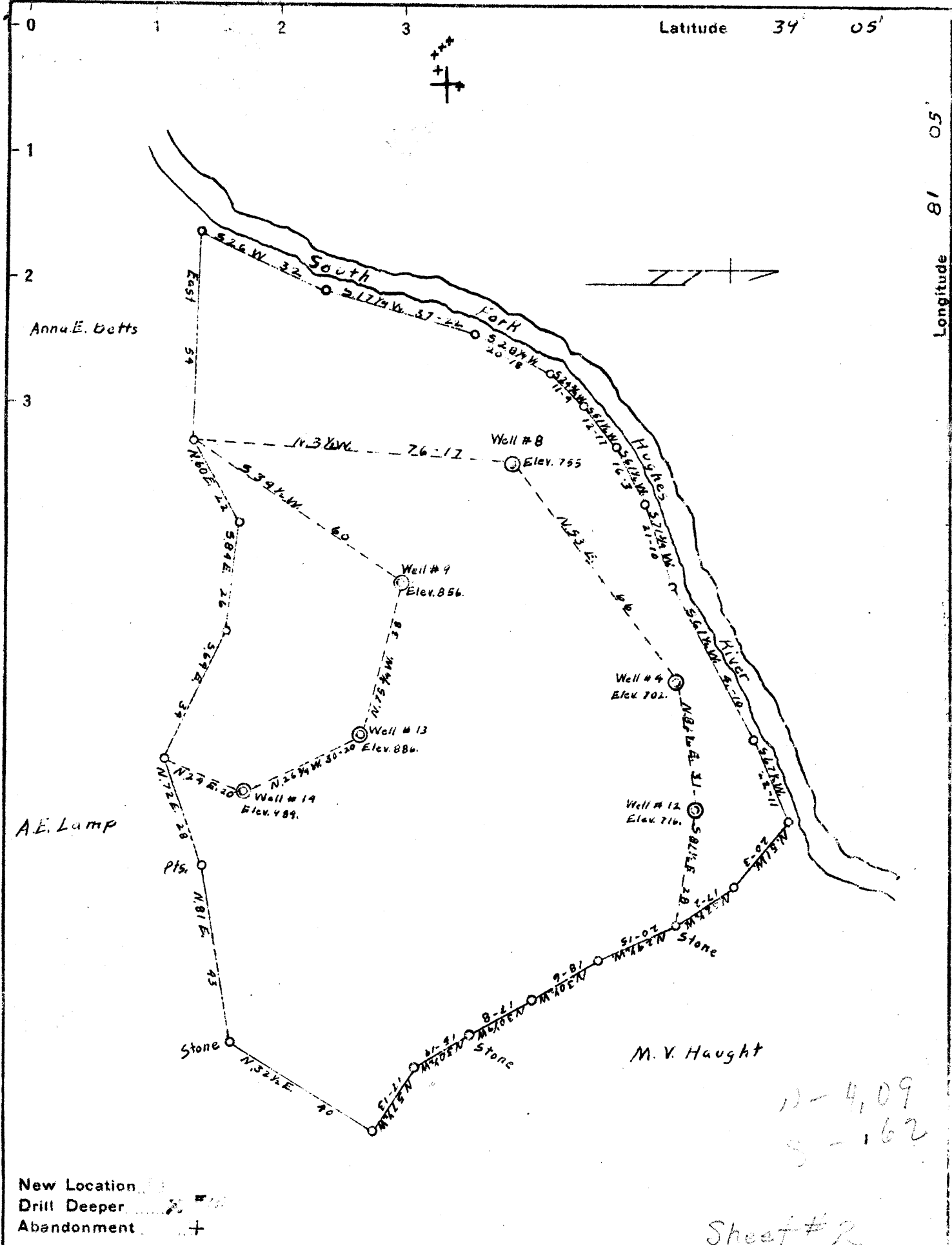
STATE OF WEST VIRGINIA  
 Department of Mines  
 OIL & GAS DIVISION  
 Charleston

WELL LOCATION MAP

File No. Rit 421-422-423-A  
Well # 8-9-14

x Denotes location of well on U. S. Topographic Maps, scale 1 to 62,500, latitude and longitude lines being represented by border lines as shown.

- Denotes one inch spaces on border line of original tracing.



New Location   
 Drill Deeper   
 Abandonment

11-4,09  
 8-162  
 Sheet # 2

Company W.R. Baker  
 Address Beatrice W.V.  
 Farm A.E. Lamp  
 Tract \_\_\_\_\_ Acres 169 Lease No. \_\_\_\_\_  
 Well (Farm) No. 4-8-9-12-13-14 Serial No. \_\_\_\_\_  
 Elevation (Spirit Level) #9-702, #8-755, #9-856, #12-716, #13-886, #14-989  
 Quadrangle Harrisville S  
 County Hitchcock District Murphy  
 Engineer W.T. Newfield  
 Engineer's Registration No. Deputy County Surveyor  
 File No. \_\_\_\_\_ Drawing No. \_\_\_\_\_  
 Date Sept. 5, 1908 Scale 1" = 50 Feet

STATE OF WEST VIRGINIA  
 DEPARTMENT OF MINES  
 OIL AND GAS DIVISION  
 CHARLESTON

WELL LOCATION MAP  
 FILE NO. RIT-421-422-423-A

~~RIT-833~~  
 WELL  
 + Denotes location of well on United States Topographic Maps, scale 1 to 62,500, latitude and longitude lines being represented by border lines as shown.  
 - Denotes one inch spaces on border line of original tracing.