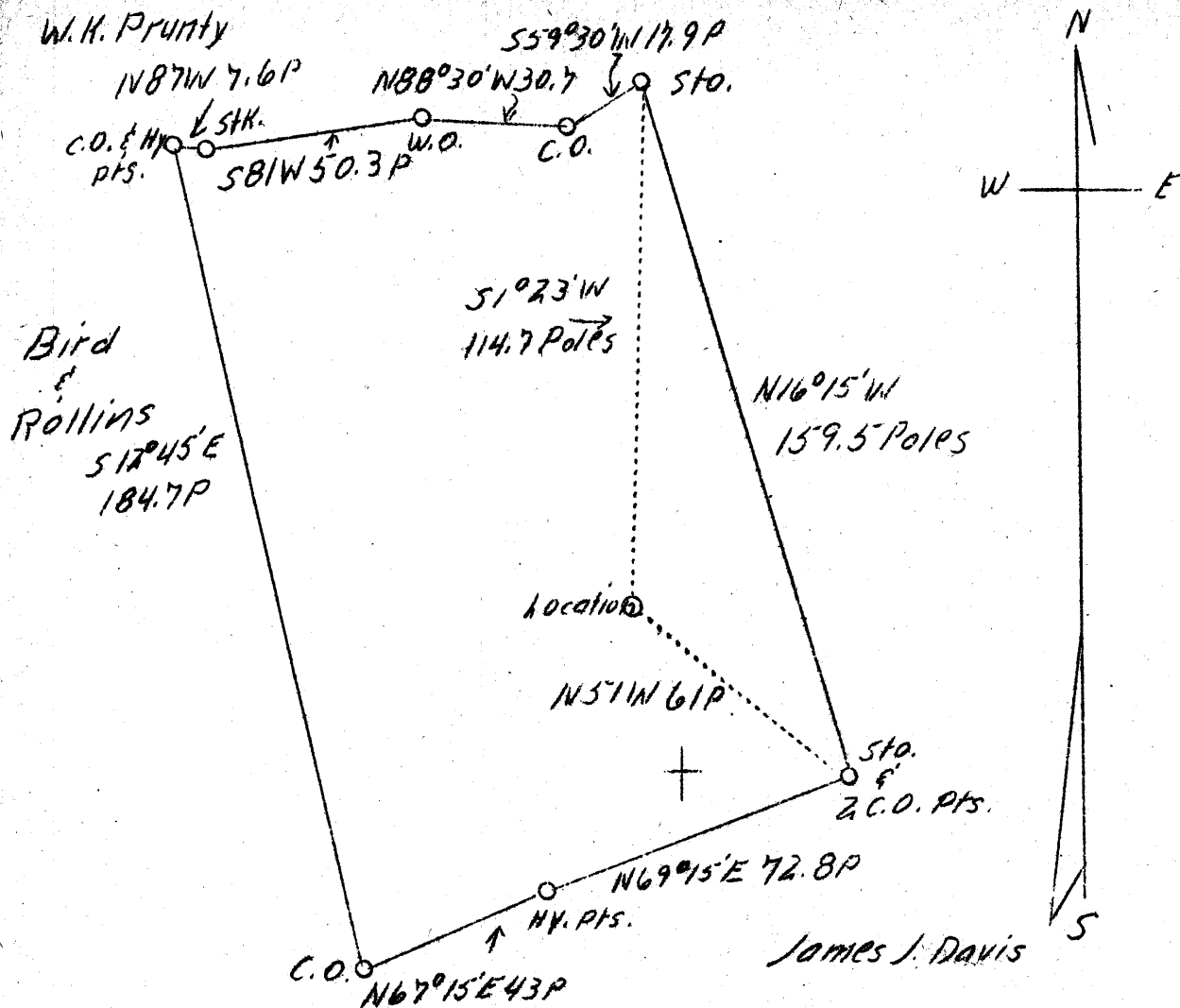


LATITUDE 39° 10'

LONGITUDE 80° 53'



3.32 W
4.51 A

ABD.

SEP 27 1939

Company	Spruce Oil & Gas Co.
Address	Jane Lew, W. Va.
Farm	Prudence E. Wilson
Acres	115-53/160
Lease No.	1
Well (Farm) No.	2
Serial No.	2
Elevation (SL)	935
Quadrangle	Holbrook
County	Ritchie
District	Murphy
Engineer	M. C. B. Linger
Eng. Reg. No.	261
Date	August 17, 1939
Scale	1" = 40 poles

WC

STATE OF WEST VIRGINIA
 Department of Mines
 OIL & GAS DIVISION
 Charleston

WELL LOCATION MAP

File No. Rit-417-A

x Denotes location of well on U. S. Topographic Maps, scale 1 to 62,500, latitude and longitude lines being represented by border lines as shown.

- Denotes one inch spaces on border lines of original tracing.

WEST VIRGINIA DEPARTMENT OF MINES
OIL AND GAS DIVISION

470

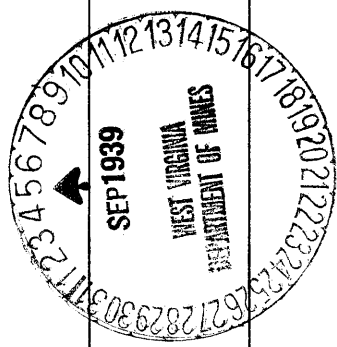
WELL RECORD

AB 417-A
Permit No.

Oil or Gas Well Gas
(Kind)

Company..... Spruce Oil & Gas Co.	Casing and Tubing	Used in Drilling	Left in Well	Packers
Address..... Jane Lew, W. Va.	Size			
Farm Prudence E. Wilson Acres 115-53/160	16.....			Kind of Packer.....
Location (waters).....	13.....			
Well No. 2 Elev. 935	10.....			Size of.....
District Murphy County Ritchie	8 1/4.....	800 ft.		Depth set.....
The surface of tract is owned in fee by W. H. Davis	6 5/8.....			
Address Prunty, W. Va.	5 3/16.....			
Mineral rights are owned by Prudence E. Wilson and others	3.....			Perf. top.....
Address Harrisville, W. Va.	2.....			Perf. bottom.....
Drilling commenced October, 1923	Liners Used.....			Perf. top.....
Drilling completed October, 1923				Perf. bottom.....
Date shot Oct. 20-21, 1923 Depth of shot.....				
Open Flow /10ths Water in..... Inch				
/10ths Merc. in..... Inch				
Volume..... Cu. Ft.	CASING CEMENTED.....	SIZE.....	No. FT.....	Date.....
Rock Pressure..... lbs..... hrs.				
Oil..... bbls., 1st 24 hrs.	COAL WAS ENCOUNTERED AT.....	FEET.....	INCHES.....	
Fresh water..... feet..... feet		FEET.....	INCHES.....	
Salt water..... feet..... feet		FEET.....	INCHES.....	

Formation	Color	Hard or Soft	Top	Bottom	Oil Gas or Water	Depth Found	Remarks
The following is all the data we have been able to find relative to this well:							
<u>October 20, 1923</u> 10 quarts							
							1 - 3 1/2 10- qu. shell
							7 ft. anchor
Sand	- - - - -	- - - - -	1775 ft.	1850 ft.			
Shot	- - - - -	- - - - -	1799 "	1804 "			
<u>October 21, 1923</u> 30 quarts							
							1 - 5 1/2" 30-Quart shell
							4 ft. anchor
Sand			1595 "	1640 "			
Shot			1619 1/2 "	1625 "			



Formation	Color	Hard or Soft	Top	Bottom	Oil, Gas or Water	Depth Found	Remarks

Date August 16 - - - -, 1939

APPROVED Spruce Oil & Gas Co., Owner

By..... President
(Title)