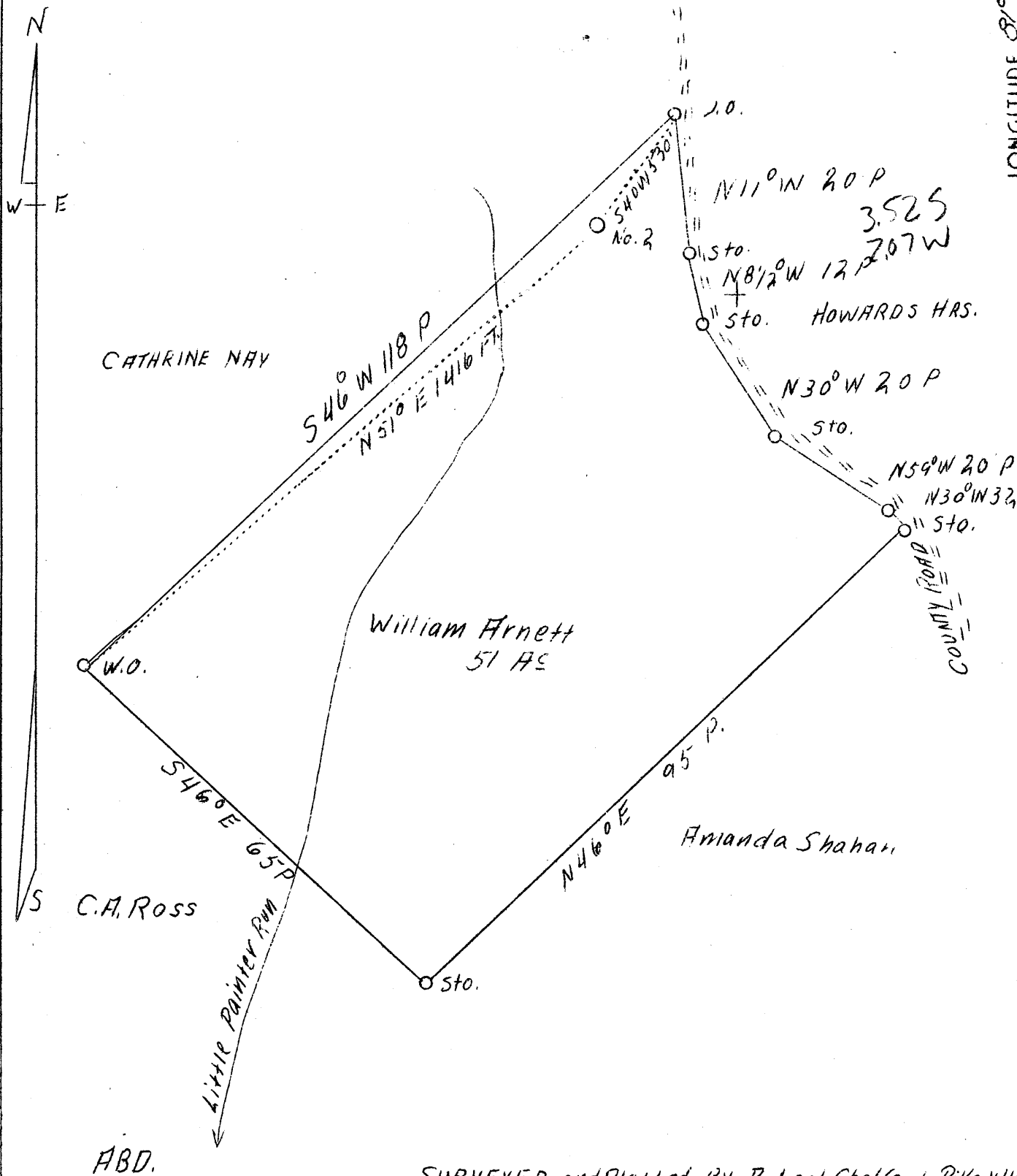


LATITUDE 39° 20'

LONGITUDE 81° 05'



SURVEYED and Platted BY Robert Chalfant Pike, W.Va.

Company	Henagan & Hanlon, Inc.
Address	Sistersville, W.Va.
Farm	William Arnett
Acres	51
Well (Farm) No.	2
El. (Sp. L)	1101.5
Quadrangle	St. Mary's
County	Ritchie
District	Grant
Eng.	J. V. Dunbar
Eng. Reg. No.	65
File No.	C 23 - L
Date	4/3/39
Scale	1" - 20 Rds.

STATE OF WEST VIRGINIA
 Department of Mines
 OIL AND GAS DIVISION
 Charleston

WELL LOCATION MAP

File No. Rit-392-A'

x Denotes location of well on U.S. Topographic Maps, scale 1 to 62,500, latitude and longitude lines being represented by border lines as shown

- Denotes one inch spaces on border line of original tracing.