

LATITUDE 39° 05'

39° 07' 30" (7/16)

1+  
2+  
3+  
9+

LONGITUDE 81° 15'

W.A. LEWIS

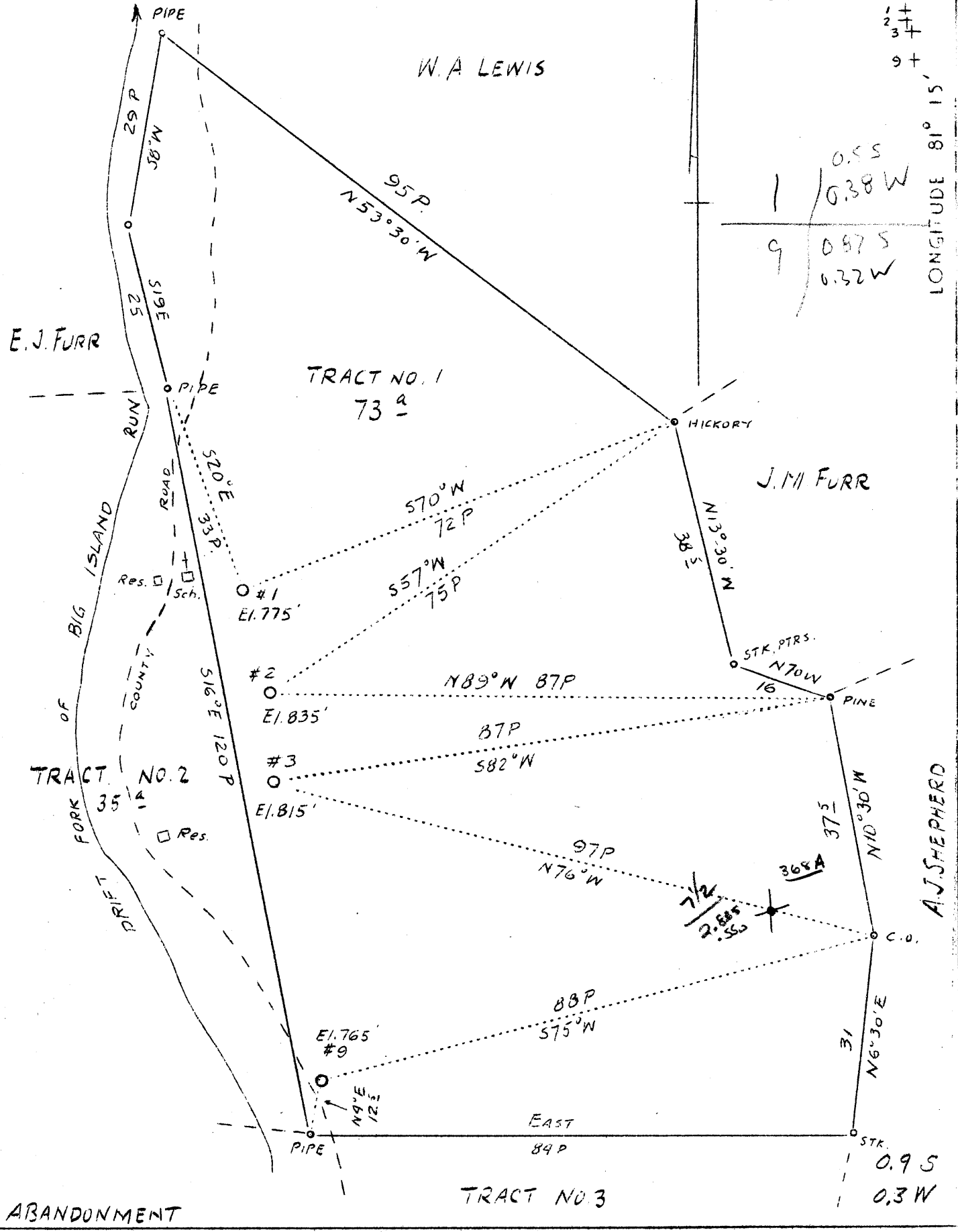
J.M. FURR

A.J. SHEPHERD

TRACT NO. 1  
73 a

TRACT NO. 2

TRACT NO. 3



ABANDONMENT

Company Smith, Feisk & Pierson  
 Address V. Ker, R.D. No. 2 I.V.  
 Firm First Citizens Bank of  
 Pennington E. A. Rinehart  
 Rec.  
 Tract 1 Acres 73  
 Well (Farm) Nos. 1, 2, 3  
 Elevation (Spirit Level) #1-775;  
 No 2-835; #3-815  
 Quadrangle Elizabeth  
 County Ritchie  
 District Murphy  
 Engineer J. E. & Robt. Anderson  
 Engineer's Registration No. 296  
 Date July 17, 1937  
 Scale Lin--20p

STATE OF WEST VIRGINIA  
 Department of Mines  
 OIL AND GAS DIVISION  
 Charleston

WELL LOCATION MAP

File No. RIT- 367 - WELL #1-A  
308 - " 4 A  
370 - " 9 A

x Denotes location of well on United States Topographic Map, scale 1 to 62,500, latitude and longitude lines being represented by border lines as shown.  
 - Denotes one inch spaces on border line of original tracing.

RECEIVED  
AUG 29 1938  
GENERAL INVESTIGATIVE  
DIVISION