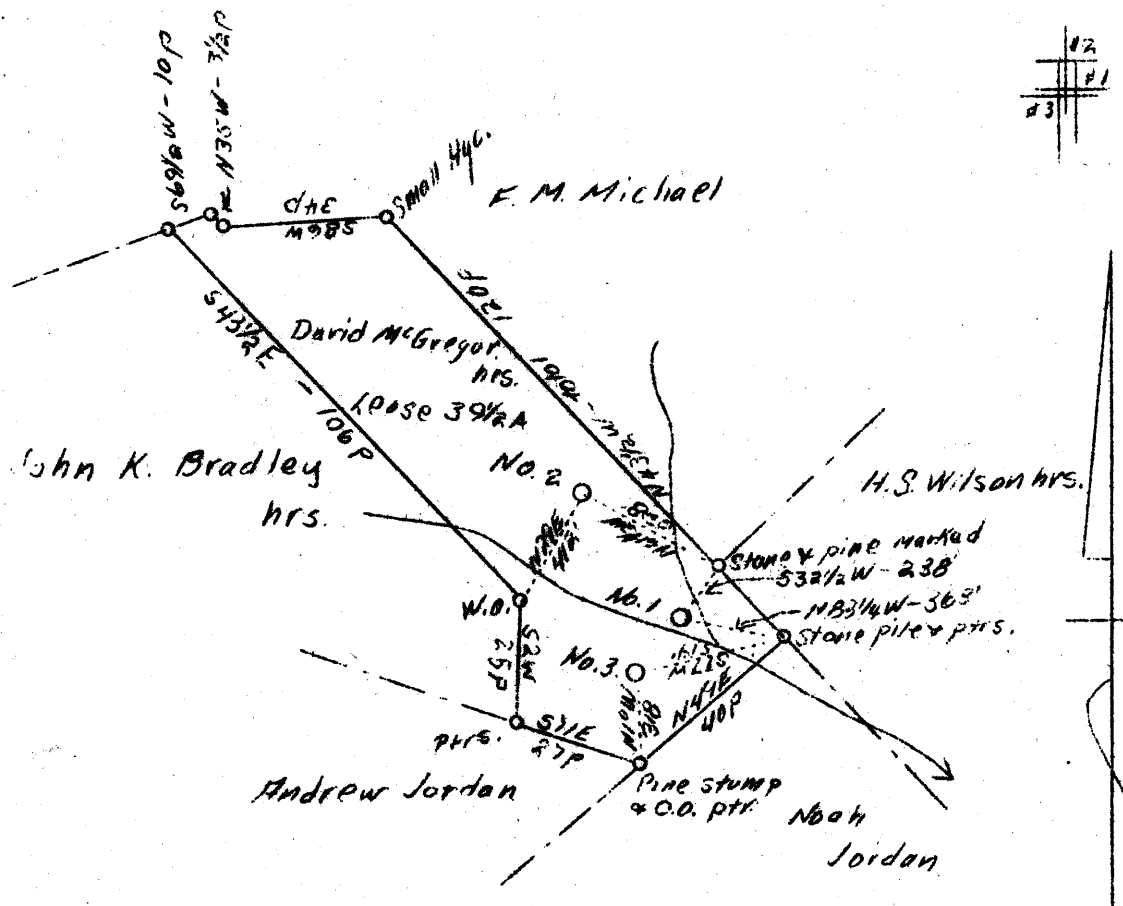


LONGITUDE 81° 10'



✓ #1	(859)	1.43 W	3.1
✓ #2	(1019)	1.48 W	2.94
✓ #3	(1001)	1.52 W	3.12

ABD.

AUG - 9 1938

Company Mason & Mason
 Address Cairo, W. Va.
 Farm David McGregor, Hrs.
 Acres 39-1/2
 Well (Farm) Nos. 1, 2 and 3
 Elevation (S.P.) #1-859; #2-1019; #3-1001
 Quadrangle Harrisville
 County Ritchie
 District Murphy
 Engineer O. N. Barnhart
 Eng. Reg. No. Surveyor
 Date July 23, 1938
 Scale 1" = 40 poles

(WV)

STATE OF WEST VIRGINIA
 Department of Mines
 OIL & GAS DIVISION
 Charleston

WELL LOCATION MAP
 File No. Pic-362-363-364-H

X Denotes location of well on U. S. Topographic Maps, scale 1 to 62,500, latitude and longitude lines being represented by border lines as shown.

+ Denotes one inch spaces on border line of original tracing.

Murphy District, Ritchie County, W. Va.

By Mason & Mason, Cairo, W. Va.

On 39 acres, on Macfarlan Run.

Elevation, 1001.0' L.

Minerals owned by Mason & Mason, Cairo, W. Va.

Drilling completed, December, 1927.

Fresh water at 145' and 370'.

13" casing, 12'; 10", 392' (pulled); 8", 1090';

6", 490'; above 490' of 6" casing used as a liner.

Oil and gas well. Abandonment reported to Dept. of Mines (not dated).

Record to RCT from Mrs. Griffith August 12, 1938.

	Top.	Bottom.
Big Red	780	- 860
Little Dunkard Sand	930	- 1010
Pink.....	1055	- 1090
White slate	1090	- 1115
Gobal rock	1115	- 1132
Long streak?	1433	- 1510
Gas Sand	1560	- 1610
Stray sand	1700	- 1745
Marion Sand (oil, 1810-1817')	1770	-1857
Big Lime	1857	- 1909
Keemer Sand	1909	- 1929
Lime	1929	- 1949
Big Injun Sand (oil, 2051-2060')	1949	- 2062
Total depth		2089

Wh. Permit 264-A

WEST VIRGINIA DEPARTMENT OF MINES
OIL AND GAS DIVISION

(427)

WELL RECORD

Permit No.

Oil or Gas Well **both**
(Kind)

Company **Mason & Mason**
 Address **Cairo, W. Va.**
 Farm **Mc Greger, heirs** Acres **39 1/4**
 Location (waters) **Mac Parlan Run**
 Well No. **THREE** Elev. **1001.0**
 District **Murphy** County **Ritchie**
 The surface of tract is owned in fee by
 Address
 Mineral rights are owned by *Mason & Mason*
 Address *Cairo W. Va.*
 Drilling commenced
 Drilling completed **December, 1927**
 Date shot Depth of shot
 Open Flow /10ths Water in Inch
 /10ths Merc. in Inch
 Volume Cu. Ft.
 Rock Pressure lbs. hrs.
 Oil bbls., 1st 24 hrs.
 Fresh water **145** feet **370** feet
 Salt water feet feet

Casing and Tubing	Used in Drilling	Left in Well	Packers
Size			
16			Kind of Packer
13	12'	12'	
10	392'	Pulled	Size of
8 1/4	1090'	1090'	
6 5/8	490'	490'	Depth set
5 3/16			
3			Perf. top
2			Perf. bottom
Liners Used	Above 490' of		Perf. top
	6 5/8" casing used as		Perf. bottom
	a liner.		

CASING CEMENTED SIZE No. FT. Date
 COAL WAS ENCOUNTERED AT FEET INCHES
 FEET INCHES FEET INCHES
 FEET INCHES FEET INCHES

Formation	Color	Hard or Soft	Top	Bottom	Oil Gas or Water	Depth Found	Remarks
Big Red			780	860			
Little Dunkard			980	1010			
Pink			1055	1090			
White Slate			1090	1115			
Gebel Rock			1115	1132			
Long Streak			1433	1510			
GAS SAND			1560	1610			
Stray			1700	1745			
MAXON			1770	1857	011	1810-1817	
BIG LIME			1857	1909			
KEENER			1909	1929			
Lime			1929	1949			
BIG INJUN			1949	2062	011	2051-2060	
Total Depth-----			2089				

AUG 12 1938