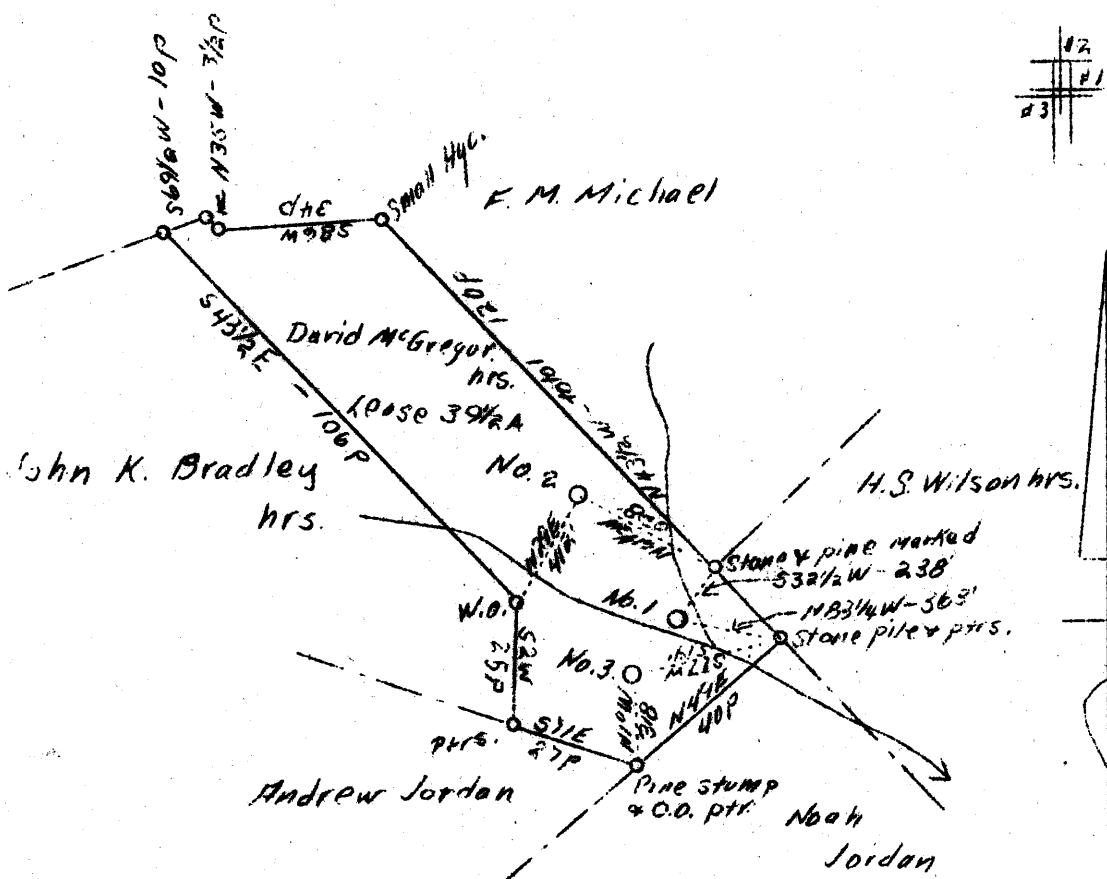


LONGITUDE 81° 10'



#1	1.43 W
(859)	3.1
#2	1.48 W
(1019)	2.94
#3	1.52 W
(1001)	3.12

ABD.

AUG - 9 1938

Company Mason & Mason
 Address Cairo, W. Va.
 Farm David McGregor, Hrs.
 Acres 39-1/2
 Well (Farm) Nos. 1, 2 and 3
 Elevation (S.P.) #1-859; #2-1019; #3-1001
 Quadrangle Harrisville
 County Ritchie
 District Murphy
 Engineer O. N. Barnhart
 Eng. Reg. No. Surveyor
 Date July 23, 1938
 Scale 1" = 40 poles

(W.C.)

STATE OF WEST VIRGINIA
 Department of Mines
 OIL & GAS DIVISION
 Charleston

WELL LOCATION MAP
 File No. Pic-362-363-364-H

X Denotes location of well on U. S. Topographic Maps, scale 1 to 62,500, latitude and longitude lines being represented by border lines as shown.

- Denotes one inch spaces on border line of original tracing.

Murphy District, Ritchie County, W. Va.

By Mason & Mason, Cairo, W. Va.

On 39¹/₂ acres, on Macfarlan Run.

Elevation, 859' L.

Drilling completed Dec. 17, 1926.

10" casing, 200'; 8¹/₂", 906'; 6¹/₈", 1354'; all left in.

Oil well. Abandonment reported to Dept. of Mines (not dated) (1938).

Record to ROT from Mrs. Griffith August 12, 1938.

"This is the only record available".

	Top.	Bottom.
Top of Salt Sand (show of oil, 1803'; good oil, 1709-1716')		
Total depth	1663 - 1718

W. H. Smith 1937

WEST VIRGINIA DEPARTMENT OF MINES
OIL AND GAS DIVISION

425

WELL RECORD

Permit No.

Oil or Gas Well **OIL**
(Kind)

Company **Mason & Mason**
 Address **Cairo, W. Va.**
 Owner **Mr. Greger, heirs** Acres **39 1/2**
 Location (waters) **Mac Farlan Run**
 Well No. **ONE** Elev. **859**
 District **Murphy** County **Ritchie**
 The surface of tract is owned in fee by
 Address
 Mineral rights are owned by
 Address
 Drilling commenced
 Drilling completed **Dec. 17th, 1926**
 Date shot.....Depth of shot.....
 Open Flow /10ths Water in.....Inch
 /10ths Merc. in.....Inch
 Volume.....Cu. Ft.
 Rock Pressure.....lbs.....hrs.
 Oil.....bbls., 1st 24 hrs.
 Fresh water.....feet.....feet
 Salt water.....feet.....feet

Casing and Tubing	Used in Drilling	Left in Well	Packers
Size			Kind of Packer.....
16.....			
13.....			
10.....	200'	200'	Size of.....
8 1/4.....	906'	906'	
6 5/8.....	1354'	1354'	Depth set.....
5 3/16.....			
3.....			Perf. top.....
2.....			Perf. bottom.....
Liners Used.....			Perf. top.....
			Perf. bottom.....

CASING CEMENTED.....SIZE.....No. FT.....Date
 COAL WAS ENCOUNTERED AT.....FEET.....INCHES
 FEET.....INCHES.....FEET.....INCHES
 FEET.....INCHES.....FEET.....INCHES

Formation	Color	Hard or Soft	Top	Bottom	Oil Gas or Water	Depth Found	Remarks
Top of Salt Sand			1663				
		Show of oil			1703		
		Good Oil		1709 to 1716			
		Total Depth-----				1718.	
<u>This is the only record available</u>							

AUG 12 1938