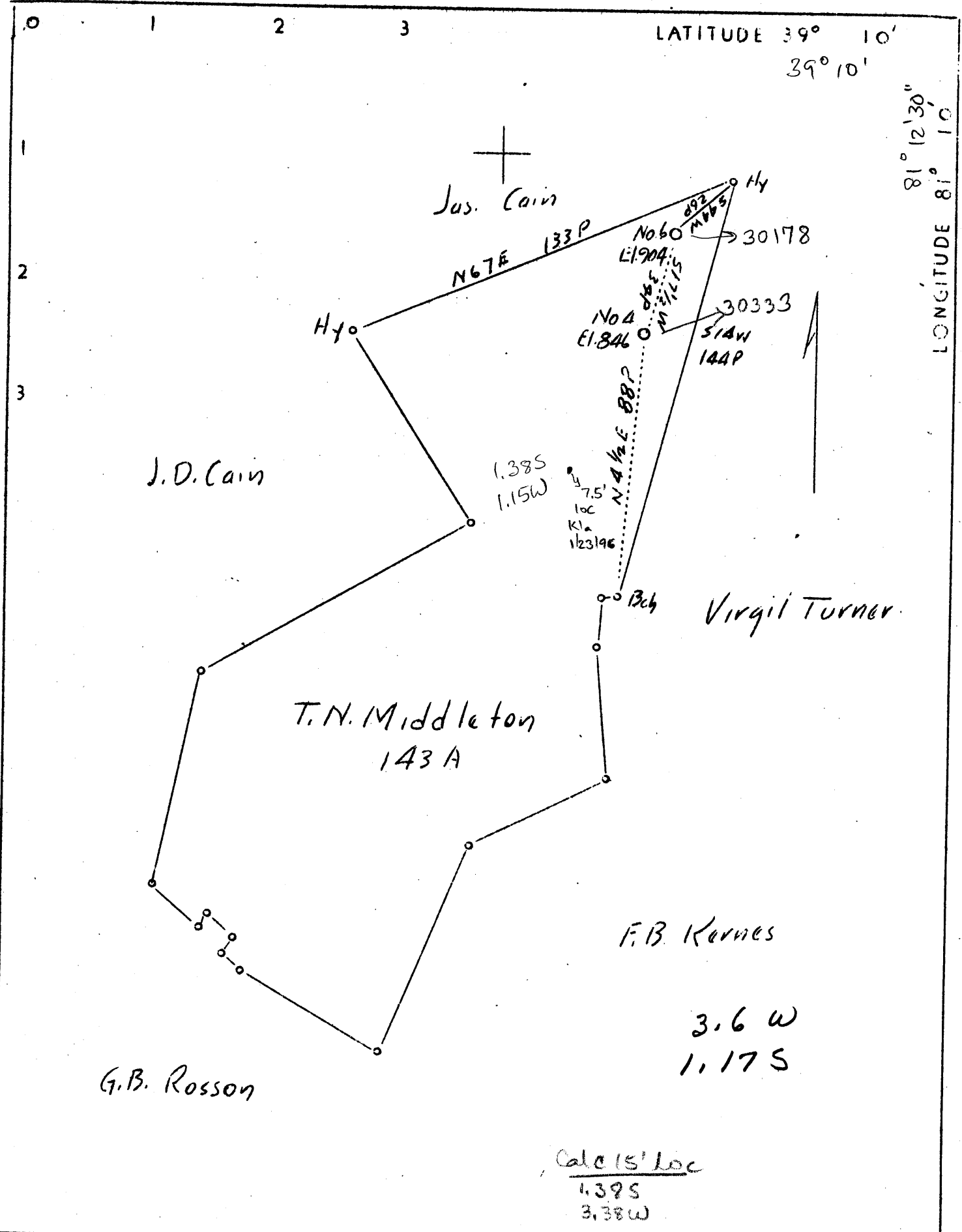


LATITUDE 39° 10'

39° 10'

LONGITUDE 81° 10' 30"



Calc 15' Loc
 4.395
 3.38W

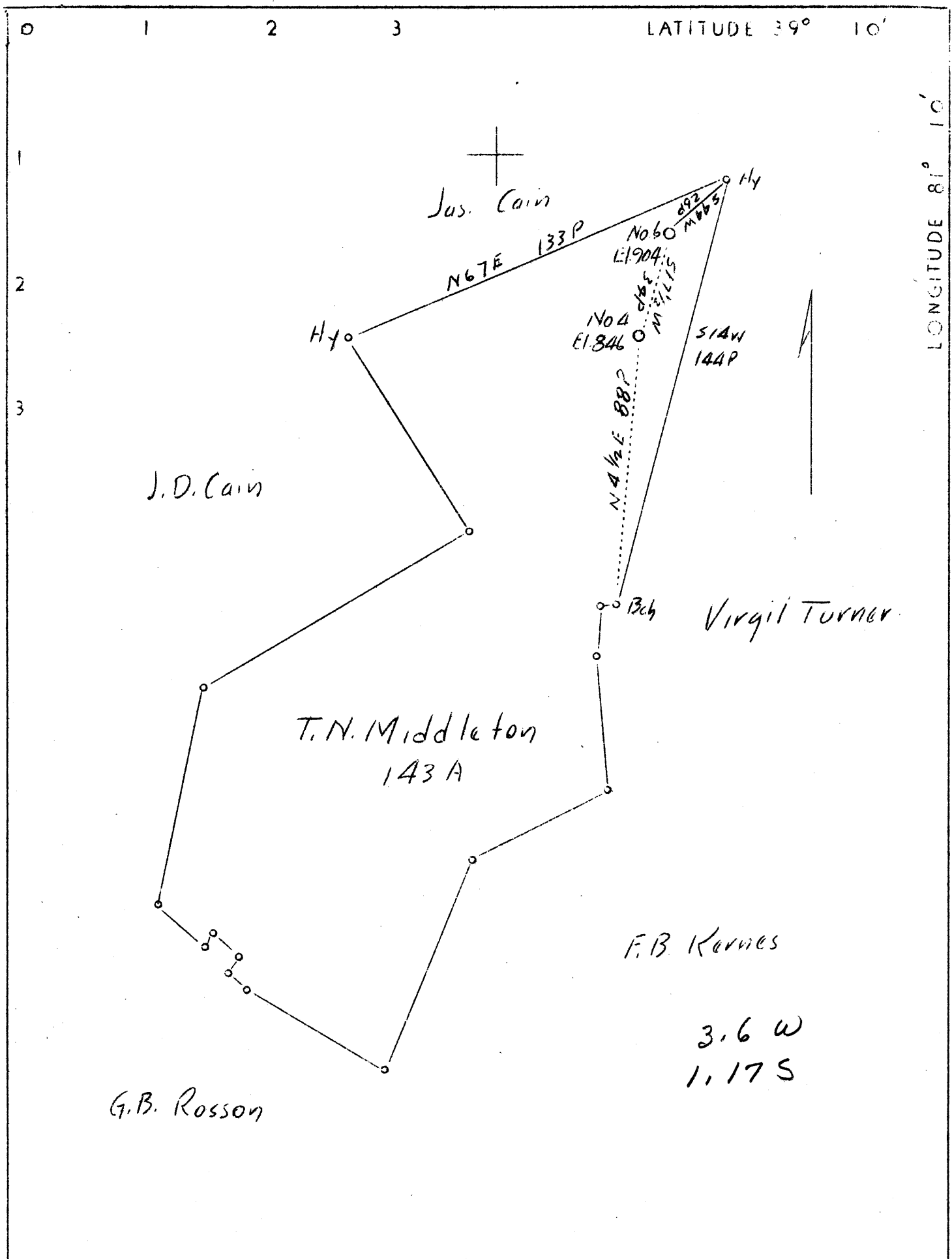
Company	Nollom Oil & Gas Corp.
Address	Pittsburgh, Pa.
Farm	T.N.Middleton
Tract	Acres 143 Lease No.
Well (Farm) No.	4 Serial No.
Elevation (Spirit Level)	846'
Quadrangle	Harrisville WC / Cairns
County	Ritchie District Grant
Engineer	A.K.Westfall
Engineer's Registration No.	Surveyor
File No.	Drawing No.
Date	11/16/37 Scale 1"-40 P.

STATE OF WEST VIRGINIA
 Department of Mines
 OIL AND GAS DIVISION
 CHARLESTON

WELL LOCATION MAP
 File No. RIT-333A

7.5' + Denotes location of well on United States Topographic Maps, scale 1 to 62,500, latitude and longitude lines being represented by border lines as shown.

— Denotes one inch spaces on border line of original tracing.



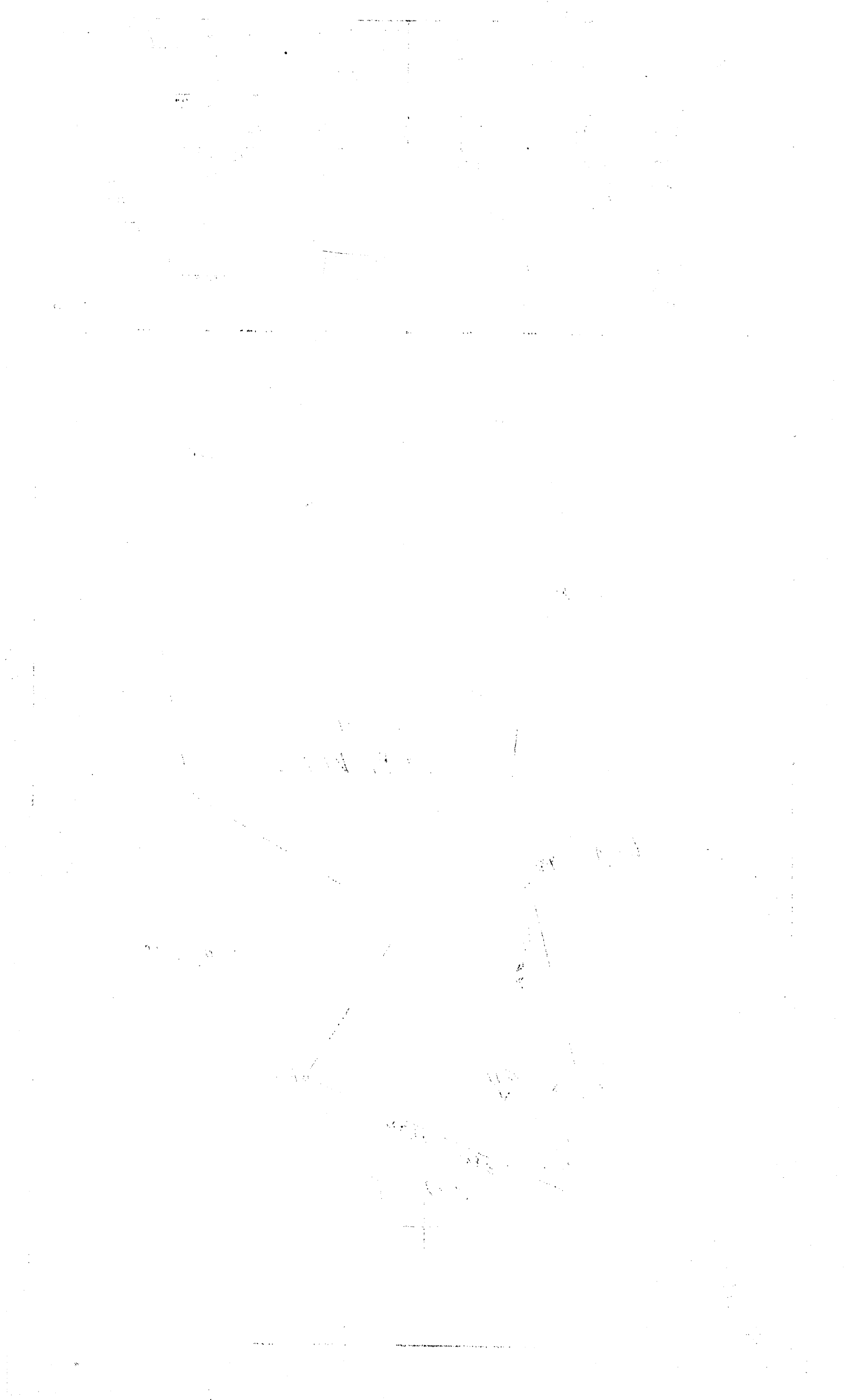
Company	Nollem Oil & Gas Corp.
Address	Pittsburgh, Pa.
Farm	T.N.Middleton
Tract	Acres 143 Lease No.
Well (Farm) No.	4 Serial No.
Elevation (Spirit Level)	846'
Quadrangle	Harrisville WC
County	Ritchie District Grant
Engineer	A.K.Westfall
Engineer's Registration No.	Surveyor
File No.	Drawing No.
Date	11/16/37 Scale 1"-40 P.

STATE OF WEST VIRGINIA
 Department of Mines
 OIL AND GAS DIVISION
 CHARLESTON

WELL LOCATION MAP
 File No. RIT-333A

+ Denotes location of well on United States Topographic Maps, scale 1 to 62,500, latitude and longitude lines being represented by border lines as shown.

— Denotes one inch spaces on border line of original tracing.



WELL RECORD

Permit No. *333 A* Oil or Gas Well (L.M.S.) No. *012*

Company *NORMAN OIL & GAS CORPORATION*
 Address *211 Oliver Bldg., Pittsburgh, Pa.*
 Farm *CONTRA* Acres *176*
 Location (waters) *4*
 Well No. *4* Elev. *116*
 District *GRAND* County *ILLICUMBI*
 The surface of tract is owned in fee by *Address*
 Mineral rights are owned by *Address*
 Drilling commenced *12/7/25*
 Drilling completed *1/1/26*
 Date shut in *January 1, 1926* Depth of shot *525 1/2* ft.
 Open Flow *100 lbs Water in* inch
100 lbs Merc. in inch

Volume *On. Ft.*
 Rock Pressure *lbs.*
 Oil *hrs.*
 Fresh water *bbls., 1st 24 hrs.*
 Salt water *feet*
feet

CASING CEMENTED *SIZE* No. FT. *Date*

COAL WAS ENCOUNTERED AT *FEET* *INCHES*

FEET *INCHES* *FEET* *INCHES*

Formation	Color	Hard or Soft	Top	Bottom	Oil Gas or Water	Depth Found	Remarks
Conductor							
Blk. Red			610	660	297'		
Goble			840	806			
Slate	black		905	875	6'4"		
Slate & Shells			905	1085			
Sand			1085	1105			
Little Gas			1100	1105	Little Gas	1100	
Brak sand			1105	1175			
Slate			1175	1200			
Gas Sand			1200	1245			
Gas			1245	1300	gas		
Steel line near			1300	1313		1313	
Slate			1300	1370			
Salt Sand			1400	1400	1415		
Break Sand			1400	1450			
Sand			1450	1579			
Gas			1450	1579	1455 gas		
Oil			1455	1536			
TOTAL DEPTH			1526	1539			

5 inch hole drilled to 1539.
6 1/2 casing set on well packers at 1415